



# Table of Contents

<b>1. Double Loop Stents.....</b>	<b>5</b>
Double Loop Stent Short Term.....	6
Double Loop Stent Long Term.....	6
Double Loop Stent Multilength.....	6
Double Loop Stent Double Girth.....	7
Double Loop Stent with string.....	7
<b>2. Ureteric Catheters.....</b>	<b>10</b>
Soft Ureteric Catheter.....	11
Semi Soft Ureteric Catheter.....	11
Firm Ureteric Catheter.....	11
<b>3. Ureteral Stone Basket.....</b>	<b>12</b>
Nitinol Ureteral Stone Basket.....	13
Stainless Ureteral Stone Basket.....	13
<b>4. Ureteral Access Sheath.....</b>	<b>14</b>
<b>5. Ureteric Sequential Dilators.....</b>	<b>15</b>
<b>6. Ureteric Balloon Dilator.....</b>	<b>16</b>
<b>7. Nephrostomy Catheters</b>	<b>18</b>
Nephrostomy Catheters Malecot.....	18
Nephrostomy Catheters J type.....	18
Nephrostomy Catheters One Step.....	20
Nephrostomy Catheter with Lock.....	21
Nephrostomy Catheters Re Entry.....	21
<b>8. Nephrostomy Fascial Dilator.....</b>	<b>23</b>
<b>9. Nephrocutaneous Dilator Set.....</b>	<b>24</b>
<b>10. Nephrocutaneous Balloon Dilator.....</b>	<b>27</b>
<b>11. Supra-pubic Catheter.....</b>	<b>29</b>
Supra-pubic Catheter with metal Cannula....	30
Supra-pubic Catheter with plastic Cannula...	31
<b>12. Urethral Balloon Catheter.....</b>	<b>33</b>
Latex Silicon Coated Foley Catheter.....	33
Total Silicon Foley Catheter.....	33
<b>13. Urodynamic Catheters.....</b>	<b>34</b>
Urodynamic Catheter Single Lumen Rectal...	35
Urodynamic Catheter Double Lumen Rectal & Cystometry.....	35
Urodynamic Catheter Triplr Lumen Profilometry.....	35
<b>14. Biopsy Needles.....</b>	<b>36</b>
Automatic Biopsy Needle.....	37
SemiAutomatic Biopsy Needle.....	38
<b>15. Puncture and Chiba Needle.....</b>	<b>39</b>
<b>16. Bladder and Prostatic Injection Needle.....</b>	<b>40</b>
<b>17. Guide Wires.....</b>	<b>42</b>
<b>18. Endoscopic Infusion Set.....</b>	<b>43</b>
<b>19. Nelaton Catheters.....</b>	<b>44</b>
<b>20. Accessories.....</b>	<b>45</b>
<b>Adult Metal Dilator(MD-A).....</b>	<b>45</b>
<b>Pediatric Metal Dilator(MD-P).....</b>	<b>45</b>
<b>Erdoscopy Channel Plug.....</b>	<b>45</b>
<b>Urethral Catheter Plug.....</b>	<b>45</b>
<b>Catheter Plug with Valve.....</b>	<b>45</b>
<b>Three way stopcock.....</b>	<b>45</b>
<b>21. Ordering Information.....</b>	<b>46</b>

# Double Loop Stents



## Double Loop Stents

For temporary internal drainage from the renal pelvis to the bladder.

### Features and Properties

#### Stent Features:

Amecath Double Loop Stent is made of polyurethane.

- Tecoflex for short term period.
- Carbothane for long term period.

#### Advantages:

- Thermo labile material which softens inside the body minimizing the pain sensation and the sense of foreign body inside the patient.
  - Biocompatible with long standing period.
  - Cross section design feature decreases the liability to compression
  - Memory free.
- **Color coding: blue for Tecoflex and white for Carbothane.**
- **Hydrophilic coating: available option to improve stent application, decrease incident of associated infection and prolong life of the stent.**

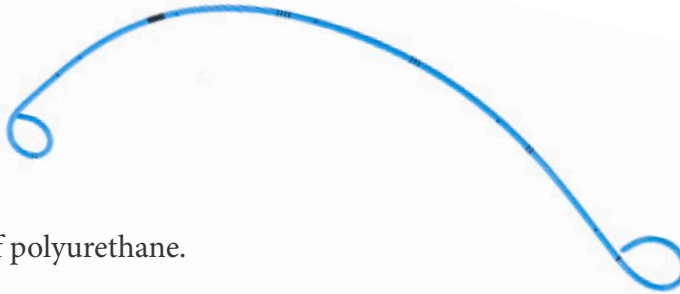
The material used in hydrophilic coating is specially designed for urinary catheters.

#### Kit Features:

Complete content that helps physician:

Double Loop Stent plus:

- Either: Simple pusher tube ( color coded according to the size) with clamp or coaxial pusher ( full application control ) for accurate positioning of the stent loop inside renal pelvis or in the bladder.
- PTFE coated stainless guide wire. Other types of wires are also available as hydrophilic coating, Nitinol wire and zebra wire.
- Endoscopy Chanel Plug (optional).



D  
O  
U  
B  
L  
E  
  
L  
O  
O  
P  
  
S  
T  
E  
N  
T  
S



D  
O  
U  
B  
L  
E  
L  
O  
O  
P  
S  
T  
E  
N  
T  
S

**Code key: DLU-XX-YY-PP-TTT-S/S-K-W-C**

DLU : Double Loop Stent.  
 XX: Size in FR  
 YY: Length in cm. MM for Multilength (24-34 cm).  
 PP: Type of pusher . (SP) for simple pusher or (CP) for coaxial pusher.  
 TTT: Type of stent and color. (STB) for short term blue or (LTW) for long term white.  
 S/S: Both end tip. (O/O) for open/open, (O/C) for open/closed or (C/C) for closed/closed.  
 K: Kit (Stent, wire and pusher) or (0) for separate Stent.  
 W: type of wire. (T) for PTFE, (H) for Hydrophilic, (N) for Nitinol or (Z) for Zebra.  
 C: Type of coating: (0) for no coating, (H) for Hydrophilic Coating.

**For Ordering information:**

*Double Loop Stent Short term see page 47.*



*Double Loop Stent Long term see page 54.*



*Double loop stent Multilength see page 59.*





### Double Girth (Tumor Stents)

It is designed to resist compression from the outside in case of surrounding malignancy. The design is made to maintain patency of the inner lumen.



**Code key:**

- DLU-6/10-YY-PP-TTT-S/S-K-W-C
- DLU-6/12-YY-PP-TTT-S/S-K-W-C
- DLU-7/12-YY-PP-TTT-S/S-K-W-C
- DLU-7/14-YY-PP-TTT-S/S-K-W-C

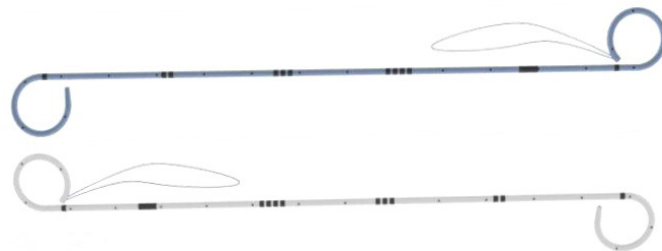
### Double Loop Stents with string

Addition of string to the distal loop may be used in some cases to avoid second need of cystoscopy to remove the stent mainly in female.

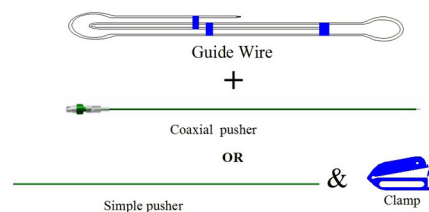
Codes:- add(s) at the end of any code.

**Kit Contains:**

- (1) Double Loop Stent.
- (1) Guide Wire.
- (1) Pusher.
- (1) Clamp.
- (1) Endoscopy Chanel Plug (optional)



**Accessories**



D  
O  
U  
B  
L  
E  
  
L  
O  
O  
P  
  
S  
T  
E  
N  
T  
S



D  
O  
U  
B  
L  
E  
L  
O  
O  
P  
S  
T  
E  
N  
T  
S

Kit Match				
Catheter		Pusher		Guide Wire 150 cm
Size	Length	Simple	Coaxial	Size
3 FR	YY	3 FR Violet		0.021"
3.6 FR	YY	3.6 FR Violet		0.021"
4FR	YY	4FR Yellow		0.028"
4.7FR	YY	5FR Red	4.8FR Green	0.028"
4.8FR	YY	5FR Red	4.8FR Green	0.028"
5FR	YY	5FR Red	6FR Green	0.035"
6FR	YY	6FR Green	6FR Green	0.035"
7FR	YY	7FR Orange	7FR Blue or Green	0.038"
8FR	YY	8FR Blue	8FR Blue	0.038"

# URETERIC CATHETERS



U  
R  
E  
T  
E  
R  
I  
C  
  
C  
  
A  
T  
H  
E  
T  
E  
R

## Ureteric Catheter

For urine drainage from the renal pelvis to outside through the urethral.

### Features and Properties

#### **Catheter Features:**

Amecath ureteric catheter contains three colors variants indicating different rigidity of the catheter shaft:

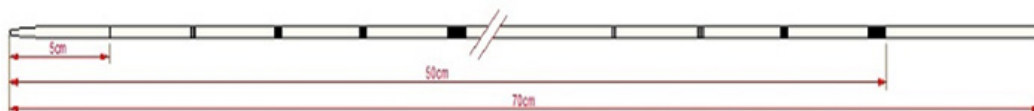
- Yellow: Soft.
- White: Semisoft.
- Blue: Firm.

#### **Amecath ureteric catheter has different tip shapes:**

- Round closed tip for direct application.
- Open tapered tip for application over guide wire.
- Cone and chevasaeu tips for contrast injection.
- Whistle tip for better drainage.
- Olive, angle and curved tips for easy insertion.

**These variations of the rigidity and the tip design, can tolerate the different clinical needs during the procedure.**

- Amecath ureteric catheter is supplied with separate catheter connector for sampling or injecting contrast/therapeutics.
- Amecath ureteric catheter is made of tecoflex which provides high compitability and less irritation.
- Amecath ureteric catheter length is 70 ±2 cm.





**Code key: UC-XX-T-S-C**

UC: Ureteric Catheter.

XX: Size in FR.

T: tip configuration: (TO) for Tapered Opened tip, (CL) for Closed Round tip, (WH) for Whistle tip, (CO) for Cone tip, (OL) for Olive tip, (CH) for Chevassu tip, (CU) for curved tip, (AO) for angel tip.

S: Stiffness: Yellow (Y) for soft, White (W) for semi soft, Blue (B) for firm.

C: Type of coating: (0) for no coating, (H) for hydrophilic coating,

**Kit Contains:**

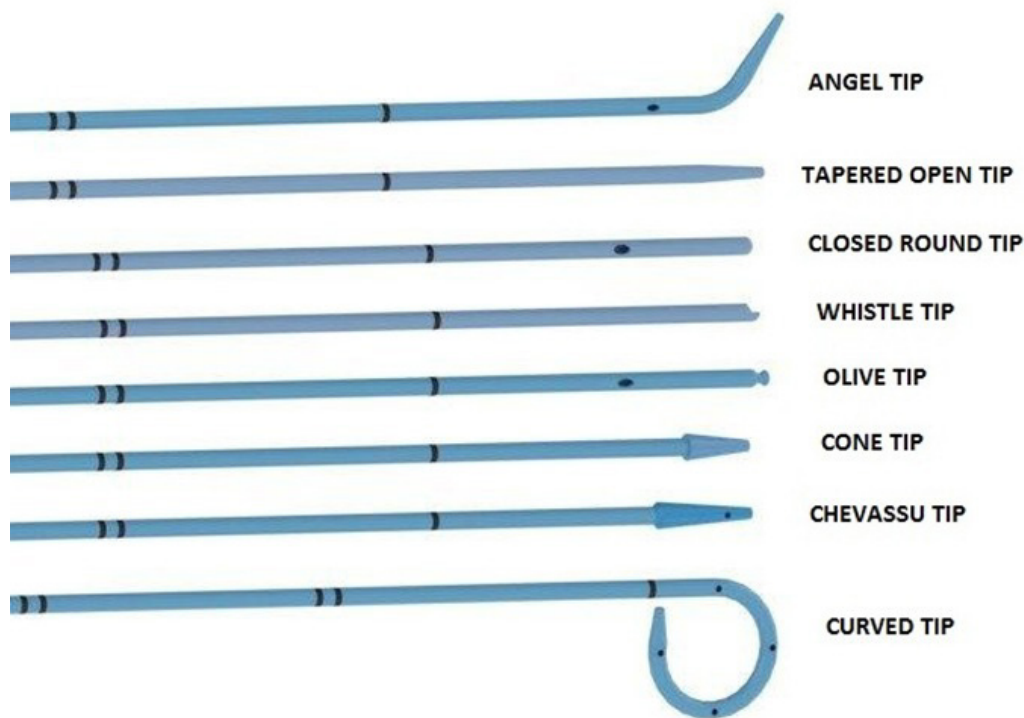
- (1) Catheter.
- (1) Catheter Connector.
- (1) Monofilament Stylet.

**For Ordering information:**

*Soft Ureteric Catheter uncoated and hydrophilic see page 60.*

*Semi-Soft Ureteric Catheter uncoated and hydrophilic see page 60.*

*Firm Ureteric Catheter uncoated and hydrophilic see page 61.*





U  
R  
E  
T  
E  
R  
A  
L  
S  
T  
O  
N  
E  
B  
A  
S  
K  
E  
T

### Ureteral Stone Basket

- For removal of stones from the Ureter or the kidney.
- Amecath Ureteral Stone Basket provides maximum patient safety, compatibility and easy to operate.

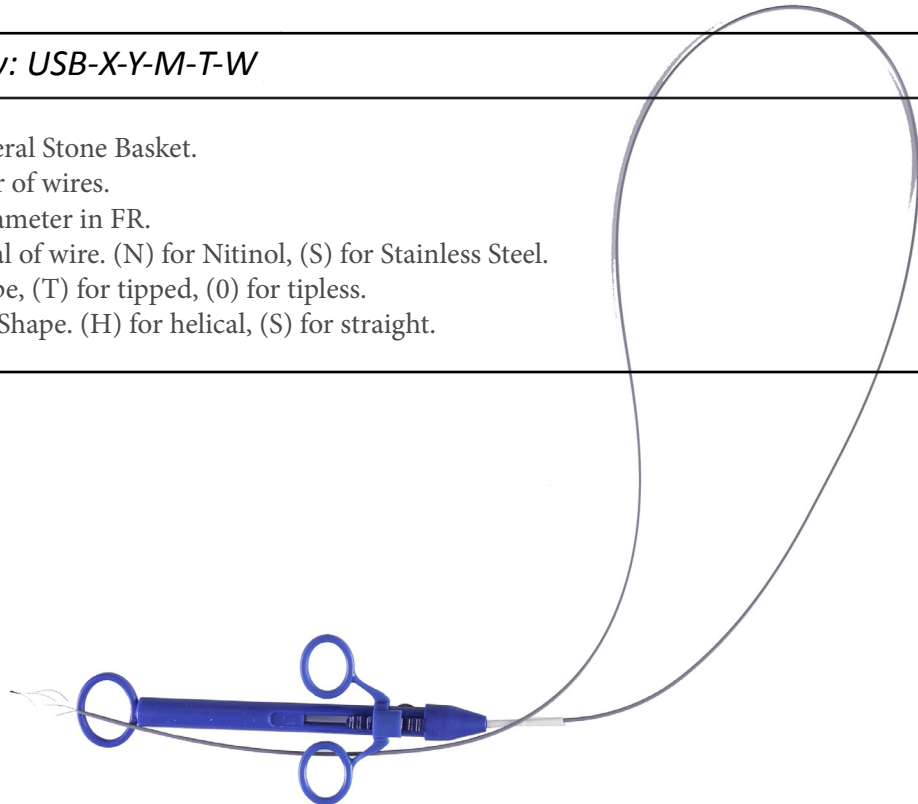
#### Features and Properties

##### Design Features:

- High opening force of the basket itself to allow easier opening of basket wires against ureteric lumen resistance.
- Rounded edges wires prevent traumatic opening of the basket inside ureteric lumen.
- Flexible tube and small sized shaft, make the introduction inside flexible ureteroscopes much easier.
- Easy controllable handle with the ability to disassemble to facilitate intracorporeal lithotripsy.

##### Code key: USB-X-Y-M-T-W

- USB: Ureteral Stone Basket.
- X: Number of wires.
- Y: Tube diameter in FR.
- M: Material of wire. (N) for Nitinol, (S) for Stainless Steel.
- T: Tip shape, (T) for tipped, (0) for tipless.
- W: Basket Shape. (H) for helical, (S) for straight.





**For Ordering information:**

*Nitinol Ureteral Stone Basket see page 62.*

*Stainless Ureteral Stone Basket see page 62.*

**Tiped**



Three wires  
Helical



Four wires  
Helical or  
Straight



Five wires  
Helical



Six wires  
Helical

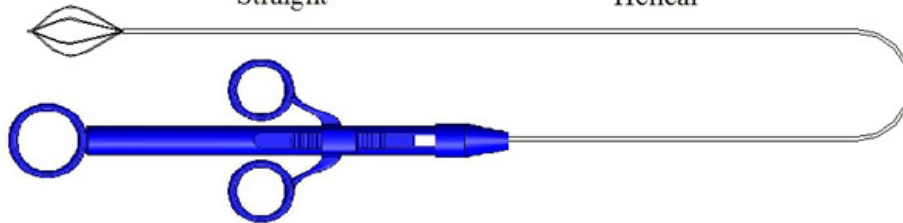
**Tipless**



Four wires  
Straight



Six wires  
Helical



U  
R  
E  
T  
E  
R  
A  
L  
  
S  
T  
O  
N  
E  
  
B  
A  
S  
K  
E  
T



U  
R  
E  
T  
E  
R  
A  
L  
A  
C  
C  
E  
S  
S  
S  
H  
E  
A  
T  
H

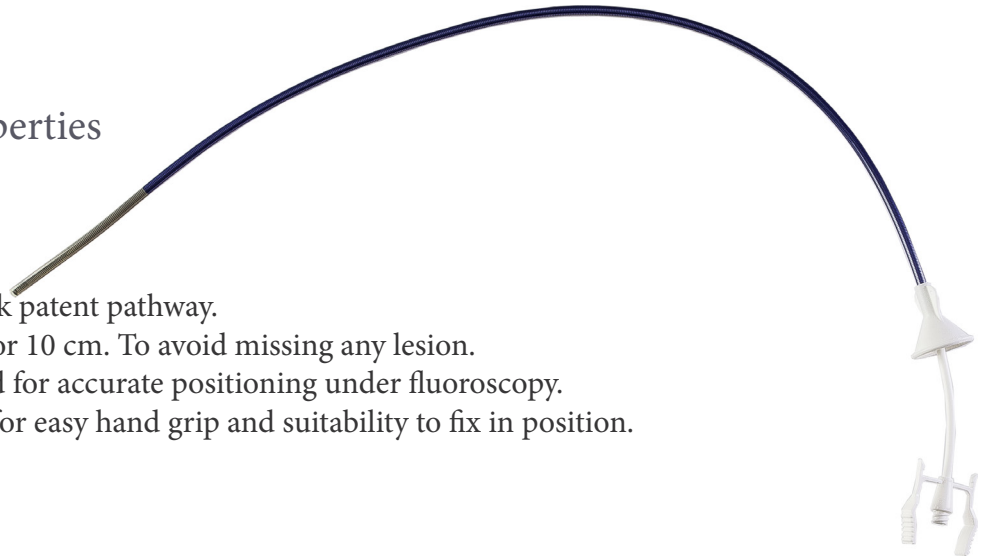
### Ureteral Access Sheath (SAFLEX)

Used to establish a conduit inside the ureter, during endoscopic urological procedures. The Ureteral access Sheath provides ureteral dilation and a continuous working channel facilitating the passage of flexible ureteroscopes and other instruments into the urinary tract.

#### Features and Properties

##### Design Features:

- Reinforced anti kink patent pathway.
- Transparent superior 10 cm. To avoid missing any lesion.
- Platinum upper end for accurate positioning under fluoroscopy.
- Funneled luer end for easy hand grip and suitability to fix in position.



<b>Code key: UAS-XX-YY</b>
UAS: Ureteral Access Sheath. XX: Outer Diameter in FR. ( 11 Fr or 14 Fr) YY: Length in cm. (from 14 to 55)

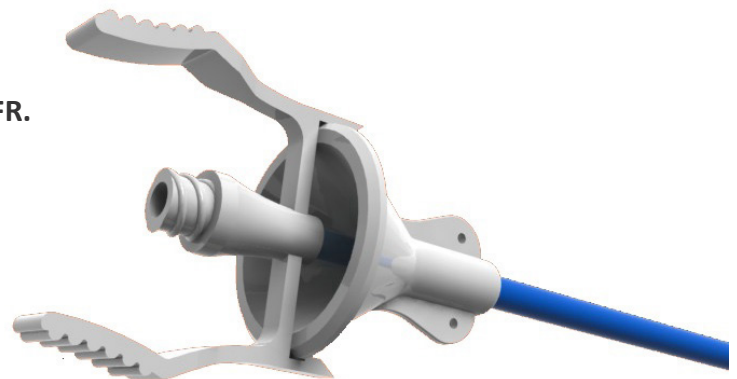
##### Note:

##### Sheath Inner Diameter

9.5 FR for Sheath 11 FR and 12 FR for Sheath 14 FR.

##### For Ordering information:

Ureteral Access Sheath see page 63





### Ureteric Sequential Dilators

For dilatation of ureteric orifice and low ureter before ureteroscopic manipulation.

### Features and Properties

#### Design Features:

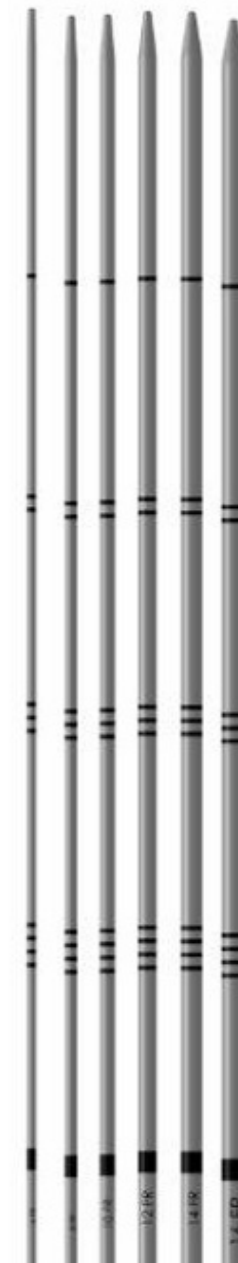
- Ureteric Sequential Dilators are made of radiopaque polypropylene.
- Easy flexibility with good pushability to dilate the ureter.

**Code key: USD-K**

USD: Ureteric Sequential Dilator.  
 K: Complete Dilators Set (6,8,10,12,14 & 16) FR

#### For Ordering information:

Ureteric Sequential Dilator see page 64



U  
R  
E  
T  
E  
R  
I  
C  
  
D  
I  
L  
A  
T  
O  
R  
S



U  
R  
E  
T  
E  
R  
A  
L  
  
D  
I  
L  
A  
T  
O  
R  
S

### Ureteral Balloon Dilators

To dilate Ureteric orifice before ureteroscopic manipulation either for stone endoreterival or for diagnostic ureteroscopy to facilitate the passage of the ureteroscope through the ureter.

#### Features and Properties

##### Design Features:

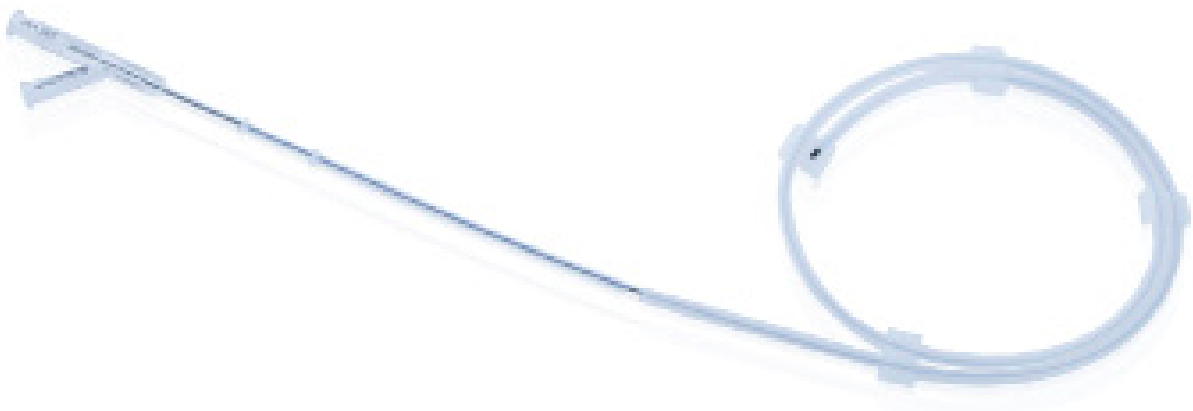
- Radiopaque markers are placed at the proximal and distal ends of the balloon for easy visualization under fluoroscopy.
- Small tube size is available to dilate ureteric stricture.

**Code key: UBD-XX-TT-M**

UBD: Ureteral balloon dilator.  
XX: Balloon size in MM.  
TT: Ballon length in CM.  
M: Inflation system (optional).

##### For Ordering information:

Ureteral Balloon Dilator see page 64



# NEPHROSTOMY CATHETERS



N  
E  
P  
H  
R  
O  
S  
T  
O  
M  
Y  
C  
A  
T  
H  
E  
T  
E  
R

## *Percutaneous Nephrostomy Catheter*

Used to drain any cystic collection inside the body either surgically, rapid graphically or ultrasound guided in cases of dilated pelvic calyceal system.

### Features and Properties

#### **Catheter Features:**

- The catheter made of polyurethane provides comfort to the patient.
- hydrophilic coating needed as an option.
- All sizes starting from 06 FR come with straightner
- All sizes come in length 30 cm. Other lengths are available if requested.

#### **Kit Features:**

- The kit is supplied with the necessary and optional items that adapted to each other to facilitate usage and material secure positioning.
- The Kit comes with PTFE J end 100 cm guide wire with nitinol core provides easy flexibility and anti break advantages. The lunderquist wire is also available as an option.

#### **Code key: NEP-XX-YY-T-K**

NEP: Nephrostomy catheter  
 XX: Size in FR.  
 YY: catheter length.  
 T: type of catheter tip. (M) for Malecot, (J) for single loop.  
 K: for complete Kit.

Add (H) at the end of code in case of hydrophilic coating.



#### **For Ordering information:**

*Nephrostomy Catheter Malecot see page 66*  
*Nephrostomy Catheter single loop (J type) see page 66*



**Kit contains:**

Complete kits package includes:

- (1) Nephrostomy Catheter.
- (1) Connection Tube.
- (1) Puncture Trocar, cannula.
- (1) Chiba Needle.
- (1) Fascial Dilators.
- (1) Scalpel.
- (1) J-end guide wire.
- (1) fixation wings.
- (1) Stopcock.(optional)
- (1) Urine bag. (optional)

Single Catheter Package includes:

- (1) Nephrostomy Catheter.
- (1) Connection tube.
- (1) Fixation wings.

***Lunderquist wire is also available. If requested, Add (Q) after kit code***

***Fascial Dilators sizes with each catheter size:***

Catheter Size	Dilators Size	Catheter Size	Dilators Size
4 FR	4 & 5 FR	14 FR	8,12,14 &16 FR
5 FR	5 & 6 FR	16 FR	8,14,16 & 18 FR
6 FR or 7 FR	6 & 8 FR	18 FR	8,16,18 & 20 FR
8 FR	6,8 &10 FR	20 FR	8,18, 20 & 22 FR
9 FR or 10 FR	8,10 & 12 FR	22 FR	8, 20, 22 & 24 FR
12 FR	8,10,12 & 14 FR	24 FR	8,22, 24 & 26 FR





N  
E  
P  
H  
R  
O  
S  
T  
O  
M  
Y  
C  
A  
T  
H  
E  
T  
E  
R

### *One step Nephrostomy Catheter.*

For application of percutaneous nephrostomy following the direct puncture technique especially when there is a dilated urinary collecting system.



### Features and Properties

#### **One step Nephrostomy package includes:**

- (1) Nephrostomy Catheter.
- (1) puncture Trocar.
- (1) Connection tube.
- (1) Fixation wings.
- (1) Scalpel.
- (1) Stopcock. (optional)
- (1) Urine Bag. (optional)

#### **Code key: NEP-XX-YY-T-OS**

NEP: Nephrostomy catheter one step.  
 XX: Size in FR.  
 YY: catheter length.  
 T: type of catheter tip. (M) for Malecot, (J) for single loop.  
 OS: for one step catheter

Add (H) at the end of code in case of hydrophilic coating.

#### **For Ordering information:**

*One step Nephrostomy catheter see page 67*



*Nephrostomy catheter J type or malecot with lock*

For secure the pig-tail or malecot, to avoid slipping of the catheter to outside.

**For Ordering information:**

*Nephrostomy catheter J type or malecot with lock see page 67*

*Re entry nephrostomy catheter malecot*

Special designed nephrostomy with ureteral stent extension in the pelvic ureteral junction.

Features and Properties

**Re entry Nephrostomy package includes:**

- (1) Nephrostomy Catheter.
- (1) Connection tube.
- (1) Fixation wings.
- (1) Stopcock. (optional)
- (1) Urine Bag. (optional)

**Code key: NEP-x/XX-YY-M**

NEP: Re entry Nephrostomy catheter.  
 x/XX: Re entry tube Size in FR/ catheter size in FR.  
 YY: catheter length.  
 M: for Malecot type.

Add (H) at the end of code in case of hydrophilic coating.

**For Ordering information:**

*Re entry Nephrostomy catheter malecot see page 67*



# NEPHROSTOMY DILATORS



### *Nephrostomy fascial dilator set*

Made of Radiopaque polyurethane and is used for fascial dilator intended for one-time use.



#### *Nephrostomy Fascial dilators set*

**Code key: DIL-SET**

DIL: Fascial Dilator.  
SET: Complete Set.  
Add (H) at the end of code in case of hydrophilic coating

**For Ordering information:**

*Nephrostomy Fascial dilators set see page 74*

#### *Nephrostomy Fascial dilators*

**Code key: DIL-XXYY**

DIL: Fascial Dilator.  
XX: Size in Fr.  
YY: Length in cm.  
Add (H) at the end of code in case of hydrophilic coating



**For Ordering information:**

*Nephrostomy Fascial dilators see page 74*

N  
E  
P  
H  
R  
O  
S  
T  
O  
M  
Y  
  
D  
I  
L  
A  
T  
O  
R



N  
E  
P  
H  
R  
O  
C  
U  
T  
A  
N  
O  
U  
S  
D  
I  
L  
A  
T  
O  
R

### *Nephrocutaneous Dilators and Sheaths*

For dilation of the nephroscope passage before endoscopic renal procedure.

#### Features and Properties

##### **Design Features:**

- Firm, kink - resistance material.
- Taper short tip designed for a traumatic placement and full tract dilation.
- The dilators and sheath are Radiopaque.
- The length of sheaths is 18 cm, can use in obese patient. The length can be reduced by scalpel cutting from the back.
- The kits contains 3 different sizes sheaths fit ( 26, 28 and 30 Fr) . Small sizes sheaths (22 or 24 Fr) can be added upon request.

<i>Code key:</i>		
Complete Set	Separate Dilators	Separate Sheath
NCD-Set	NCD-DIL-XX XX: outer diameter	NCD-SHE-XX XX: inner diameter

##### **For Ordering information:**

*Nephrocutaneous dilators and sheaths see page 65*





**Kit Contains:**

(14) Dilators:

French Size	Length ( cm)	Description
6	<b>30</b>	Renal Dilator 6 FR
8		Renal Dilator 8 FR
10		Renal Dilator 10 FR
12		Renal Dilator 12 FR
14		Renal Dilator 14 FR
16		Renal Dilator 16 FR
18		Renal Dilator 18 FR
20		Renal Dilator 20 FR
22		Renal Dilator 22 FR
24		Renal Dilator 24 FR
26		Renal Dilator 26 FR
28		Renal Dilator 28 FR
30		Renal Dilator 30 FR
<b>7</b>	<b>70</b>	<b>Guiding Catheters</b>



N  
E  
P  
H  
R  
O  
C  
U  
T  
A  
N  
E  
O  
U  
S  
  
D  
I  
L  
A  
T  
O  
R

(3) Sheaths:



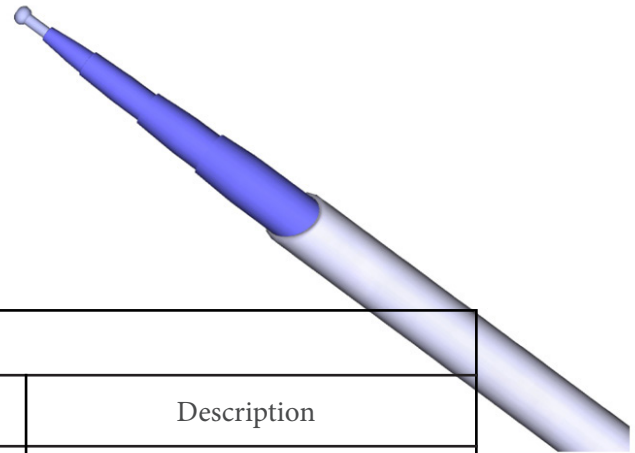
Inner diameter in FR	Outer diameter in FR	Length (CM)	Description
26	30	18	Sheath for 26 FR dilator
28	32		Sheath for 28 FR dilator
30	34		Sheath for 30 FR dilator

- (1) Introducer Sheath 10 FR X 25 cm (optional)
- (1) Stainless guiding tipped tube 7 FR X 50 cm (optional)
- (1) Sheath for 22 FR dilator (optional)
- (1) Sheath for 24 FR dilator (optional)

**Telescopic Renal dilators set**

**Code: NCD-T**

**Kit contains:**



Code key:		
French Size	Length (cm)	Description
7	50	Stainless guiding tipped tube
14	29	Renal dilator 14 F
18	29	Renal dilator 18 F
24	29	Renal dilator 24 F
30	29	Renal dilator 30 F
30	18	Sheath for 30 FR dilator



### High pressure Nephrostomy balloon dilator

Used to dilate the muscles, the fascial and renal capsule to establish a tract between the skin and the kidney during a percutaneous renal procedure.

#### Features and Properties

##### Design Features:

- Designed to maintain 30 FR diameter under high pressure.
- designed to provide effective, uniform dilation along the nephrostomy tract.
- Includes firm amplatz renal sheath.
- rated for inflation pressure up to 17 ATM.
- Radiopaque marker to confirm balloon position



##### Code key: NBD-3012-M

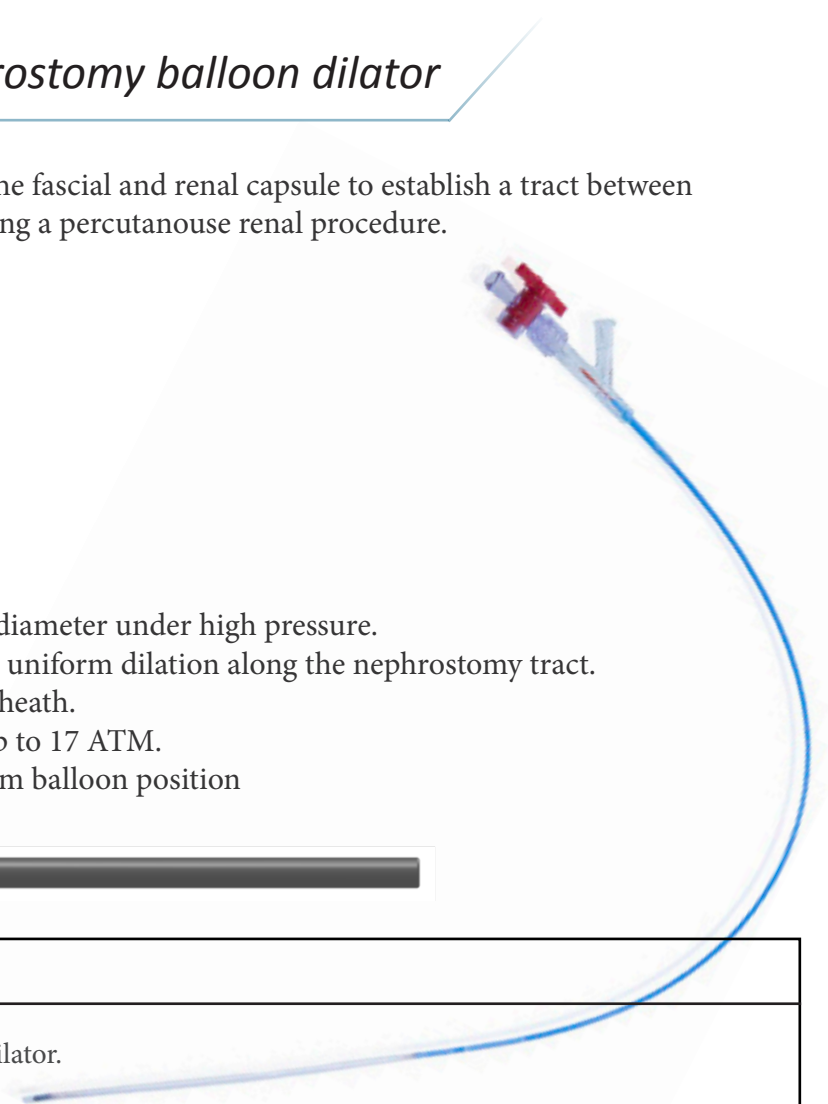
NBD: Nephrostomy Balloon Dilator.  
 30: Balloon diameter.  
 12: Balloon length.  
 M: Inflation system (optional).

##### Kit contains:

- (1) high pressure nephrostomy balloon dilator.
- (1) polyurethane Sheath.
- (1) High pressure 3 way stopcock.
- (1) Inflation device. (optional)

##### For Ordering information:

High pressure Nephrostomy balloon dilator see page 65



# SUPRA-PUBIC CYSTOSTOMY CATHETER



### Supra-pubic cystostomy catheter

For drainage of the bladder in case of impassable urethral obstruction

### Features and Properties

#### Catheter Features:

- The kit comes with metallic or plastic splittable cannula.
- The kit contains either: single lumen catheter with J or malecot tip, with a metallic straightner inside or 2 way balloon catheter.

#### Kit Features:

- The kit contains all accessories that facilitate easy insertion and post operative closed system drainage.



S  
U  
P  
R  
A  
-  
P  
U  
B  
I  
C  
  
C  
Y  
S  
T  
O  
S  
T  
O  
M  
Y



S  
U  
P  
R  
A  
-  
P  
U  
B  
I  
C  
C  
Y  
S  
T  
O  
M  
Y

*Supra-pubic cystostomy catheter with metal cannula*

**Kit Contains:**

J or Malecot catheter kit includes:

- (1) Catheter with straightner.
- (1) Splitable cystostomy Metallic cannula.
- (1) Connection Tube.
- (1) Scalpel#11
- (1) fixation wings.
- (1) Stopcock.
- (1) Urine bag. (optional)

Two way Foley catheter kit includes:

- (1) Two way foley catheter.
- (1) Splitable cystostomy Metallic cannula.
- (1) Scalpel#11
- (1) Urine bag. (optional)



**Code key: SUP-XX-T-K**

- SUP: Catheter and metal cannula.
- XX: Size in FR.
- T: Type of the catheter
  - (J) for polyurethane catheter single J tip.
  - (M) for polyurethane catheter Malecot tip.
  - (S) for latex silicon foley catheter two way.
  - (L) for latex silicon coated catheter two way.
- K: Completer package.

**For Ordering information:**

*Supra-pubic cystostomy catheter with metal cannula see page 69*



*Supra-pubic cystostomy catheter with plastic cannula*

S  
U  
P  
R  
A  
-  
P  
U  
B  
I  
C  
  
C  
Y  
S  
T  
O  
S  
T  
O  
M  
Y

**Kit Contains:**

J or Malecot catheter kit includes:

- (1) Catheter with straightner.
- (1) Splitable cystostomy plastic cannula.
- (1) Connection Tube.
- (1) Scalpel#11
- (1) fixation wings.
- (1) Stopcock.
- (1) Urine bag. (optional)

Two way foley catheter kit includes:

- (1) Two way foley catheter.
- (1) Splitable cystostomy plasticcannula.
- (1) Scalpel#11
- (1) Urine bag. (optional)



**Code key: CYST-XX-T-k**

CYST: Catheter and plastic cannula.  
 XX: size in FR.  
 T: Type of the catheter  
 (J) for polyurethane catheter single J tip.  
 (M) for polyurethane catheter Malecot tip.  
 (S) for latex silicon foley catheter two way.  
 (L) for latex silicon coated catheter two way.  
 K: Completer package.

**For Ordering information:**

*Supra-pubic cystostomy catheter with plastic cannula see page 69*

# URETHRAL BALLOON CATHETER



### Urethral Balloon Catheter

For drainage of urine from the bladder.

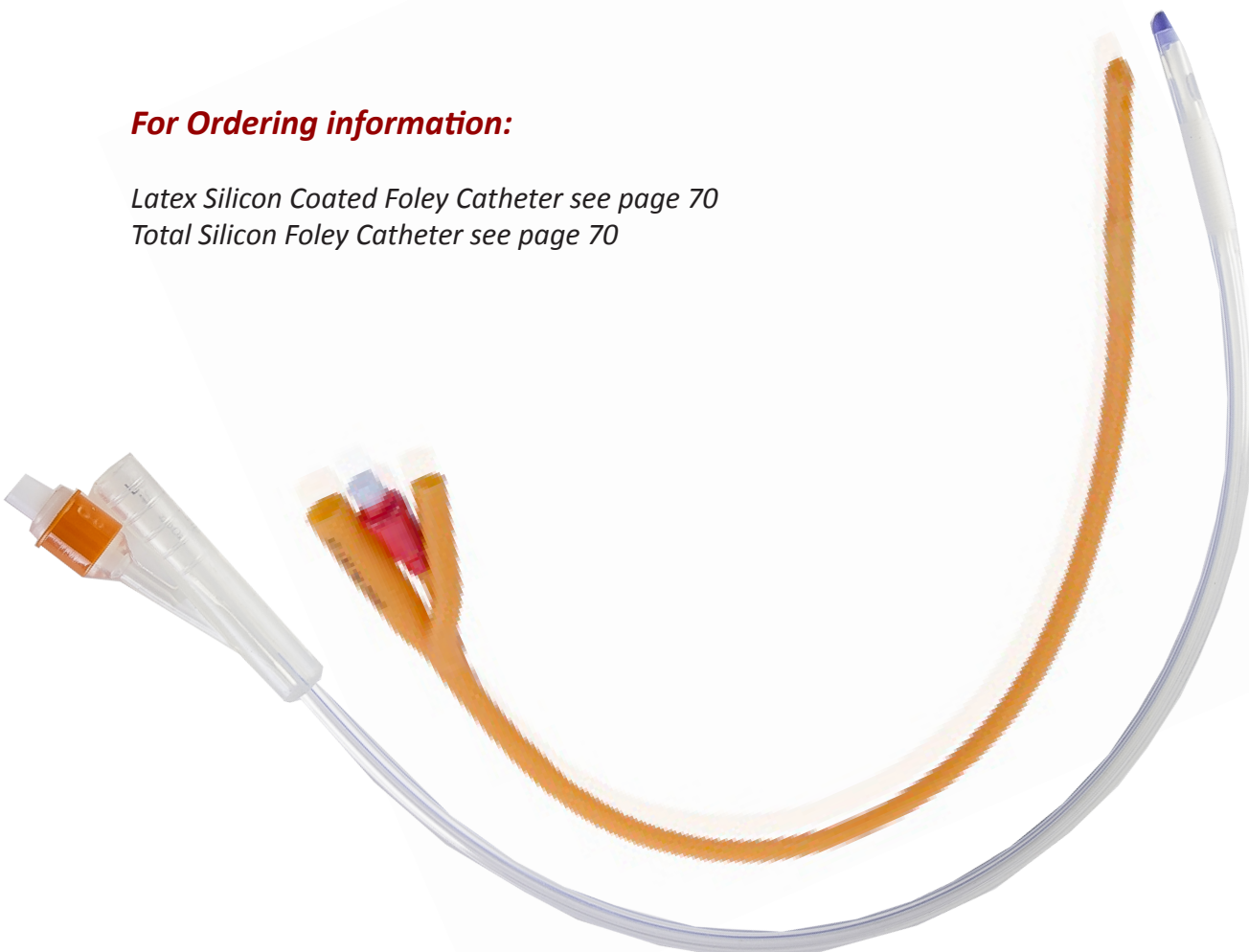
**Code key: F-MM-XX-L**

F: Foley Catheter.  
 MM: Material  
     (TS) for total Silicon.  
     (SC) for latex Silicon coated.  
 XX: Size in FR.  
 L: Number of lumens.

**For Ordering information:**

*Latex Silicon Coated Foley Catheter see page 70*  
*Total Silicon Foley Catheter see page 70*

F  
O  
L  
L  
E  
Y  
  
C  
A  
T  
H  
E  
T  
E  
R



# URODYNAMIC CATHETER



### Urodynamic Catheter

Urodynamic catheter is used to estimate changes that occur inside the bladder and/or the urethra during filling or voiding. Amecath urodynamic catheter is either two lumens for cystometric pressure change monitoring or 3 lumen to monitor urethral pressure.

Rectal Urodynamic catheter is used to estimate abdominal pressure changes during filling or voiding. Amecath Rectal urodynamic catheter has one or two lumen.

### Features and Properties

#### Catheter Features:

- Urodynamic catheters are made of radiopaque polyurethane.
- In general the catheter has length 40 cm and the rectal catheter has length 30 cm.
- Pig tail two lumen cystometry is also available for secure positioning inside the bladder.

Urodynamic Catheter	Rectal Urodynamic Catheter
Code key: UD-L-XX-J	Code key: UD-RL-XX-N
UD: Urodynamic Catheter. L: Number of lumens. XX: Catheter size in FR. J: If pig tail cystometry is requested.	UD-R: Rectal Urodynamic Catheter. L: Number of lumens. XX: Catheter size in FR. N: Non latex balloon material.

#### For Ordering information:

Single lumen , double lumen and triple lumen see page 68

U  
R  
O  
D  
Y  
N  
A  
M  
I  
C  
  
C  
A  
T  
H  
E  
T  
E  
R

# NEEDLES



### Automatic Biopsy Needle

Used to take a biopsy from prostate only.  
Amecath automatic biopsy gun needle is a tru-cut type biopsy needle can be used with common reusable biopsy guns.

#### Features and Properties

##### Design Features:

- Large sample notch ( 15 or 20 mm).
- Color code.
- Echogenic tip



##### Code key: AUTOCUT-XX-YY

AUTOCUT: Automatic biopsy needle.  
 XX: Sizes in gauge.  
 YY: Lengths in cm

##### For Ordering information:

Automatic Biopsy Needle see page 72



B  
I  
O  
P  
S  
Y  
  
N  
E  
E  
D  
L  
E



B  
I  
O  
P  
S  
Y  
  
N  
E  
E  
D  
L  
E

### *Semi-automatic Biopsy Needle*

Used to take a biopsy from prostate only.  
Amecath semi automatic biopsy gun needle is a spring loaded tru-cut type biopsy device that used for histological biopsy from a variety of soft tissues and organs.

#### Features and Properties

##### **Design Features:**

- Inner echogenic marker.
- Depth marks.
- Large sample notch ( 20 mm)
- color code.



#### **Code key: SEMICUT-XX-YY**

SEMICUT: Semi -utomatic biopsy needle.  
 XX: Sizes in gauge.  
 YY: Lengths in cm

#### **For Ordering information:**

*Semi-Automatic Biopsy Needle see page 72*



### Puncture and chiba needle

#### Features and Properties

**Design Features:**

- User friendly design.
- Accurate depth placement with centimeter marks
- echogenic tip.
- Clear and color coded needle hub design

### Puncture needle

Used to penetrate the pelvicalyceal system as a first step of dilation before PCNL

<b>Code key: PUN-XX-YY</b>
PUN: Puncture needle. XX: Sizes in gauge. YY: Lengths in cm

### Chiba needle

Used to inject dye in the pelvicalyceal system in cases of difficult puncture

<b>Code key: CHN-XX-YY</b>
CHN: Chiba needle. XX: Sizes in gauge. YY: Lengths in cm



P  
U  
N  
C  
T  
U  
R  
E  
&  
C  
H  
I  
B  
A

**For Ordering information:**

*Puncture and Chiba Needle see page 73*

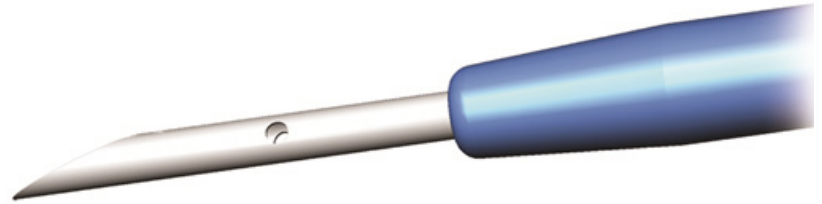


I  
N  
J  
E  
C  
T  
I  
O  
N  
N  
E  
E  
D  
L  
E

### *Bladder and prostatic injection needle*

Injection needle is used to inject fluidy substances either inside the urinary bladder or the prostate.

#### Features and Properties



#### **Design Features:**

- The presence of side holes to avoid extravasation outside the bladder wall.
- The injection needle comes with syringe activates non return valve.

#### **Kit contains:**

- (1) injection needle.
- (1) Syringe activates non stop return valve.

**Code key:** *IN-XX-H*

IN: Injection needle.  
 XX: Sizes in gauge.  
 H: (H) for side holes, (N) for no holes.

#### **For Ordering information:**

*Bladder and prostatic injection needle see page 73*



# GUIDE WIRE



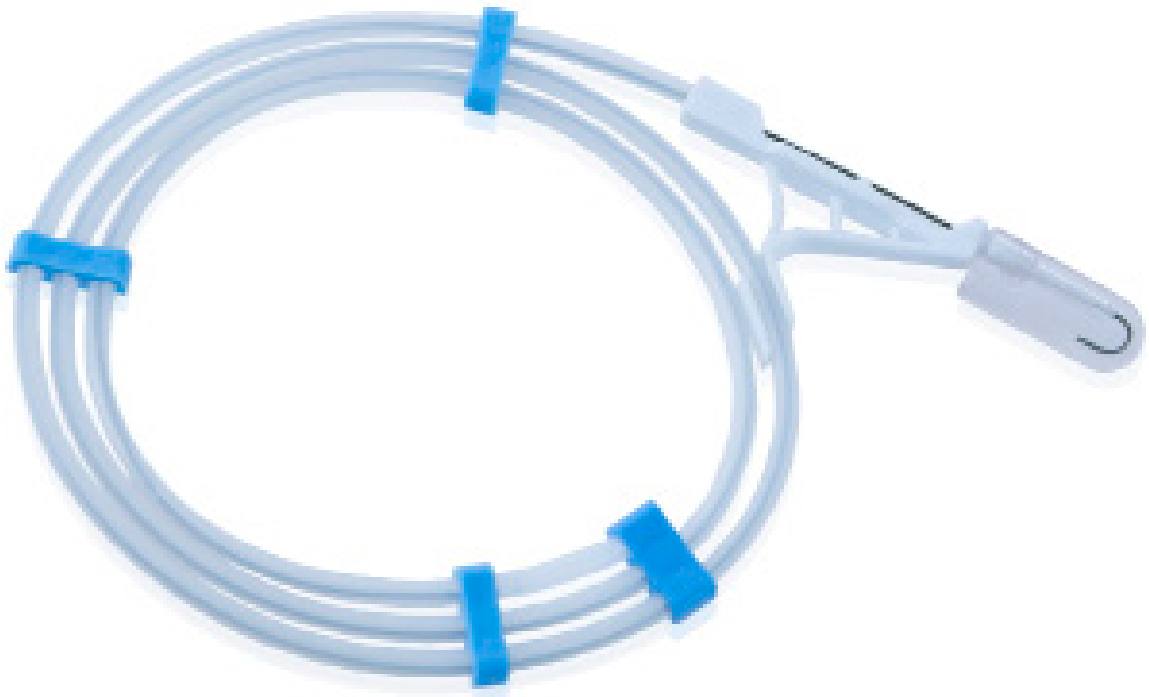
### Guide Wire

The guide wires are intended to facilitate the placement of endourological instruments during diagnostic or interventional procedures.

**For Ordering information:**

- Guide Wire PTFE coated see page 75*
- Guide Wires Hydrophilic coated see page 75*
- Nitinol Guide wires see page 76*
- Zebra Guide wires see page 76*
- Lunderquist Guide wire see page 76.*

G  
U  
I  
D  
E  
  
W  
I  
R  
E:



## *Endoscopic infusion set*

For fluids irrigation during endoscopic procedures.

### Features and Properties

#### ***Design Features:***

- Manufactured from non-toxic, non-irritant medical grade PVC.
- Thumb operated clamps, helps quick and smooth change of bottles.
- Proximal end fitted with flexible silicon tubing for easy connection to endoscope.

*Code key: T.U.R-set*





N  
E  
L  
A  
T  
O  
N  
C  
A  
T  
H  
E  
R  
S

## Nelaton Catheters

For drainage of urine from the bladder through urethral.

### Features and Properties

#### **Catheter Features:**

- Amecath nelaton catheters are made of medical grade PVC non- toxic, non-irritant.
- Proximal end is fitted with funnel shaped connector for safe connection to urine bag.
- Rounded, closed tip with two lateral eyes for efficient drainage.
- color coded plain connector easy identification of size.
- Nelaton catheter length is 40 cm .

#### **Code key: NEL-XX**

NEL: Nelaton Catheter.  
XX: Size in FR.

#### **For Ordering information:**

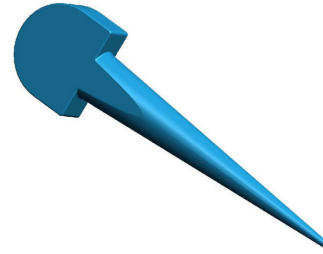
*Nelaton Catheters see page 71*





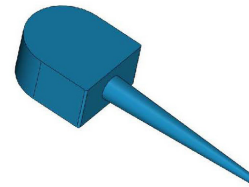
*Adult Metal dilator (MD-A)*

Used for dilation of the penile urethral meatus for adults.



*Pediatric Metal dilator (MD-P)*

Used for dilation of the penile urethral meatus for pediatric.



*Eroscopy Channel plug*



*Urethral Catheter Plug*

Used to securely close the urine catheter



*Catheter plug with Valve*

Used to control the emptying of the urinary bladder.



*Three way stopcock*

Used to facilitate multiple lines through single IV access.



A  
C  
C  
E  
S  
S  
O  
R  
I  
E  
S

# ORDERING INFORMATION



Double loop Stents Short Term

DOUBLE LOOP STENT 03 FR SHORT TERM

DOUBLE LOOP STENT,03Fr SIMPLE PUSHER,SHORT TERM BLUE,OPEN/OPEN, NO COATING	DOUBLE LOOP STENT,03Fr SIMPLE PUSHER,SHORT TERM BLUE,OPEN/OPEN, HYDROPHYLIC COATING	DOUBLE LOOP STENT,03Fr SIMPLE PUSHER,SHORT TERM BLUE,OPEN/CLOSE, NO COATING	DOUBLE LOOP STENT,03Fr SIMPLE PUSHER,SHORT TERM BLUE,OPEN/CLOSE, HYDROPHYLIC COATING	DOUBLE LOOP STENT,03Fr SIMPLE PUSHER,SHORT TERM BLUE,CLOSE/CLOSE, NO COATING	DOUBLE LOOP STENT,03Fr SIMPLE PUSHER,SHORT TERM BLUE,CLOSE/CLOSE, HYDROPHYLIC COATING
DLU-0312-SP-STB-O/O-K-T-0	DLU-0312-SP-STB-O/O-K-T-H	DLU-0312-SP-STB-O/C-K-T-0	DLU-0312-SP-STB-O/C-K-T-H	DLU-0312-SP-STB-C/C-K-T-0	DLU-0312-SP-STB-C/C-K-T-H
DLU-0314-SP-STB-O/O-K-T-0	DLU-0314-SP-STB-O/O-K-T-H	DLU-0314-SP-STB-O/C-K-T-0	DLU-0314-SP-STB-O/C-K-T-H	DLU-0314-SP-STB-C/C-K-T-0	DLU-0314-SP-STB-C/C-K-T-H
DLU-0316-SP-STB-O/O-K-T-0	DLU-0316-SP-STB-O/O-K-T-H	DLU-0316-SP-STB-O/C-K-T-0	DLU-0316-SP-STB-O/C-K-T-H	DLU-0316-SP-STB-C/C-K-T-0	DLU-0316-SP-STB-C/C-K-T-H
DLU-0318-SP-STB-O/O-K-T-0	DLU-0318-SP-STB-O/O-K-T-H	DLU-0318-SP-STB-O/C-K-T-0	DLU-0318-SP-STB-O/C-K-T-H	DLU-0318-SP-STB-C/C-K-T-0	DLU-0318-SP-STB-C/C-K-T-H
DLU-0320-SP-STB-O/O-K-T-0	DLU-0320-SP-STB-O/O-K-T-H	DLU-0320-SP-STB-O/C-K-T-0	DLU-0320-SP-STB-O/C-K-T-H	DLU-0320-SP-STB-C/C-K-T-0	DLU-0320-SP-STB-C/C-K-T-H
DLU-0322-SP-STB-O/O-K-T-0	DLU-0322-SP-STB-O/O-K-T-H	DLU-0322-SP-STB-O/C-K-T-0	DLU-0322-SP-STB-O/C-K-T-H	DLU-0322-SP-STB-C/C-K-T-0	DLU-0322-SP-STB-C/C-K-T-H
DLU-0324-SP-STB-O/O-K-T-0	DLU-0324-SP-STB-O/O-K-T-H	DLU-0324-SP-STB-O/C-K-T-0	DLU-0324-SP-STB-O/C-K-T-H	DLU-0324-SP-STB-C/C-K-T-0	DLU-0324-SP-STB-C/C-K-T-H
DLU-0326-SP-STB-O/O-K-T-0	DLU-0326-SP-STB-O/O-K-T-H	DLU-0326-SP-STB-O/C-K-T-0	DLU-0326-SP-STB-O/C-K-T-H	DLU-0326-SP-STB-C/C-K-T-0	DLU-0326-SP-STB-C/C-K-T-H
DLU-0328-SP-STB-O/O-K-T-0	DLU-0328-SP-STB-O/O-K-T-H	DLU-0328-SP-STB-O/C-K-T-0	DLU-0328-SP-STB-O/C-K-T-H	DLU-0328-SP-STB-C/C-K-T-0	DLU-0328-SP-STB-C/C-K-T-H
DLU-0330-SP-STB-O/O-K-T-0	DLU-0330-SP-STB-O/O-K-T-H	DLU-0330-SP-STB-O/C-K-T-0	DLU-0330-SP-STB-O/C-K-T-H	DLU-0330-SP-STB-C/C-K-T-0	DLU-0330-SP-STB-C/C-K-T-H

DOUBLE LOOP STENT 03.6 FR SHORT TERM

DOUBLE LOOP STENT,03.6Fr SIMPLE PUSHER,SHORT TERM BLUE,OPEN/OPEN, NO COATING	DOUBLE LOOP STENT,03.6Fr SIMPLE PUSHER,SHORT TERM BLUE,OPEN/OPEN, HYDROPHYLIC COATING	DOUBLE LOOP STENT,03.6Fr SIMPLE PUSHER,SHORT TERM BLUE,OPEN/CLOSE, NO COATING	DOUBLE LOOP STENT,03.6Fr SIMPLE PUSHER,SHORT TERM BLUE,OPEN/CLOSE, HYDROPHYLIC COATING	DOUBLE LOOP STENT,03.6Fr SIMPLE PUSHER,SHORT TERM BLUE,CLOSE/CLOSE, NO COATING	DOUBLE LOOP STENT,03.6Fr SIMPLE PUSHER,SHORT TERM BLUE,CLOSE/CLOSE, HYDROPHYLIC COATING
DLU-0312(6)-SP-STB-O/O-K-T-0	DLU-0312(6)-SP-STB-O/O-K-T-H	DLU-0312(6)-SP-STB-O/C-K-T-0	DLU-0312(6)-SP-STB-O/C-K-T-H	DLU-0312(6)-SP-STB-C/C-K-T-0	DLU-0312(6)-SP-STB-C/C-K-T-H
DLU-0314(6)-SP-STB-O/O-K-T-0	DLU-0314(6)-SP-STB-O/O-K-T-H	DLU-0314(6)-SP-STB-O/C-K-T-0	DLU-0314(6)-SP-STB-O/C-K-T-H	DLU-0314(6)-SP-STB-C/C-K-T-0	DLU-0314(6)-SP-STB-C/C-K-T-H
DLU-0316(6)-SP-STB-O/O-K-T-0	DLU-0316(6)-SP-STB-O/O-K-T-H	DLU-0316(6)-SP-STB-O/C-K-T-0	DLU-0316(6)-SP-STB-O/C-K-T-H	DLU-0316(6)-SP-STB-C/C-K-T-0	DLU-0316(6)-SP-STB-C/C-K-T-H
DLU-0318(6)-SP-STB-O/O-K-T-0	DLU-0318(6)-SP-STB-O/O-K-T-H	DLU-0318(6)-SP-STB-O/C-K-T-0	DLU-0318(6)-SP-STB-O/C-K-T-H	DLU-0318(6)-SP-STB-C/C-K-T-0	DLU-0318(6)-SP-STB-C/C-K-T-H
DLU-0320(6)-SP-STB-O/O-K-T-0	DLU-0320(6)-SP-STB-O/O-K-T-H	DLU-0320(6)-SP-STB-O/C-K-T-0	DLU-0320(6)-SP-STB-O/C-K-T-H	DLU-0320(6)-SP-STB-C/C-K-T-0	DLU-0320(6)-SP-STB-C/C-K-T-H
DLU-0322(6)-SP-STB-O/O-K-T-0	DLU-0322(6)-SP-STB-O/O-K-T-H	DLU-0322(6)-SP-STB-O/C-K-T-0	DLU-0322(6)-SP-STB-O/C-K-T-H	DLU-0322(6)-SP-STB-C/C-K-T-0	DLU-0322(6)-SP-STB-C/C-K-T-H
DLU-0324(6)-SP-STB-O/O-K-T-0	DLU-0324(6)-SP-STB-O/O-K-T-H	DLU-0324(6)-SP-STB-O/C-K-T-0	DLU-0324(6)-SP-STB-O/C-K-T-H	DLU-0324(6)-SP-STB-C/C-K-T-0	DLU-0324(6)-SP-STB-C/C-K-T-H
DLU-0326(6)-SP-STB-O/O-K-T-0	DLU-0326(6)-SP-STB-O/O-K-T-H	DLU-0326(6)-SP-STB-O/C-K-T-0	DLU-0326(6)-SP-STB-O/C-K-T-H	DLU-0326(6)-SP-STB-C/C-K-T-0	DLU-0326(6)-SP-STB-C/C-K-T-H
DLU-0328(6)-SP-STB-O/O-K-T-0	DLU-0328(6)-SP-STB-O/O-K-T-H	DLU-0328(6)-SP-STB-O/C-K-T-0	DLU-0328(6)-SP-STB-O/C-K-T-H	DLU-0328(6)-SP-STB-C/C-K-T-0	DLU-0328(6)-SP-STB-C/C-K-T-H
DLU-0330(6)-SP-STB-O/O-K-T-0	DLU-0330(6)-SP-STB-O/O-K-T-H	DLU-0330(6)-SP-STB-O/C-K-T-0	DLU-0330(6)-SP-STB-O/C-K-T-H	DLU-0330(6)-SP-STB-C/C-K-T-0	DLU-0330(6)-SP-STB-C/C-K-T-H

ORDERING INFORMATION



ORDERING INFORMATION

DOUBLE LOOP STENT 04 FR SHORT TERM

Table with 6 columns: DOUBLE LOOP STENT,04Fr SIMPLE PUSHER,SHORT TERM BLUE,OPEN/OPEN, NO COATING; DOUBLE LOOP STENT,04Fr SIMPLE PUSHER,SHORT TERM BLUE,OPEN/OPEN, HYDROPHYLIC COATING; DOUBLE LOOP STENT,04Fr SIMPLE PUSHER,SHORT TERM BLUE,OPEN/CLOSE, NO COATING; DOUBLE LOOP STENT,04Fr SIMPLE PUSHER,SHORT TERM BLUE,OPEN/CLOSE, HYDROPHYLIC COATING; DOUBLE LOOP STENT,04Fr SIMPLE PUSHER,SHORT TERM BLUE,CLOSE/CLOSE, NO COATING; DOUBLE LOOP STENT,04Fr SIMPLE PUSHER,SHORT TERM BLUE,CLOSE/CLOSE, HYDROPHYLIC COATING. Rows include DLU-0412, DLU-0414, DLU-0416, DLU-0418, DLU-0420, DLU-0422, DLU-0424, DLU-0426, DLU-0428, DLU-0430.

DOUBLE LOOP STENT 04.7 FR SHORT TERM

Table with 6 columns: DOUBLE LOOP STENT,04.7Fr SIMPLE PUSHER,SHORT TERM BLUE,OPEN/OPEN, NO COATING; DOUBLE LOOP STENT,04.7Fr SIMPLE PUSHER,SHORT TERM BLUE,OPEN/OPEN, HYDROPHYLIC COATING; DOUBLE LOOP STENT,04.7Fr SIMPLE PUSHER,SHORT TERM BLUE,OPEN/CLOSE, NO COATING; DOUBLE LOOP STENT,04.7Fr SIMPLE PUSHER,SHORT TERM BLUE,OPEN/CLOSE, HYDROPHYLIC COATING; DOUBLE LOOP STENT,04.7Fr SIMPLE PUSHER,SHORT TERM BLUE,CLOSE/CLOSE, NO COATING; DOUBLE LOOP STENT,04.7Fr SIMPLE PUSHER,SHORT TERM BLUE,CLOSE/CLOSE, HYDROPHYLIC COATING. Rows include DLU-0412(7), DLU-0414(7), DLU-0416(7), DLU-0418(7), DLU-0420(7), DLU-0422(7), DLU-0424(7), DLU-0426(7), DLU-0428(7), DLU-0430(7). A second section follows with COAXIAL PUSHER,SHORT TERM variants.



DOUBLE LOOP STENT 04.8 FR SHORT TERM

DOUBLE LOOP STENT,04.8Fr SIMPLE PUSHER,SHORT TERM BLUE,OPEN/OPEN, NO COATING	DOUBLE LOOP STENT,04.8Fr SIMPLE PUSHER,SHORT TERM BLUE,OPEN/OPEN, HYDROPHYLIC COATING	DOUBLE LOOP STENT,04.8Fr SIMPLE PUSHER,SHORT TERM BLUE,OPEN/CLOSE, NO COATING	DOUBLE LOOP STENT,04.8Fr SIMPLE PUSHER,SHORT TERM BLUE,OPEN/CLOSE, HYDROPHYLIC COATING	DOUBLE LOOP STENT,04.8Fr SIMPLE PUSHER,SHORT TERM BLUE,CLOSE/CLOSE, NO COATING	DOUBLE LOOP STENT,04.8Fr SIMPLE PUSHER,SHORT TERM BLUE,CLOSE/CLOSE, HYDROPHYLIC COATING
DLU-0412(8)-SP-STB-O/O-K-T-0	DLU-0412(8)-SP-STB-O/O-K-T-H	DLU-0412(8)-SP-STB-O/C-K-T-0	DLU-0412(8)-SP-STB-O/C-K-T-H	DLU-0412(8)-SP-STB-C/C-K-T-0	DLU-0412(8)-SP-STB-C/C-K-T-H
DLU-0414(8)-SP-STB-O/O-K-T-0	DLU-0414(8)-SP-STB-O/O-K-T-H	DLU-0414(8)-SP-STB-O/C-K-T-0	DLU-0414(8)-SP-STB-O/C-K-T-H	DLU-0414(8)-SP-STB-C/C-K-T-0	DLU-0414(8)-SP-STB-C/C-K-T-H
DLU-0416(8)-SP-STB-O/O-K-T-0	DLU-0416(8)-SP-STB-O/O-K-T-H	DLU-0416(8)-SP-STB-O/C-K-T-0	DLU-0416(8)-SP-STB-O/C-K-T-H	DLU-0416(8)-SP-STB-C/C-K-T-0	DLU-0416(8)-SP-STB-C/C-K-T-H
DLU-0418(8)-SP-STB-O/O-K-T-0	DLU-0418(8)-SP-STB-O/O-K-T-H	DLU-0418(8)-SP-STB-O/C-K-T-0	DLU-0418(8)-SP-STB-O/C-K-T-H	DLU-0418(8)-SP-STB-C/C-K-T-0	DLU-0418(8)-SP-STB-C/C-K-T-H
DLU-0420(8)-SP-STB-O/O-K-T-0	DLU-0420(8)-SP-STB-O/O-K-T-H	DLU-0420(8)-SP-STB-O/C-K-T-0	DLU-0420(8)-SP-STB-O/C-K-T-H	DLU-0420(8)-SP-STB-C/C-K-T-0	DLU-0420(8)-SP-STB-C/C-K-T-H
DLU-0422(8)-SP-STB-O/O-K-T-0	DLU-0422(8)-SP-STB-O/O-K-T-H	DLU-0422(8)-SP-STB-O/C-K-T-0	DLU-0422(8)-SP-STB-O/C-K-T-H	DLU-0422(8)-SP-STB-C/C-K-T-0	DLU-0422(8)-SP-STB-C/C-K-T-H
DLU-0424(8)-SP-STB-O/O-K-T-0	DLU-0424(8)-SP-STB-O/O-K-T-H	DLU-0424(8)-SP-STB-O/C-K-T-0	DLU-0424(8)-SP-STB-O/C-K-T-H	DLU-0424(8)-SP-STB-C/C-K-T-0	DLU-0424(8)-SP-STB-C/C-K-T-H
DLU-0426(8)-SP-STB-O/O-K-T-0	DLU-0426(8)-SP-STB-O/O-K-T-H	DLU-0426(8)-SP-STB-O/C-K-T-0	DLU-0426(8)-SP-STB-O/C-K-T-H	DLU-0426(8)-SP-STB-C/C-K-T-0	DLU-0426(8)-SP-STB-C/C-K-T-H
DLU-0428(8)-SP-STB-O/O-K-T-0	DLU-0428(8)-SP-STB-O/O-K-T-H	DLU-0428(8)-SP-STB-O/C-K-T-0	DLU-0428(8)-STB-O/C-K-K-T-H	DLU-0428(8)-SP-STB-C/C-K-T-0	DLU-0428(8)-SP-STB-C/C-K-T-H
DLU-0430(8)-SP-STB-O/O-K-T-0	DLU-0430(8)-SP-STB-O/O-K-T-H	DLU-0430(8)-SP-STB-O/C-K-T-0	DLU-0430(8)-SP-STB-O/C-K-T-H	DLU-0430(8)-SP-STB-C/C-K-T-0	DLU-0430(8)-SP-STB-C/C-K-T-H
DOUBLE LOOP STENT,04.8Fr COAXIAL PUSHER,SHORT TERM BLUE,OPEN/OPEN, NO COATING	DOUBLE LOOP STENT,04.8Fr COAXIAL PUSHER,SHORT TERM BLUE,OPEN/OPEN, HYDROPHYLIC COATING	DOUBLE LOOP STENT,04.8Fr COAXIAL PUSHER,SHORT TERM BLUE,OPEN/CLOSE, NO COATING	DOUBLE LOOP STENT,04.8Fr COAXIAL PUSHER,SHORT TERM BLUE,OPEN/CLOSE, HYDROPHYLIC COATING	DOUBLE LOOP STENT,04.8Fr COAXIAL PUSHER,SHORT TERM BLUE,CLOSE/CLOSE, NO COATING	DOUBLE LOOP STENT,04.8Fr COAXIAL PUSHER,SHORT TERM BLUE,CLOSE/CLOSE, HYDROPHYLIC COATING
DLU-0412(8)-CP-STB-O/O-K-T-0	DLU-0412(8)-CP-STB-O/O-K-T-H	DLU-0412(8)-CP-STB-O/C-K-T-0	DLU-0412(8)-CP-STB-O/C-K-T-H	DLU-0412(8)-CP-STB-C/C-K-T-0	DLU-0412(8)-CP-STB-C/C-K-T-H
DLU-0414(8)-CP-STB-O/O-K-T-0	DLU-0414(8)-CP-STB-O/O-K-T-H	DLU-0414(8)-CP-STB-O/C-K-T-0	DLU-0414(8)-CP-STB-O/C-K-T-H	DLU-0414(8)-CP-STB-C/C-K-T-0	DLU-0414(8)-CP-STB-C/C-K-T-H
DLU-0416(8)-CP-STB-O/O-K-T-0	DLU-0416(8)-CP-STB-O/O-K-T-H	DLU-0416(8)-CP-STB-O/C-K-T-0	DLU-0416(8)-CP-STB-O/C-K-T-H	DLU-0416(8)-CP-STB-C/C-K-T-0	DLU-0416(8)-CP-STB-C/C-K-T-H
DLU-0418(8)-CP-STB-O/O-K-T-0	DLU-0418(8)-CP-STB-O/O-K-T-H	DLU-0418(8)-CP-STB-O/C-K-T-0	DLU-0418(8)-CP-STB-O/C-K-T-H	DLU-0418(8)-CP-STB-C/C-K-T-0	DLU-0418(8)-CP-STB-C/C-K-T-H
DLU-0420(8)-CP-STB-O/O-K-T-0	DLU-0420(8)-CP-STB-O/O-K-T-H	DLU-0420(8)-CP-STB-O/C-K-T-0	DLU-0420(8)-CP-STB-O/C-K-T-H	DLU-0420(8)-CP-STB-C/C-K-T-0	DLU-0420(8)-CP-STB-C/C-K-T-H
DLU-0422(8)-CP-STB-O/O-K-T-0	DLU-0422(8)-CP-STB-O/O-K-T-H	DLU-0422(8)-CP-STB-O/C-K-T-0	DLU-0422(8)-CP-STB-O/C-K-T-H	DLU-0422(8)-CP-STB-C/C-K-T-0	DLU-0422(8)-CP-STB-C/C-K-T-H
DLU-0424(8)-CP-STB-O/O-K-T-0	DLU-0424(8)-CP-STB-O/O-K-T-H	DLU-0424(8)-CP-STB-O/C-K-T-0	DLU-0424(8)-CP-STB-O/C-K-T-H	DLU-0424(8)-CP-STB-C/C-K-T-0	DLU-0424(8)-CP-STB-C/C-K-T-H
DLU-0426(8)-CP-STB-O/O-K-T-0	DLU-0426(8)-CP-STB-O/O-K-T-H	DLU-0426(8)-CP-STB-O/C-K-T-0	DLU-0426(8)-CP-STB-O/C-K-T-H	DLU-0426(8)-CP-STB-C/C-K-T-0	DLU-0426(8)-CP-STB-C/C-K-T-H
DLU-0428(8)-CP-STB-O/O-K-T-0	DLU-0428(8)-CP-STB-O/O-K-T-H	DLU-0428(8)-CP-STB-O/C-K-T-0	DLU-0428(8)-CP-STB-O/C-K-T-H	DLU-0428(8)-CP-STB-C/C-K-T-0	DLU-0428(8)-CP-STB-C/C-K-T-H
DLU-0430(8)-CP-STB-O/O-K-T-0	DLU-0430(8)-CP-STB-O/O-K-T-H	DLU-0430(8)-CP-STB-O/C-K-T-0	DLU-0430(8)-CP-STB-O/C-K-T-H	DLU-0430(8)-CP-STB-C/C-K-T-0	DLU-0430(8)-CP-STB-C/C-K-T-H

O  
R  
D  
E  
R  
I  
N  
G  
I  
N  
F  
O  
R  
M  
A  
T  
I  
O  
N



ORDERING INFORMATION

DOUBLE LOOP STENT 05 FR SHORT TERM

DOUBLE LOOP STENT,05Fr SIMPLE PUSHER,SHORT TERM BLUE,OPEN/OPEN, NO COATING	DOUBLE LOOP STENT,05Fr SIMPLE PUSHER,SHORT TERM BLUE,OPEN/OPEN, HYDROPHYLIC COATING	DOUBLE LOOP STENT,05Fr SIMPLE PUSHER,SHORT TERM BLUE,OPEN/CLOSE, NO COATING	DOUBLE LOOP STENT,05Fr SIMPLE PUSHER,SHORT TERM BLUE,OPEN/CLOSE, HYDROPHYLIC COATING	DOUBLE LOOP STENT,05Fr SIMPLE PUSHER,SHORT TERM BLUE,CLOSE/CLOSE, NO COATING	DOUBLE LOOP STENT,05Fr SIMPLE PUSHER,SHORT TERM BLUE,CLOSE/CLOSE, HYDROPHYLIC COATING
DLU-0512-SP-STB-O/O-K-T-0	DLU-0512-SP-STB-O/O-K-T-H	DLU-0512-SP-STB-O/C-K-T-0	DLU-0512-SP-STB-O/C-K-T-H	DLU-0512-SP-STB-C/C-K-T-0	DLU-0512-SP-STB-C/C-K-T-H
DLU-0514-SP-STB-O/O-K-T-0	DLU-0514-SP-STB-O/O-K-T-H	DLU-0514-SP-STB-O/C-K-T-0	DLU-0514-SP-STB-O/C-K-T-H	DLU-0514-SP-STB-C/C-K-T-0	DLU-0514-SP-STB-C/C-K-T-H
DLU-0516-SP-STB-O/O-K-T-0	DLU-0516-SP-STB-O/O-K-T-H	DLU-0516-SP-STB-O/C-K-T-0	DLU-0516-SP-STB-O/C-K-T-H	DLU-0516-SP-STB-C/C-K-T-0	DLU-0516-SP-STB-C/C-K-T-H
DLU-0518-SP-STB-O/O-K-T-0	DLU-0518-SP-STB-O/O-K-T-H	DLU-0518-SP-STB-O/C-K-T-0	DLU-0518-SP-STB-O/C-K-T-H	DLU-0518-SP-STB-C/C-K-T-0	DLU-0518-SP-STB-C/C-K-T-H
DLU-0520-SP-STB-O/O-K-T-0	DLU-0520-SP-STB-O/O-K-T-H	DLU-0520-SP-STB-O/C-K-T-0	DLU-0520-SP-STB-O/C-K-T-H	DLU-0520-SP-STB-C/C-K-T-0	DLU-0520-SP-STB-C/C-K-T-H
DLU-0522-SP-STB-O/O-K-T-0	DLU-0522-SP-STB-O/O-K-T-H	DLU-0522-SP-STB-O/C-K-T-0	DLU-0522-SP-STB-O/C-K-T-H	DLU-0522-SP-STB-C/C-K-T-0	DLU-0522-SP-STB-C/C-K-T-H
DLU-0524-SP-STB-O/O-K-T-0	DLU-0524-SP-STB-O/O-K-T-H	DLU-0524-SP-STB-O/C-K-T-0	DLU-0524-SP-STB-O/C-K-T-H	DLU-0524-SP-STB-C/C-K-T-0	DLU-0524-SP-STB-C/C-K-T-H
DLU-0526-SP-STB-O/O-K-T-0	DLU-0526-SP-STB-O/O-K-T-H	DLU-0526-SP-STB-O/C-K-T-0	DLU-0526-SP-STB-O/C-K-T-H	DLU-0526-SP-STB-C/C-K-T-0	DLU-0526-SP-STB-C/C-K-T-H
DLU-0528-SP-STB-O/O-K-T-0	DLU-0528-SP-STB-O/O-K-T-H	DLU-0528-SP-STB-O/C-K-T-0	DLU-0528-SP-STB-O/C-K-T-H	DLU-0528-SP-STB-C/C-K-T-0	DLU-0528-SP-STB-C/C-K-T-H
DLU-0530-SP-STB-O/O-K-T-0	DLU-0530-SP-STB-O/O-K-T-H	DLU-0530-SP-STB-O/C-K-T-0	DLU-0530-SP-STB-O/C-K-T-H	DLU-0530-SP-STB-C/C-K-T-0	DLU-0530-SP-STB-C/C-K-T-H
DOUBLE LOOP STENT,05Fr COAXIAL PUSHER,SHORT TERM BLUE,OPEN/OPEN, NO COATING	DOUBLE LOOP STENT,05Fr COAXIAL PUSHER,SHORT TERM BLUE,OPEN/OPEN, HYDROPHYLIC COATING	DOUBLE LOOP STENT,05Fr COAXIAL PUSHER,SHORT TERM BLUE,OPEN/CLOSE, NO COATING	DOUBLE LOOP STENT,05Fr COAXIAL PUSHER,SHORT TERM BLUE,OPEN/CLOSE, HYDROPHYLIC COATING	DOUBLE LOOP STENT,05Fr COAXIAL PUSHER,SHORT TERM BLUE,CLOSE/CLOSE, NO COATING	DOUBLE LOOP STENT,05Fr COAXIAL PUSHER,SHORT TERM BLUE,CLOSE/CLOSE, HYDROPHYLIC COATING
DLU-0512-CP-STB-O/O-K-T-0	DLU-0512-CP-STB-O/O-K-T-H	DLU-0512-CP-STB-O/C-K-T-0	DLU-0512-CP-STB-O/C-K-T-H	DLU-0512-CP-STB-C/C-K-T-0	DLU-0512-CP-STB-C/C-K-T-H
DLU-0514-CP-STB-O/O-K-T-0	DLU-0514-CP-STB-O/O-K-T-H	DLU-0514-CP-STB-O/C-K-T-0	DLU-0514-CP-STB-O/C-K-T-H	DLU-0514-CP-STB-C/C-K-T-0	DLU-0514-CP-STB-C/C-K-T-H
DLU-0516-CP-STB-O/O-K-T-0	DLU-0516-CP-STB-O/O-K-T-H	DLU-0516-CP-STB-O/C-K-T-0	DLU-0516-CP-STB-O/C-K-T-H	DLU-0516-CP-STB-C/C-K-T-0	DLU-0516-CP-STB-C/C-K-T-H
DLU-0518-CP-STB-O/O-K-T-0	DLU-0518-CP-STB-O/O-K-T-H	DLU-0518-CP-STB-O/C-K-T-0	DLU-0518-CP-STB-O/C-K-T-H	DLU-0518-CP-STB-C/C-K-T-0	DLU-0518-CP-STB-C/C-K-T-H
DLU-0520-CP-STB-O/O-K-T-0	DLU-0520-CP-STB-O/O-K-T-H	DLU-0520-CP-STB-O/C-K-T-0	DLU-0520-CP-STB-O/C-K-T-H	DLU-0520-CP-STB-C/C-K-T-0	DLU-0520-CP-STB-C/C-K-T-H
DLU-0522-CP-STB-O/O-K-T-0	DLU-0522-CP-STB-O/O-K-T-H	DLU-0522-CP-STB-O/C-K-T-0	DLU-0522-CP-STB-O/C-K-T-H	DLU-0522-CP-STB-C/C-K-T-0	DLU-0522-CP-STB-C/C-K-T-H
DLU-0524-CP-STB-O/O-K-T-0	DLU-0524-CP-STB-O/O-K-T-H	DLU-0524-CP-STB-O/C-K-T-0	DLU-0524-CP-STB-O/C-K-T-H	DLU-0524-CP-STB-C/C-K-T-0	DLU-0524-CP-STB-C/C-K-T-H
DLU-0526-CP-STB-O/O-K-T-0	DLU-0526-CP-STB-O/O-K-T-H	DLU-0526-CP-STB-O/C-K-T-0	DLU-0526-CP-STB-O/C-K-T-H	DLU-0526-CP-STB-C/C-K-T-0	DLU-0526-CP-STB-C/C-K-T-H
DLU-0528-CP-STB-O/O-K-T-0	DLU-0528-CP-STB-O/O-K-T-H	DLU-0528-CP-STB-O/C-K-T-0	DLU-0528-CP-STB-O/C-K-T-H	DLU-0528-CP-STB-C/C-K-T-0	DLU-0528-CP-STB-C/C-K-T-H
DLU-0530-CP-STB-O/O-K-T-0	DLU-0530-CP-STB-O/O-K-T-H	DLU-0530-CP-STB-O/C-K-T-0	DLU-0530-CP-STB-O/C-K-T-H	DLU-0530-CP-STB-C/C-K-T-0	DLU-0530-CP-STB-C/C-K-T-H



DOUBLE LOOP STENT 06 FR SHORT TERM

DOUBLE LOOP STENT,06Fr SIMPLE PUSHER,SHORT TERM BLUE,OPEN/OPEN, NO COATING	DOUBLE LOOP STENT,06Fr SIMPLE PUSHER,SHORT TERM BLUE,OPEN/OPEN, HYDROPHYLIC COATING	DOUBLE LOOP STENT,06Fr SIMPLE PUSHER,SHORT TERM BLUE,OPEN/CLOSE, NO COATING	DOUBLE LOOP STENT,06Fr SIMPLE PUSHER,SHORT TERM BLUE,OPEN/CLOSE, HYDROPHYLIC COATING	DOUBLE LOOP STENT,06Fr SIMPLE PUSHER,SHORT TERM BLUE,CLOSE/CLOSE, NO COATING	DOUBLE LOOP STENT,06Fr SIMPLE PUSHER,SHORT TERM BLUE,CLOSE/CLOSE, HYDROPHYLIC COATING
DLU-0612-SP-STB-O/O-K-T-0	DLU-0612-SP-STB-O/O-K-T-H	DLU-0612-SP-STB-O/C-K-T-0	DLU-0612-SP-STB-O/C-K-T-H	DLU-0612-SP-STB-C/C-K-T-0	DLU-0612-SP-STB-C/C-K-T-H
DLU-0614-SP-STB-O/O-K-T-0	DLU-0614-SP-STB-O/O-K-T-H	DLU-0614-SP-STB-O/C-K-T-0	DLU-0614-SP-STB-O/C-K-T-H	DLU-0614-SP-STB-C/C-K-T-0	DLU-0614-SP-STB-C/C-K-T-H
DLU-0616-SP-STB-O/O-K-T-0	DLU-0616-SP-STB-O/O-K-T-H	DLU-0616-SP-STB-O/C-K-T-0	DLU-0616-SP-STB-O/C-K-T-H	DLU-0616-SP-STB-C/C-K-T-0	DLU-0616-SP-STB-C/C-K-T-H
DLU-0618-SP-STB-O/O-K-T-0	DLU-0618-SP-STB-O/O-K-T-H	DLU-0618-SP-STB-O/C-K-T-0	DLU-0618-SP-STB-O/C-K-T-H	DLU-0618-SP-STB-C/C-K-T-0	DLU-0618-SP-STB-C/C-K-T-H
DLU-0620-SP-STB-O/O-K-T-0	DLU-0620-SP-STB-O/O-K-T-H	DLU-0620-SP-STB-O/C-K-T-0	DLU-0620-SP-STB-O/C-K-T-H	DLU-0620-SP-STB-C/C-K-T-0	DLU-0620-SP-STB-C/C-K-T-H
DLU-0622-SP-STB-O/O-K-T-0	DLU-0622-SP-STB-O/O-K-T-H	DLU-0622-SP-STB-O/C-K-T-0	DLU-0622-SP-STB-O/C-K-T-H	DLU-0622-SP-STB-C/C-K-T-0	DLU-0622-SP-STB-C/C-K-T-H
DLU-0624-SP-STB-O/O-K-T-0	DLU-0624-SP-STB-O/O-K-T-H	DLU-0624-SP-STB-O/C-K-T-0	DLU-0624-SP-STB-O/C-K-T-H	DLU-0624-SP-STB-C/C-K-T-0	DLU-0624-SP-STB-C/C-K-T-H
DLU-0626-SP-STB-O/O-K-T-0	DLU-0626-SP-STB-O/O-K-T-H	DLU-0626-SP-STB-O/C-K-T-0	DLU-0626-SP-STB-O/C-K-T-H	DLU-0626-SP-STB-C/C-K-T-0	DLU-0626-SP-STB-C/C-K-T-H
DLU-0628-SP-STB-O/O-K-T-0	DLU-0628-SP-STB-O/O-K-T-H	DLU-0628-SP-STB-O/C-K-T-0	DLU-0628-SP-STB-O/C-K-T-H	DLU-0628-SP-STB-C/C-K-T-0	DLU-0628-SP-STB-C/C-K-T-H
DLU-0630-SP-STB-O/O-K-T-0	DLU-0630-SP-STB-O/O-K-T-H	DLU-0630-SP-STB-O/C-K-T-0	DLU-0630-SP-STB-O/C-K-T-H	DLU-0630-SP-STB-C/C-K-T-0	DLU-0630-SP-STB-C/C-K-T-H
DOUBLE LOOP STENT,06Fr COAXIAL PUSHER,SHORT TERM BLUE,OPEN/OPEN, NO COATING	DOUBLE LOOP STENT,06Fr COAXIAL PUSHER,SHORT TERM BLUE,OPEN/OPEN, HYDROPHYLIC COATING	DOUBLE LOOP STENT,06Fr COAXIAL PUSHER,SHORT TERM BLUE,OPEN/CLOSE, NO COATING	DOUBLE LOOP STENT,06Fr COAXIAL PUSHER,SHORT TERM BLUE,OPEN/CLOSE, HYDROPHYLIC COATING	DOUBLE LOOP STENT,06Fr COAXIAL PUSHER,SHORT TERM BLUE,CLOSE/CLOSE, NO COATING	DOUBLE LOOP STENT,06Fr COAXIAL PUSHER,SHORT TERM BLUE,CLOSE/CLOSE, HYDROPHYLIC COATING
DLU-0612-CP-STB-O/O-K-T-0	DLU-0612-CP-STB-O/O-K-T-H	DLU-0612-CP-STB-O/C-K-T-0	DLU-0612-CP-STB-O/C-K-T-H	DLU-0612-CP-STB-C/C-K-T-0	DLU-0612-CP-STB-C/C-K-T-H
DLU-0614-CP-STB-O/O-K-T-0	DLU-0614-CP-STB-O/O-K-T-H	DLU-0614-CP-STB-O/C-K-T-0	DLU-0614-CP-STB-O/C-K-T-H	DLU-0614-CP-STB-C/C-K-T-0	DLU-0614-CP-STB-C/C-K-T-H
DLU-0616-CP-STB-O/O-K-T-0	DLU-0616-CP-STB-O/O-K-T-H	DLU-0616-CP-STB-O/C-K-T-0	DLU-0616-CP-STB-O/C-K-T-H	DLU-0616-CP-STB-C/C-K-T-0	DLU-0616-CP-STB-C/C-K-T-H
DLU-0618-CP-STB-O/O-K-T-0	DLU-0618-CP-STB-O/O-K-T-H	DLU-0618-CP-STB-O/C-K-T-0	DLU-0618-CP-STB-O/C-K-T-H	DLU-0618-CP-STB-C/C-K-T-0	DLU-0618-CP-STB-C/C-K-T-H
DLU-0620-CP-STB-O/O-K-T-0	DLU-0620-CP-STB-O/O-K-T-H	DLU-0620-CP-STB-O/C-K-T-0	DLU-0620-CP-STB-O/C-K-T-H	DLU-0620-CP-STB-C/C-K-T-0	DLU-0620-CP-STB-C/C-K-T-H
DLU-0622-CP-STB-O/O-K-T-0	DLU-0622-CP-STB-O/O-K-T-H	DLU-0622-CP-STB-O/C-K-T-0	DLU-0622-CP-STB-O/C-K-T-H	DLU-0622-CP-STB-C/C-K-T-0	DLU-0622-CP-STB-C/C-K-T-H
DLU-0624-CP-STB-O/O-K-T-0	DLU-0624-CP-STB-O/O-K-T-H	DLU-0624-CP-STB-O/C-K-T-0	DLU-0624-CP-STB-O/C-K-T-H	DLU-0624-CP-STB-C/C-K-T-0	DLU-0624-CP-STB-C/C-K-T-H
DLU-0626-CP-STB-O/O-K-T-0	DLU-0626-CP-STB-O/O-K-T-H	DLU-0626-CP-STB-O/C-K-T-0	DLU-0626-CP-STB-O/C-K-T-H	DLU-0626-CP-STB-C/C-K-T-0	DLU-0626-CP-STB-C/C-K-T-H
DLU-0628-CP-STB-O/O-K-T-0	DLU-0628-CP-STB-O/O-K-T-H	DLU-0628-CP-STB-O/C-K-T-0	DLU-0628-CP-STB-O/C-K-T-H	DLU-0628-CP-STB-C/C-K-T-0	DLU-0628-CP-STB-C/C-K-T-H
DLU-0630-CP-STB-O/O-K-T-0	DLU-0630-CP-STB-O/O-K-T-H	DLU-0630-CP-STB-O/C-K-T-0	DLU-0630-CP-STB-O/C-K-T-H	DLU-0630-CP-STB-C/C-K-T-0	DLU-0630-CP-STB-C/C-K-T-H



ORDERING INFORMATION

DOUBLE LOOP STENT 07 FR SHORT TERM

DOUBLE LOOP STENT,07Fr SIMPLE PUSHER,SHORT TERM BLUE.OPEN/OPEN. NO COATING	DOUBLE LOOP STENT,07Fr SIMPLE PUSHER,SHORT TERM BLUE.OPEN/OPEN. HYDROPHYLIC COATING	DOUBLE LOOP STENT,07Fr SIMPLE PUSHER,SHORT TERM BLUE.OPEN/CLOSE. NO COATING	DOUBLE LOOP STENT,07Fr SIMPLE PUSHER,SHORT TERM BLUE.OPEN/CLOSE. HYDROPHYLIC COATING	DOUBLE LOOP STENT,07Fr SIMPLE PUSHER,SHORT TERM BLUE.CLOSE/CLOSE. NO COATING	DOUBLE LOOP STENT,07Fr SIMPLE PUSHER,SHORT TERM BLUE.CLOSE/CLOSE. HYDROPHYLIC COATING
DLU-0712-SP-STB-O/O-K-T-0	DLU-0712-SP-STB-O/O-K-T-H	DLU-0712-SP-STB-O/C-K-T-0	DLU-0712-SP-STB-O/C-K-T-H	DLU-0712-SP-STB-C/C-K-T-0	DLU-0712-SP-STB-C/C-K-T-H
DLU-0714-SP-STB-O/O-K-T-0	DLU-0714-SP-STB-O/O-K-T-H	DLU-0714-SP-STB-O/C-K-T-0	DLU-0714-SP-STB-O/C-K-T-H	DLU-0714-SP-STB-C/C-K-T-0	DLU-0714-SP-STB-C/C-K-T-H
DLU-0716-SP-STB-O/O-K-T-0	DLU-0716-SP-STB-O/O-K-T-H	DLU-0716-SP-STB-O/C-K-T-0	DLU-0716-SP-STB-O/C-K-T-H	DLU-0716-SP-STB-C/C-K-T-0	DLU-0716-SP-STB-C/C-K-T-H
DLU-0718-SP-STB-O/O-K-T-0	DLU-0718-SP-STB-O/O-K-T-H	DLU-0718-SP-STB-O/C-K-T-0	DLU-0718-SP-STB-O/C-K-T-H	DLU-0718-SP-STB-C/C-K-T-0	DLU-0718-SP-STB-C/C-K-T-H
DLU-0720-SP-STB-O/O-K-T-0	DLU-0720-SP-STB-O/O-K-T-H	DLU-0720-SP-STB-O/C-K-T-0	DLU-0720-SP-STB-O/C-K-T-H	DLU-0720-SP-STB-C/C-K-T-0	DLU-0720-SP-STB-C/C-K-T-H
DLU-0722-SP-STB-O/O-K-T-0	DLU-0722-SP-STB-O/O-K-T-H	DLU-0722-SP-STB-O/C-K-T-0	DLU-0722-SP-STB-O/C-K-T-H	DLU-0722-SP-STB-C/C-K-T-0	DLU-0722-SP-STB-C/C-K-T-H
DLU-0724-SP-STB-O/O-K-T-0	DLU-0724-SP-STB-O/O-K-T-H	DLU-0724-SP-STB-O/C-K-T-0	DLU-0724-SP-STB-O/C-K-T-H	DLU-0724-SP-STB-C/C-K-T-0	DLU-0724-SP-STB-C/C-K-T-H
DLU-0726-SP-STB-O/O-K-T-0	DLU-0726-SP-STB-O/O-K-T-H	DLU-0726-SP-STB-O/C-K-T-0	DLU-0726-SP-STB-O/C-K-T-H	DLU-0726-SP-STB-C/C-K-T-0	DLU-0726-SP-STB-C/C-K-T-H
DLU-0728-SP-STB-O/O-K-T-0	DLU-0728-SP-STB-O/O-K-T-H	DLU-0728-SP-STB-O/C-K-T-0	DLU-0728-SP-STB-O/C-K-T-H	DLU-0728-SP-STB-C/C-K-T-0	DLU-0728-SP-STB-C/C-K-T-H
DLU-0730-SP-STB-O/O-K-T-0	DLU-0730-SP-STB-O/O-K-T-H	DLU-0730-SP-STB-O/C-K-T-0	DLU-0730-SP-STB-O/C-K-T-H	DLU-0730-SP-STB-C/C-K-T-0	DLU-0730-SP-STB-C/C-K-T-H
DOUBLE LOOP STENT,07Fr COAXIAL PUSHER,SHORT TERM BLUE,OPEN/OPEN, NO COATING	DOUBLE LOOP STENT,07Fr COAXIAL PUSHER,SHORT TERM BLUE,OPEN/OPEN, HYDROPHYLIC COATING	DOUBLE LOOP STENT,07Fr COAXIAL PUSHER,SHORT TERM BLUE,OPEN/CLOSE, NO COATING	DOUBLE LOOP STENT,07Fr COAXIAL PUSHER,SHORT TERM BLUE,OPEN/CLOSE, HYDROPHYLIC COATING	DOUBLE LOOP STENT,07Fr COAXIAL PUSHER,SHORT TERM BLUE,CLOSE/CLOSE, NO COATING	DOUBLE LOOP STENT,07Fr COAXIAL PUSHER,SHORT TERM BLUE,CLOSE/CLOSE, HYDROPHYLIC COATING
DLU-0712-CP-STB-O/O-K-T-0	DLU-0712-CP-STB-O/O-K-T-H	DLU-0712-CP-STB-O/C-K-T-0	DLU-0712-CP-STB-O/C-K-T-H	DLU-0712-CP-STB-C/C-K-T-0	DLU-0712-CP-STB-C/C-K-T-H
DLU-0714-CP-STB-O/O-K-T-0	DLU-0714-CP-STB-O/O-K-T-H	DLU-0714-CP-STB-O/C-K-T-0	DLU-0714-CP-STB-O/C-K-T-H	DLU-0714-CP-STB-C/C-K-T-0	DLU-0714-CP-STB-C/C-K-T-H
DLU-0716-CP-STB-O/O-K-T-0	DLU-0716-CP-STB-O/O-K-T-H	DLU-0716-CP-STB-O/C-K-T-0	DLU-0716-CP-STB-O/C-K-T-H	DLU-0716-CP-STB-C/C-K-T-0	DLU-0716-CP-STB-C/C-K-T-H
DLU-0718-CP-STB-O/O-K-T-0	DLU-0718-CP-STB-O/O-K-T-H	DLU-0718-CP-STB-O/C-K-T-0	DLU-0718-CP-STB-O/C-K-T-H	DLU-0718-CP-STB-C/C-K-T-0	DLU-0718-CP-STB-C/C-K-T-H
DLU-0720-CP-STB-O/O-K-T-0	DLU-0720-CP-STB-O/O-K-T-H	DLU-0720-CP-STB-O/C-K-T-0	DLU-0720-CP-STB-O/C-K-T-H	DLU-0720-CP-STB-C/C-K-T-0	DLU-0720-CP-STB-C/C-K-T-H
DLU-0722-CP-STB-O/O-K-T-0	DLU-0722-CP-STB-O/O-K-T-H	DLU-0722-CP-STB-O/C-K-T-0	DLU-0722-CP-STB-O/C-K-T-H	DLU-0722-CP-STB-C/C-K-T-0	DLU-0722-CP-STB-C/C-K-T-H
DLU-0724-CP-STB-O/O-K-T-0	DLU-0724-CP-STB-O/O-K-T-H	DLU-0724-CP-STB-O/C-K-T-0	DLU-0724-CP-STB-O/C-K-T-H	DLU-0724-CP-STB-C/C-K-T-0	DLU-0724-CP-STB-C/C-K-T-H
DLU-0726-CP-STB-O/O-K-T-0	DLU-0726-CP-STB-O/O-K-T-H	DLU-0726-CP-STB-O/C-K-T-0	DLU-0726-CP-STB-O/C-K-T-H	DLU-0726-CP-STB-C/C-K-T-0	DLU-0726-CP-STB-C/C-K-T-H
DLU-0728-CP-STB-O/O-K-T-0	DLU-0728-CP-STB-O/O-K-T-H	DLU-0728-CP-STB-O/C-K-T-0	DLU-0728-CP-STB-O/C-K-T-H	DLU-0728-CP-STB-C/C-K-T-0	DLU-0728-CP-STB-C/C-K-T-H
DLU-0730-CP-STB-O/O-K-T-0	DLU-0730-CP-STB-O/O-K-T-H	DLU-0730-CP-STB-O/C-K-T-0	DLU-0730-CP-STB-O/C-K-T-H	DLU-0730-CP-STB-C/C-K-T-0	DLU-0730-CP-STB-C/C-K-T-H



DOUBLE LOOP STENT 08 FR SHORT TERM

DOUBLE LOOP STENT,08Fr SIMPLE PUSHER,SHORT TERM BLUE,OPEN/OPEN, NO COATING	DOUBLE LOOP STENT,08Fr SIMPLE PUSHER,SHORT TERM BLUE,OPEN/OPEN, HYDROPHYLIC COATING	DOUBLE LOOP STENT,08Fr SIMPLE PUSHER,SHORT TERM BLUE,OPEN/CLOSE, NO COATING	DOUBLE LOOP STENT,08Fr SIMPLE PUSHER,SHORT TERM BLUE,OPEN/CLOSE, HYDROPHYLIC COATING	DOUBLE LOOP STENT,08Fr SIMPLE PUSHER,SHORT TERM BLUE,CLOSE/CLOSE, NO COATING	DOUBLE LOOP STENT,08Fr SIMPLE PUSHER,SHORT TERM BLUE,CLOSE/CLOSE, HYDROPHYLIC COATING
DLU-0812-SP-STB-O/O-K-T-0	DLU-0812-SP-STB-O/O-K-T-H	DLU-0812-SP-STB-O/C-K-T-0	DLU-0812-SP-STB-O/C-K-T-H	DLU-0812-SP-STB-C/C-K-T-0	DLU-0812-SP-STB-C/C-K-T-H
DLU-0814-SP-STB-O/O-K-T-0	DLU-0814-SP-STB-O/O-K-T-H	DLU-0814-SP-STB-O/C-K-T-0	DLU-0814-SP-STB-O/C-K-T-H	DLU-0814-SP-STB-C/C-K-T-0	DLU-0814-SP-STB-C/C-K-T-H
DLU-0816-SP-STB-O/O-K-T-0	DLU-0816-SP-STB-O/O-K-T-H	DLU-0816-SP-STB-O/C-K-T-0	DLU-0816-SP-STB-O/C-K-T-H	DLU-0816-SP-STB-C/C-K-T-0	DLU-0816-SP-STB-C/C-K-T-H
DLU-0818-SP-STB-O/O-K-T-0	DLU-0818-SP-STB-O/O-K-T-H	DLU-0818-SP-STB-O/C-K-T-0	DLU-0818-SP-STB-O/C-K-T-H	DLU-0818-SP-STB-C/C-K-T-0	DLU-0818-SP-STB-C/C-K-T-H
DLU-0820-SP-STB-O/O-K-T-0	DLU-0820-SP-STB-O/O-K-T-H	DLU-0820-SP-STB-O/C-K-T-0	DLU-0820-SP-STB-O/C-K-T-H	DLU-0820-SP-STB-C/C-K-T-0	DLU-0820-SP-STB-C/C-K-T-H
DLU-0822-SP-STB-O/O-K-T-0	DLU-0822-SP-STB-O/O-K-T-H	DLU-0822-SP-STB-O/C-K-T-0	DLU-0822-SP-STB-O/C-K-T-H	DLU-0822-SP-STB-C/C-K-T-0	DLU-0822-SP-STB-C/C-K-T-H
DLU-0824-SP-STB-O/O-K-T-0	DLU-0824-SP-STB-O/O-K-T-H	DLU-0824-SP-STB-O/C-K-T-0	DLU-0824-SP-STB-O/C-K-T-H	DLU-0824-SP-STB-C/C-K-T-0	DLU-0824-SP-STB-C/C-K-T-H
DLU-0826-SP-STB-O/O-K-T-0	DLU-0826-SP-STB-O/O-K-T-H	DLU-0826-SP-STB-O/C-K-T-0	DLU-0826-SP-STB-O/C-K-T-H	DLU-0826-SP-STB-C/C-K-T-0	DLU-0826-SP-STB-C/C-K-T-H
DLU-0828-SP-STB-O/O-K-T-0	DLU-0828-SP-STB-O/O-K-T-H	DLU-0828-SP-STB-O/C-K-T-0	DLU-0828-SP-STB-O/C-K-T-H	DLU-0828-SP-STB-C/C-K-T-0	DLU-0828-SP-STB-C/C-K-T-H
DLU-0830-SP-STB-O/O-K-T-0	DLU-0830-SP-STB-O/O-K-T-H	DLU-0830-SP-STB-O/C-K-T-0	DLU-0830-SP-STB-O/C-K-T-H	DLU-0830-SP-STB-C/C-K-T-0	DLU-0830-SP-STB-C/C-K-T-H
DOUBLE LOOP STENT,08Fr COAXIAL PUSHER,SHORT TERM BLUE,OPEN/OPEN, NO COATING	DOUBLE LOOP STENT,08Fr COAXIAL PUSHER,SHORT TERM BLUE,OPEN/OPEN, HYDROPHYLIC COATING	DOUBLE LOOP STENT,08Fr COAXIAL PUSHER,SHORT TERM BLUE,OPEN/CLOSE, NO COATING	DOUBLE LOOP STENT,08Fr COAXIAL PUSHER,SHORT TERM BLUE,OPEN/CLOSE, HYDROPHYLIC COATING	DOUBLE LOOP STENT,08Fr COAXIAL PUSHER,SHORT TERM BLUE,CLOSE/CLOSE, NO COATING	DOUBLE LOOP STENT,08Fr COAXIAL PUSHER,SHORT TERM BLUE,CLOSE/CLOSE, HYDROPHYLIC COATING
DLU-0812-CP-STB-O/O-K-T-0	DLU-0812-CP-STB-O/O-K-T-H	DLU-0812-CP-STB-O/C-K-T-0	DLU-0812-CP-STB-O/C-K-T-H	DLU-0812-CP-STB-C/C-K-T-0	DLU-0812-CP-STB-C/C-K-T-H
DLU-0814-CP-STB-O/O-K-T-0	DLU-0814-CP-STB-O/O-K-T-H	DLU-0814-CP-STB-O/C-K-T-0	DLU-0814-CP-STB-O/C-K-T-H	DLU-0814-CP-STB-C/C-K-T-0	DLU-0814-CP-STB-C/C-K-T-H
DLU-0816-CP-STB-O/O-K-T-0	DLU-0816-CP-STB-O/O-K-T-H	DLU-0816-CP-STB-O/C-K-T-0	DLU-0816-CP-STB-O/C-K-T-H	DLU-0816-CP-STB-C/C-K-T-0	DLU-0816-CP-STB-C/C-K-T-H
DLU-0818-CP-STB-O/O-K-T-0	DLU-0818-CP-STB-O/O-K-T-H	DLU-0818-CP-STB-O/C-K-T-0	DLU-0818-CP-STB-O/C-K-T-H	DLU-0818-CP-STB-C/C-K-T-0	DLU-0818-CP-STB-C/C-K-T-H
DLU-0820-CP-STB-O/O-K-T-0	DLU-0820-CP-STB-O/O-K-T-H	DLU-0820-CP-STB-O/C-K-T-0	DLU-0820-CP-STB-O/C-K-T-H	DLU-0820-CP-STB-C/C-K-T-0	DLU-0820-CP-STB-C/C-K-T-H
DLU-0822-CP-STB-O/O-K-T-0	DLU-0822-CP-STB-O/O-K-T-H	DLU-0822-CP-STB-O/C-K-T-0	DLU-0822-CP-STB-O/C-K-T-H	DLU-0822-CP-STB-C/C-K-T-0	DLU-0822-CP-STB-C/C-K-T-H
DLU-0824-CP-STB-O/O-K-T-0	DLU-0824-CP-STB-O/O-K-T-H	DLU-0824-CP-STB-O/C-K-T-0	DLU-0824-CP-STB-O/C-K-T-H	DLU-0824-CP-STB-C/C-K-T-0	DLU-0824-CP-STB-C/C-K-T-H
DLU-0826-CP-STB-O/O-K-T-0	DLU-0826-CP-STB-O/O-K-T-H	DLU-0826-CP-STB-O/C-K-T-0	DLU-0826-CP-STB-O/C-K-T-H	DLU-0826-CP-STB-C/C-K-T-0	DLU-0826-CP-STB-C/C-K-T-H
DLU-0828-CP-STB-O/O-K-T-0	DLU-0828-CP-STB-O/O-K-T-H	DLU-0828-CP-STB-O/C-K-T-0	DLU-0828-CP-STB-O/C-K-T-H	DLU-0828-CP-STB-C/C-K-T-0	DLU-0828-CP-STB-C/C-K-T-H
DLU-0830-CP-STB-O/O-K-T-0	DLU-0830-CP-STB-O/O-K-T-H	DLU-0830-CP-STB-O/C-K-T-0	DLU-0830-CP-STB-O/C-K-T-H	DLU-0830-CP-STB-C/C-K-T-0	DLU-0830-CP-STB-C/C-K-T-H



ORDERING INFORMATION

Double Loop Stents Long term

DOUBLE LOOP STENT 03 FR LONG TERM

Table with 6 columns: DOUBLE LOOP STENT,03Fr SIMPLE PUSHER, LONG TERM WHITE, OPEN/OPEN, NO COATING; DOUBLE LOOP STENT,03Fr SIMPLE PUSHER, LONG TERM WHITE, OPEN/OPEN, HYDROPHYLIC COATING; DOUBLE LOOP STENT,03Fr SIMPLE PUSHER, LONG TERM WHITE, OPEN/CLOSE, NO COATING; DOUBLE LOOP STENT,03Fr SIMPLE PUSHER, LONG TERM WHITE, OPEN/CLOSE, HYDROPHYLIC COATING; DOUBLE LOOP STENT,03Fr SIMPLE PUSHER, LONG TERM WHITE, CLOSE/CLOSE, NO COATING; DOUBLE LOOP STENT,03Fr SIMPLE PUSHER, LONG TERM WHITE, CLOSE/CLOSE, HYDROPHYLIC COATING. Rows include product codes like DLU-0312-SP-LTW-O/O-K-T-0.

DOUBLE LOOP STENT 03.6 FR LONG TERM

Table with 6 columns: DOUBLE LOOP STENT,03.6Fr SIMPLE PUSHER, LONG TERM WHITE, OPEN/OPEN, NO COATING; DOUBLE LOOP STENT,03.6Fr SIMPLE PUSHER, LONG TERM WHITE, OPEN/OPEN, HYDROPHYLIC COATING; DOUBLE LOOP STENT,03.6Fr SIMPLE PUSHER, LONG TERM WHITE, OPEN/CLOSE, NO COATING; DOUBLE LOOP STENT,03.6Fr SIMPLE PUSHER, LONG TERM WHITE, OPEN/CLOSE, HYDROPHYLIC COATING; DOUBLE LOOP STENT,03.6Fr SIMPLE PUSHER, LONG TERM WHITE, CLOSE/CLOSE, NO COATING; DOUBLE LOOP STENT,03.6Fr SIMPLE PUSHER, LONG TERM WHITE, CLOSE/CLOSE, HYDROPHYLIC COATING. Rows include product codes like DLU-0312(6)-SP-LTW-O/O-K-T-0.

DOUBLE LOOP STENT 04 FR LONG TERM

Table with 6 columns: DOUBLE LOOP STENT,04Fr SIMPLE PUSHER, LONG TERM WHITE, OPEN/OPEN, NO COATING; DOUBLE LOOP STENT,04Fr SIMPLE PUSHER, LONG TERM WHITE, OPEN/OPEN, HYDROPHYLIC COATING; DOUBLE LOOP STENT,04Fr SIMPLE PUSHER, LONG TERM WHITE, OPEN/CLOSE, NO COATING; DOUBLE LOOP STENT,04Fr SIMPLE PUSHER, LONG TERM WHITE, OPEN/CLOSE, HYDROPHYLIC COATING; DOUBLE LOOP STENT,04Fr SIMPLE PUSHER, LONG TERM WHITE, CLOSE/CLOSE, NO COATING; DOUBLE LOOP STENT,04Fr SIMPLE PUSHER, LONG TERM WHITE, CLOSE/CLOSE, HYDROPHYLIC COATING. Rows include product codes like DLU-0412-SP-LTW-O/O-K-T-0.



DOUBLE LOOP STENT 04.7 FR LONG TERM

DOUBLE LOOP STENT,04.7Fr SIMPLE PUSHER, LONG TERM WHITE, OPEN/OPEN, NO COATING	DOUBLE LOOP STENT,04.7Fr SIMPLE PUSHER, LONG TERM WHITE, OPEN/OPEN, HYDROPHYLIC COATING	DOUBLE LOOP STENT,04.7Fr SIMPLE PUSHER, LONG TERM WHITE, OPEN/CLOSE, NO COATING	DOUBLE LOOP STENT,04.7Fr SIMPLE PUSHER, LONG TERM WHITE, OPEN/CLOSE, HYDROPHYLIC COATING	DOUBLE LOOP STENT,04.7Fr SIMPLE PUSHER, LONG TERM WHITE, CLOSE/CLOSE, NO COATING	DOUBLE LOOP STENT,04.7Fr SIMPLE PUSHER, LONG TERM WHITE, CLOSE/CLOSE, HYDROPHYLIC COATING
DLU-0412(7)-SP-LTW-O/O-K-T-0	DLU-0412(7)-SP-LTW-O/O-K-T-H	DLU-0412(7)-SP-LTW-O/C-K-T-0	DLU-0412(7)-SP-LTW-O/C-K-T-H	DLU-0412(7)-SP-LTW-C/C-K-T-0	DLU-0412(7)-SP-LTW-C/C-K-T-H
DLU-0414(7)-SP-LTW-O/O-K-T-0	DLU-0414(7)-SP-LTW-O/O-K-T-H	DLU-0414(7)-SP-LTW-O/C-K-T-0	DLU-0414(7)-SP-LTW-O/C-K-T-H	DLU-0414(7)-SP-LTW-C/C-K-T-0	DLU-0414(7)-SP-LTW-C/C-K-T-H
DLU-0416(7)-SP-LTW-O/O-K-T-0	DLU-0416(7)-SP-LTW-O/O-K-T-H	DLU-0416(7)-SP-LTW-O/C-K-T-0	DLU-0416(7)-SP-LTW-O/C-K-T-H	DLU-0416(7)-SP-LTW-C/C-K-T-0	DLU-0416(7)-SP-LTW-C/C-K-T-H
DLU-0418(7)-SP-LTW-O/O-K-T-0	DLU-0418(7)-SP-LTW-O/O-K-T-H	DLU-0418(7)-SP-LTW-O/C-K-T-0	DLU-0418(7)-SP-LTW-O/C-K-T-H	DLU-0418(7)-SP-LTW-C/C-K-T-0	DLU-0418(7)-SP-LTW-C/C-K-T-H
DLU-0420(7)-SP-LTW-O/O-K-T-0	DLU-0420(7)-SP-LTW-O/O-K-T-H	DLU-0420(7)-SP-LTW-O/C-K-T-0	DLU-0420(7)-SP-LTW-O/C-K-T-H	DLU-0420(7)-SP-LTW-C/C-K-T-0	DLU-0420(7)-SP-LTW-C/C-K-T-H
DLU-0422(7)-SP-LTW-O/O-K-T-0	DLU-0422(7)-SP-LTW-O/O-K-T-H	DLU-0422(7)-SP-LTW-O/C-K-T-0	DLU-0422(7)-SP-LTW-O/C-K-T-H	DLU-0422(7)-SP-LTW-C/C-K-T-0	DLU-0422(7)-SP-LTW-C/C-K-T-H
DLU-0424(7)-SP-LTW-O/O-K-T-0	DLU-0424(7)-SP-LTW-O/O-K-T-H	DLU-0424(7)-SP-LTW-O/C-K-T-0	DLU-0424(7)-SP-LTW-O/C-K-T-H	DLU-0424(7)-SP-LTW-C/C-K-T-0	DLU-0424(7)-SP-LTW-C/C-K-T-H
DLU-0426(7)-SP-LTW-O/O-K-T-0	DLU-0426(7)-SP-LTW-O/O-K-T-H	DLU-0426(7)-SP-LTW-O/C-K-T-0	DLU-0426(7)-SP-LTW-O/C-K-T-H	DLU-0426(7)-SP-LTW-C/C-K-T-0	DLU-0426(7)-SP-LTW-C/C-K-T-H
DLU-0428(7)-SP-LTW-O/O-K-T-0	DLU-0428(7)-SP-LTW-O/O-K-T-H	DLU-0428(7)-SP-LTW-O/C-K-T-0	DLU-0428(7)-SP-LTW-O/C-K-T-H	DLU-0428(7)-SP-LTW-C/C-K-T-0	DLU-0428(7)-SP-LTW-C/C-K-T-H
DLU-0430(7)-SP-LTW-O/O-K-T-0	DLU-0430(7)-SP-LTW-O/O-K-T-H	DLU-0430(7)-SP-LTW-O/C-K-T-0	DLU-0430(7)-SP-LTW-O/C-K-T-H	DLU-0430(7)-SP-LTW-C/C-K-T-0	DLU-0430(7)-SP-LTW-C/C-K-T-H
DOUBLE LOOP STENT,04.7Fr COAXIAL PUSHER, LONG TERM WHITE, OPEN/OPEN, NO COATING	DOUBLE LOOP STENT,04.7Fr COAXIAL PUSHER, LONG TERM WHITE, OPEN/OPEN, HYDROPHYLIC COATING	DOUBLE LOOP STENT,04.7Fr COAXIAL PUSHER, LONG TERM WHITE, OPEN/CLOSE, NO COATING	DOUBLE LOOP STENT,04.7Fr COAXIAL PUSHER, LONG TERM WHITE, OPEN/CLOSE, HYDROPHYLIC COATING	DOUBLE LOOP STENT,04.7Fr COAXIAL PUSHER, LONG TERM WHITE, CLOSE/CLOSE, NO COATING	DOUBLE LOOP STENT,04.7Fr COAXIAL PUSHER, LONG TERM WHITE, CLOSE/CLOSE, HYDROPHYLIC COATING
DLU-0412(7)-CP-LTW-O/O-K-T-0	DLU-0412(7)-CP-LTW-O/O-K-T-H	DLU-0412(7)-CP-LTW-O/C-K-T-0	DLU-0412(7)-CP-LTW-O/C-K-T-H	DLU-0412(7)-CP-LTW-C/C-K-T-0	DLU-0412(7)-CP-LTW-C/C-K-T-H
DLU-0414(7)-CP-LTW-O/O-K-T-0	DLU-0414(7)-CP-LTW-O/O-K-T-H	DLU-0414(7)-CP-LTW-O/C-K-T-0	DLU-0414(7)-CP-LTW-O/C-K-T-H	DLU-0414(7)-CP-LTW-C/C-K-T-0	DLU-0414(7)-CP-LTW-C/C-K-T-H
DLU-0416(7)-CP-LTW-O/O-K-T-0	DLU-0416(7)-CP-LTW-O/O-K-T-H	DLU-0416(7)-CP-LTW-O/C-K-T-0	DLU-0416(7)-CP-LTW-O/C-K-T-H	DLU-0416(7)-CP-LTW-C/C-K-T-0	DLU-0416(7)-CP-LTW-C/C-K-T-H
DLU-0418(7)-CP-LTW-O/O-K-T-0	DLU-0418(7)-CP-LTW-O/O-K-T-H	DLU-0418(7)-CP-LTW-O/C-K-T-0	DLU-0418(7)-CP-LTW-O/C-K-T-H	DLU-0418(7)-CP-LTW-C/C-K-T-0	DLU-0418(7)-CP-LTW-C/C-K-T-H
DLU-0420(7)-CP-LTW-O/O-K-T-0	DLU-0420(7)-CP-LTW-O/O-K-T-H	DLU-0420(7)-CP-LTW-O/C-K-T-0	DLU-0420(7)-CP-LTW-O/C-K-T-H	DLU-0420(7)-CP-LTW-C/C-K-T-0	DLU-0420(7)-CP-LTW-C/C-K-T-H
DLU-0422(7)-CP-LTW-O/O-K-T-0	DLU-0422(7)-CP-LTW-O/O-K-T-H	DLU-0422(7)-CP-LTW-O/C-K-T-0	DLU-0422(7)-CP-LTW-O/C-K-T-H	DLU-0422(7)-CP-LTW-C/C-K-T-0	DLU-0422(7)-CP-LTW-C/C-K-T-H
DLU-0424(7)-CP-LTW-O/O-K-T-0	DLU-0424(7)-CP-LTW-O/O-K-T-H	DLU-0424(7)-CP-LTW-O/C-K-T-0	DLU-0424(7)-CP-LTW-O/C-K-T-H	DLU-0424(7)-CP-LTW-C/C-K-T-0	DLU-0424(7)-CP-LTW-C/C-K-T-H
DLU-0426(7)-CP-LTW-O/O-K-T-0	DLU-0426(7)-CP-LTW-O/O-K-T-H	DLU-0426(7)-CP-LTW-O/C-K-T-0	DLU-0426(7)-CP-LTW-O/C-K-T-H	DLU-0426(7)-CP-LTW-C/C-K-T-0	DLU-0426(7)-CP-LTW-C/C-K-T-H
DLU0428(7)-CP-LTW-O/O-K-T-0	DLU0428(7)-CP-LTW-O/O-K-T-H	DLU0428(7)-CP-LTW-O/C-K-T-0	DLU0428(7)-CP-LTW-O/C-K-T-H	DLU0428(7)-CP-LTW-C/C-K-T-0	DLU0428(7)-CP-LTW-C/C-K-T-H
DLU-0430(7)-CP-LTW-O/O-K-T-0	DLU-0430(7)-CP-LTW-O/O-K-T-H	DLU-0430(7)-CP-LTW-O/C-K-T-0	DLU-0430(7)-CP-LTW-O/C-K-T-H	DLU-0430(7)-CP-LTW-C/C-K-T-0	DLU-0430(7)-CP-LTW-C/C-K-T-H







ORDERING INFORMATION

DOUBLE LOOP STENT 08 FR LONG TERM

<b>DOUBLE LOOP STENT,08Fr SIMPLE PUSHER, LONG TERM WHITE, OPEN/OPEN, NO COATING</b>	<b>DOUBLE LOOP STENT,08Fr SIMPLE PUSHER, LONG TERM WHITE, OPEN/OPEN, HYDROPHYLIC COATING</b>	<b>DOUBLE LOOP STENT,08Fr SIMPLE PUSHER, LONG TERM WHITE, OPEN/CLOSE, NO COATING</b>	<b>DOUBLE LOOP STENT,08Fr SIMPLE PUSHER, LONG TERM WHITE, OPEN/CLOSE, HYDROPHYLIC COATING</b>	<b>DOUBLE LOOP STENT,08Fr SIMPLE PUSHER, LONG TERM WHITE, CLOSE/CLOSE, NO COATING</b>	<b>DOUBLE LOOP STENT,08Fr SIMPLE PUSHER, LONG TERM WHITE, CLOSE/CLOSE, HYDROPHYLIC COATING</b>
DLU-0812-SP-LTW-O/O-K-T-0	DLU-0812-SP-LTW-O/O-K-T-H	DLU-0812-SP-LTW-O/C-K-T-0	DLU-0812-SP-LTW-O/C-K-T-H	DLU-0812-SP-LTW-C/C-K-T-0	DLU-0812-SP-LTW-C/C-K-T-H
DLU-0814-SP-LTW-O/O-K-T-0	DLU-0814-SP-LTW-O/O-K-T-H	DLU-0814-SP-LTW-O/C-K-T-0	DLU-0814-SP-LTW-O/C-K-T-H	DLU-0814-SP-LTW-C/C-K-T-0	DLU-0814-SP-LTW-C/C-K-T-H
DLU-0816-SP-LTW-O/O-K-T-0	DLU-0816-SP-LTW-O/O-K-T-H	DLU-0816-SP-LTW-O/C-K-T-0	DLU-0816-SP-LTW-O/C-K-T-H	DLU-0816-SP-LTW-C/C-K-T-0	DLU-0816-SP-LTW-C/C-K-T-H
DLU-0818-SP-LTW-O/O-K-T-0	DLU-0818-SP-LTW-O/O-K-T-H	DLU-0818-SP-LTW-O/C-K-T-0	DLU-0818-SP-LTW-O/C-K-T-H	DLU-0818-SP-LTW-C/C-K-T-0	DLU-0818-SP-LTW-C/C-K-T-H
DLU-0820-SP-LTW-O/O-K-T-0	DLU-0820-SP-LTW-O/O-K-T-H	DLU-0820-SP-LTW-O/C-K-T-0	DLU-0820-SP-LTW-O/C-K-T-H	DLU-0820-SP-LTW-C/C-K-T-0	DLU-0820-SP-LTW-C/C-K-T-H
DLU-0822-SP-LTW-O/O-K-T-0	DLU-0822-SP-LTW-O/O-K-T-H	DLU-0822-SP-LTW-O/C-K-T-0	DLU-0822-SP-LTW-O/C-K-T-H	DLU-0822-SP-LTW-C/C-K-T-0	DLU-0822-SP-LTW-C/C-K-T-H
DLU-0824-SP-LTW-O/O-K-T-0	DLU-0824-SP-LTW-O/O-K-T-H	DLU-0824-SP-LTW-O/C-K-T-0	DLU-0824-SP-LTW-O/C-K-T-H	DLU-0824-SP-LTW-C/C-K-T-0	DLU-0824-SP-LTW-C/C-K-T-H
DLU-0826-SP-LTW-O/O-K-T-0	DLU-0826-SP-LTW-O/O-K-T-H	DLU-0826-SP-LTW-O/C-K-T-0	DLU-0826-SP-LTW-O/C-K-T-H	DLU-0826-SP-LTW-C/C-K-T-0	DLU-0826-SP-LTW-C/C-K-T-H
DLU-0828-SP-LTW-O/O-K-T-0	DLU-0828-SP-LTW-O/O-K-T-H	DLU-0828-SP-LTW-O/C-K-T-0	DLU-0828-SP-LTW-O/C-K-T-H	DLU-0828-SP-LTW-C/C-K-T-0	DLU-0828-SP-LTW-C/C-K-T-H
DLU-0830-SP-LTW-O/O-K-T-0	DLU-0830-SP-LTW-O/O-K-T-H	DLU-0830-SP-LTW-O/C-K-T-0	DLU-0830-SP-LTW-O/C-K-T-H	DLU-0830-SP-LTW-C/C-K-T-0	DLU-0830-SP-LTW-C/C-K-T-H
<b>DOUBLE LOOP STENT,08Fr COAXIAL PUSHER, LONG TERM WHITE, OPEN/OPEN, NO COATING</b>	<b>DOUBLE LOOP STENT,08Fr COAXIAL PUSHER, LONG TERM WHITE, OPEN/OPEN, HYDROPHYLIC COATING</b>	<b>DOUBLE LOOP STENT,08Fr COAXIAL PUSHER, LONG TERM WHITE, OPEN/CLOSE, NO COATING</b>	<b>DOUBLE LOOP STENT,08Fr COAXIAL PUSHER, LONG TERM WHITE, OPEN/CLOSE, HYDROPHYLIC COATING</b>	<b>DOUBLE LOOP STENT,08Fr COAXIAL PUSHER, LONG TERM WHITE, CLOSE/CLOSE, NO COATING</b>	<b>DOUBLE LOOP STENT,08Fr COAXIAL PUSHER, LONG TERM WHITE, CLOSE/CLOSE, HYDROPHYLIC COATING</b>
DLU-0812-CP-LTW-O/O-K-T-0	DLU-0812-CP-LTW-O/O-K-T-H	DLU-0812-CP-LTW-O/C-K-T-0	DLU-0812-CP-LTW-O/C-K-T-H	DLU-0812-CP-LTW-C/C-K-T-0	DLU-0812-CP-LTW-C/C-K-T-H
DLU-0814-CP-LTW-O/O-K-T-0	DLU-0814-CP-LTW-O/O-K-T-H	DLU-0814-CP-LTW-O/C-K-T-0	DLU-0814-CP-LTW-O/C-K-T-H	DLU-0814-CP-LTW-C/C-K-T-0	DLU-0814-CP-LTW-C/C-K-T-H
DLU-0816-CP-LTW-O/O-K-T-0	DLU-0816-CP-LTW-O/O-K-T-H	DLU-0816-CP-LTW-O/C-K-T-0	DLU-0816-CP-LTW-O/C-K-T-H	DLU-0816-CP-LTW-C/C-K-T-0	DLU-0816-CP-LTW-C/C-K-T-H
DLU-0818-CP-LTW-O/O-K-T-0	DLU-0818-CP-LTW-O/O-K-T-H	DLU-0818-CP-LTW-O/C-K-T-0	DLU-0818-CP-LTW-O/C-K-T-H	DLU-0818-CP-LTW-C/C-K-T-0	DLU-0818-CP-LTW-C/C-K-T-H
DLU-0820-CP-LTW-O/O-K-T-0	DLU-0820-CP-LTW-O/O-K-T-H	DLU-0820-CP-LTW-O/C-K-T-0	DLU-0820-CP-LTW-O/C-K-T-H	DLU-0820-CP-LTW-C/C-K-T-0	DLU-0820-CP-LTW-C/C-K-T-H
DLU-0822-CP-LTW-O/O-K-T-0	DLU-0822-CP-LTW-O/O-K-T-H	DLU-0822-CP-LTW-O/C-K-T-0	DLU-0822-CP-LTW-O/C-K-T-H	DLU-0822-CP-LTW-C/C-K-T-0	DLU-0822-CP-LTW-C/C-K-T-H
DLU-0824-CP-LTW-O/O-K-T-0	DLU-0824-CP-LTW-O/O-K-T-H	DLU-0824-CP-LTW-O/C-K-T-0	DLU-0824-CP-LTW-O/C-K-T-H	DLU-0824-CP-LTW-C/C-K-T-0	DLU-0824-CP-LTW-C/C-K-T-H
DLU-0826-CP-LTW-O/O-K-T-0	DLU-0826-CP-LTW-O/O-K-T-H	DLU-0826-CP-LTW-O/C-K-T-0	DLU-0826-CP-LTW-O/C-K-T-H	DLU-0826-CP-LTW-C/C-K-T-0	DLU-0826-CP-LTW-C/C-K-T-H
DLU-0828-CP-LTW-O/O-K-T-0	DLU-0828-CP-LTW-O/O-K-T-H	DLU-0828-CP-LTW-O/C-K-T-0	DLU-0828-CP-LTW-O/C-K-T-H	DLU-0828-CP-LTW-C/C-K-T-0	DLU-0828-CP-LTW-C/C-K-T-H
DLU-0830-CP-LTW-O/O-K-T-0	DLU-0830-CP-LTW-O/O-K-T-H	DLU-0830-CP-LTW-O/C-K-T-0	DLU-0830-CP-LTW-O/C-K-T-H	DLU-0830-CP-LTW-C/C-K-T-0	DLU-0830-CP-LTW-C/C-K-T-H



Double Loop Stent Multilength

ORDERING INFORMATION

DOUBLE LOOP STENT MULTILENGTH SHORT TERM

Table with 6 columns: Double Loop Stent, Simple Pusher, Short Term, Blue, Open/Open, No Coating; Double Loop Stent, Simple Pusher, Short Term, Blue, Open/Open, Hydrophilic Coating; Double Loop Stent, Simple Pusher, Short Term, Blue, Open/Close, No Coating; Double Loop Stent, Simple Pusher, Short Term, Blue, Open/Close, Hydrophilic Coating; Double Loop Stent, Simple Pusher, Short Term, Blue, Close/Close, No Coating; Double Loop Stent, Simple Pusher, Short Term, Blue, Close/Close, Hydrophilic Coating. Rows include models like DLU-03MM-SP-STB-O/O-K-T-0, DLU-04MM-SP-STB-O/O-K-T-0, etc.

DOUBLE LOOP STENT MULTILENGTH LONG TERM

Table with 6 columns: Double Loop Stent, Simple Pusher, Long Term, White, Open/Open, No Coating; Double Loop Stent, Simple Pusher, Long Term, White, Open/Open, Hydrophilic Coating; Double Loop Stent, Simple Pusher, Long Term, White, Open/Close, No Coating; Double Loop Stent, Simple Pusher, Long Term, White, Open/Close, Hydrophilic Coating; Double Loop Stent, Simple Pusher, Long Term, White, Close/Close, No Coating; Double Loop Stent, Simple Pusher, Long Term, White, Close/Close, Hydrophilic Coating. Rows include models like DLU-03MM-SP-LTW-O/O-K-T-0, DLU-04MM-SP-LTW-O/O-K-T-0, etc.



ORDERING INFORMATION

Soft Ureteric Catheters

SOFT URETERIC CATHETER UNCOATED

Table with 6 columns and 8 rows of catheter codes (UC-03-TO-Y-0 to UC-08-AO-Y-0)

SOFT URETERIC CATHETER HYDROPHILIC

Table with 6 columns and 8 rows of catheter codes (UC-03-TO-Y-H to UC-08-AO-Y-H)

Semi Soft Ureteric Catheters

SEMI SOFT URETERIC CATHETER UNCOATED

Table with 6 columns and 8 rows of catheter codes (UC-03-TO-W-0 to UC-08-AO-W-0)

SEMI SOFT URETERIC CATHETER HYDROPHILIC

Table with 6 columns and 8 rows of catheter codes (UC-03-TO-W-H to UC-08-AO-W-H)



Firm Ureteric Catheters

FIRM URETERIC CATHETER UNCOATED

UC-03-TO-B-0	UC-04-TO-B-0	UC-05-TO-B-0	UC-06-TO-B-0	UC-07-TO-B-0	UC-08-TO-B-0
UC-03-CL-B-0	UC-04-CL-B-0	UC-05-CL-B-0	UC-06-CL-B-0	UC-07-CL-B-0	UC-08-CL-B-0
UC-03-WH-B-0	UC-04-WH-B-0	UC-05-WH-B-0	UC-06-WH-B-0	UC-07-WH-B-0	UC-08-WH-B-0
UC-03-CU-B-0	UC-04-CU-B-0	UC-05-CU-B-0	UC-06-CU-B-0	UC-07-CU-B-0	UC-08-CU-B-0
UC-03-CH-B-0	UC-04-CH-B-0	UC-05-CH-B-0	UC-06-CH-B-0	UC-07-CH-B-0	UC-08-CH-B-0
UC-03-CO-B-0	UC-04-CO-B-0	UC-05-CO-B-0	UC-06-CO-B-0	UC-07-CO-B-0	UC-08-CO-B-0
UC-03-OL-B-0	UC-04-OL-B-0	UC-05-OL-B-0	UC-06-OL-B-0	UC-07-OL-B-0	UC-08-OL-B-0
UC-03-AO-B-0	UC-04-AO-B-0	UC-05-AO-B-0	UC-06-AO-B-0	UC-07-AO-B-0	UC-08-AO-B-0

FIRM URETERIC CATHETER HYDROPHILIC

UC-03-TO-B-H	UC-04-TO-B-H	UC-05-TO-B-H	UC-06-TO-B-H	UC-07-TO-B-H	UC-08-TO-B-H
UC-03-CL-B-H	UC-04-CL-B-H	UC-05-CL-B-H	UC-06-CL-B-H	UC-07-CL-B-H	UC-08-CL-B-H
UC-03-WH-B-H	UC-04-WH-B-H	UC-05-WH-B-H	UC-06-WH-B-H	UC-07-WH-B-H	UC-08-WH-B-H
UC-03-CU-B-H	UC-04-CU-B-H	UC-05-CU-B-H	UC-06-CU-B-H	UC-07-CU-B-H	UC-08-CU-B-H
UC-03-CH-B-H	UC-04-CH-B-H	UC-05-CH-B-H	UC-06-CH-B-H	UC-07-CH-B-H	UC-08-CH-B-H
UC-03-CO-B-H	UC-04-CO-B-H	UC-05-CO-B-H	UC-06-CO-B-H	UC-07-CO-B-H	UC-08-CO-B-H
UC-03-OL-B-H	UC-04-OL-B-H	UC-05-OL-B-H	UC-06-OL-B-H	UC-07-OL-B-H	UC-08-OL-B-H
UC-03-AO-B-H	UC-04-AO-B-H	UC-05-AO-B-H	UC-06-AO-B-H	UC-07-AO-B-H	UC-08-AO-B-H

ORDERING INFORMATION



O  
R  
D  
E  
R  
I  
N  
G  
I  
N  
F  
O  
R  
M  
A  
T  
I  
O  
N

*Nitinol ureteral stone basket*

NITINOL URETERAL STONE BASKET TIPPED, HELICAL	NITINOL URETERAL STONE BASKET TIPPED, STRAIGHT	NITINOL URETERAL STONE BASKET TIPLESS, HELICAL	NITINOL URETERAL STONE BASKET TIPLES, STRAIGHT
USB-4-3-N-T-H	USB-4-3-N-T-S	USB-6-2.4-N-0-H	USB-4-1.8-N-0-S
USB-4-3.5-N-T-H	USB-4-4-N-T-S	USB-6-3-N-0-H	USB-4-2.4-N-0-S
USB-4-3.8-N-T-H	USB-4-5-N-T-S	USB-6-4-N-0-H	USB-4-2.7-N-0-S
USB-4-4-N-T-H		USB-6-5-N-0-H	USB-4-3-N-0-S
USB-4-4.5-N-T-H			USB-4-5-N-0-S
USB-4-4.8-N-T-H			
USB-4-5-N-T-H			
USB-5-3-N-T-H			
USB-5-4-N-T-H			
USB-5-4.8-N-T-H			
USB-5-5-N-T-H			

*Stainless ureteral stone basket*

STAINLESS URETERAL STONE BASKET			
TIPPED, HELICAL			
USB-3-3-S-T-H	USB-4-3-S-T-H	USB-5-3-S-T-H	USB-6-3.6-S-T-H
USB-3-3.6-S-T-H	USB-4-3.6-S-T-H	USB-5-3.6-S-T-H	USB-6-4-S-T-H
USB-3-4.8-S-T-H	USB-4-4-S-T-H	USB-5-4-S-T-H	USB-6-4.8-S-T-H
USB-3-4-S-T-H	USB-4-4.8-S-T-H	USB-5-4.8-S-T-H	USB-6-5-S-T-H
USB-3-5-S-T-H	USB-4-5-S-T-H	USB-5-5-S-T-H	



Table showing the basket diameter and basket length with the catheter diameter and length:

MATERIAL	WIRE DIAMETER	BASKETDIAMETER IN	BASKET LENGTH IN ( MM)	CATHETER DIAMETER	CATHETER LENGTH IN (CM)
OF WIRE	IN ( MM)	(MM)		IN (FR)	
NITINOL	0.6 MM	10 MM	20 MM	SIZE 1.8FR SUITABLE WITH TIPLESS	120CM
			25 MM	SIZE 2.4FR SUITABLE WITH TIPLESS	120CM
				SIZE 2.7 FR SUITABLE WITH TIPLESS	120CM
				SIZE 3FR SUITABLE WITH TIPLESS	120CM
				SIZE 4FR SUITABLE WITH TIPLESS	120CM
				SIZE 2.7FR SUITABLE WITH TIPPED	100CM
				SIZE 3FR SUITABLE WITH TIPPED	100CM
				SIZE 4FR SUITABLE WITH TIPPED	100CM
				SIZE 4.8FR SUITABLE WITH TIPPED	100CM
				SIZE 5FR SUITABLE WITH TIPPED	100CM
	1.0 MM	15 MM	35 MM	SIZE 4.8FR SUITABLE WITH TIPPED	100CM
				SIZE 5FR SUITABLE WITH TIPPED	100CM
STAINLESS STEEL	0.6 MM	15 MM	35 MM	SIZE 3FR SUITABLE WITH TIPPED	90CM
				SIZE 4FR SUITABLE WITH TIPPED	90CM
				SIZE 4.8FR SUITABLE WITH TIPPED	90CM
				SIZE 5FR SUITABLE WITH TIPPED	90CM
	1.0 MM	15 MM	35 MM	SIZE 4.8FR SUITABLE WITH TIPPED	90CM
				SIZE 5FR SUITABLE WITH TIPPED	90CM

ORDERING INFORMATION

URETERAL ACCESS SHEATH

Ureteral access sheath

Ureteral Access Sheath 11Fr.(Saflex)	Ureteral Access Sheath 14Fr.(Saflex)
UAS-11-24	UAS-14-24
UAS-11-26	UAS-14-26
UAS-11-28	UAS-14-28
UAS-11-30	UAS-14-30
UAS-11-32	UAS-14-32
UAS-11-34	UAS-14-34
UAS-11-35	UAS-14-35
UAS-11-36	UAS-14-36
UAS-11-38	UAS-14-38
UAS-11-40	UAS-14-40
UAS-11-42	UAS-14-42
UAS-11-44	UAS-14-44
UAS-11-45	UAS-14-45
UAS-11-46	UAS-14-46
UAS-11-48	UAS-14-48
UAS-11-50	UAS-14-50
UAS-11-52	UAS-14-52
UAS-11-54	UAS-14-54



O  
R  
D  
E  
R  
I  
N  
G  
  
I  
N  
F  
O  
R  
M  
A  
T  
I  
O  
N

*Ureteric Sequential dilators*

*Kit Contains:*

URETERIC DILATOR 06 FR 70 CM

URETERIC DILATOR 08 FR 70 CM

URETERIC DILATOR 10 FR 70 CM

URETERIC DILATOR 12 FR 70 CM

URETERIC DILATOR 14 FR 70 CM

URETERIC DILATOR 16 FR 70 CM

**URETERAL BALLOON DILATOR**

*Ureteral Balloon Dilator*

UBD-04-04

UBD-05-04

UBD-05-06

UBD-06-04

UBD-06-06

UBD-07-04

UBD-07-06



*Nephrocutaneous Dilators and Sheaths*

DILATORS	SHEATH
NCD-DIL-06	NCD-SHE-22
NCD-DIL-08	NCD-SHE-24
NCD-DIL-10	NCD-SHE-26
NCD-DIL-12	NCD-SHE-28
NCD-DIL-14	NCD-SHE-30
NCD-DIL-16	
NCD-DIL-18	
NCD-DIL-20	
NCD-DIL-22	
NCD-DIL-24	
NCD-DIL-26	
NCD-DIL-28	
NCD-DIL-30	

**NEPHROSTOMY BALLOON DILATOR**

*High pressure Nephrostomy balloon dilator*

BALLOON DIAMETER	BALLOON LENGTH	SHAFT LENGTH	CATHETER DIAMETER	BURST PRESSURE	GUIDE WIRE
10 MM = 30 FR	120 MM	55 CM	2.3 MM = 7 FR	17 ATM	0.038 INCH

O  
R  
D  
E  
R  
I  
N  
G  
  
I  
N  
F  
O  
R  
M  
A  
T  
I  
O  
N



ORDERING INFORMATION

*Nephrostomy catheter malecot*

NEPHROSTOMY CATHETER MALECOT	NEPHROSTOMY CATHETER MALECOT HYDROPHILIC COATED	NEPHROSTOMY CATHETER MALECOT KIT	NEPHROSTOMY CATHETER MALECOT KIT HYDROPHILIC COATED
NEP-06-30-M	NEP-06-30-M-H	NEP-06-30-M-K	NEP-06-30-M-K-H
NEP-07-30-M	NEP-07-30-M-H	NEP-07-30-M-K	NEP-07-30-M-K-H
NEP-08-30-M	NEP-08-30-M-H	NEP-08-30-M-K	NEP-08-30-M-K-H
NEP-10-30-M	NEP-10-30-M-H	NEP-10-30-M-K	NEP-10-30-M-K-H
NEP-12-30-M	NEP-12-30-M-H	NEP-12-30-M-K	NEP-12-30-M-K-H
NEP-14-30-M	NEP-14-30-M-H	NEP-14-30-M-K	NEP-14-30-M-K-H
NEP-16-30-M	NEP-16-30-M-H	NEP-16-30-M-K	NEP-16-30-M-K-H
NEP-18-30-M	NEP-18-30-M-H	NEP-18-30-M-K	NEP-18-30-M-K-H
NEP-20-30-M	NEP-20-30-M-H	NEP-20-30-M-K	NEP-20-30-M-K-H
NEP-22-30-M	NEP-22-30-M-H	NEP-22-30-M-K	NEP-22-30-M-K-H
NEP-24-30-M	NEP-24-30-M -H	NEP-24-30-M-K	NEP-24-30-M-K-H

*Nephrostomy catheter Single loop (J type)*

NEPHROSTOMY CATHETER J TYPE	NEPHROSTOMY CATHETER J TYPE HYDROPHILIC COATED	NEPHROSTOMY CATHETER J TYPE KIT	NEPHROSTOMY CATHETER J TYPE KIT HYDROPHILIC COATED
NEP-04-30-J	NEP-04-30-J-H	NEP-04-30-J-K	NEP-04-30-J-K-H
NEP-05-30-J	NEP-05-30-J-H	NEP-05-30-J-K	NEP-05-30-J-K-H
NEP-06-30-J	NEP-06-30-J-H	NEP-06-30-J-K	NEP-06-30-J-K-H
NEP-07-30-J	NEP-07-30-J-H	NEP-07-30-J-K	NEP-07-30-J-K-H
NEP-08-30-J	NEP-08-30-J-H	NEP-08-30-J-K	NEP-08-30-J-K-H
NEP-10-30-J	NEP-10-30-J-H	NEP-10-30-J-K	NEP-10-30-J-K-H
NEP-12-30-J	NEP-12-30-J-H	NEP-12-30-J-K	NEP-12-30-J-K-H
NEP-14-30-J	NEP-14-30-J-H	NEP-14-30-J-K	NEP-14-30-J-K-H
NEP-16-30-J	NEP-16-30-J-H	NEP-16-30-J-K	NEP-16-30-J-K-H
NEP-18-30-J	NEP-18-30-J-H	NEP-18-30-J-K	NEP-18-30-J-K-H
NEP-20-30-J	NEP-20-30-J-H	NEP-20-30-J-K	NEP-20-30-J-K-H
NEP-22-30-J	NEP-22-30-J-H	NEP-22-30-J-K	NEP-22-30-J-K-H
NEP-24-30-J	NEP-24-30-J-H	NEP-24-30-J-K	NEP-24-30-J-K-H



*One step Nephrostomy Catheter*

ONE STEP NEPHROSTOMY CATHETER J TYPE	ONE STEP NEPHROSTOMY CATHETER J TYPE HYDROPHILIC COATED	ONE STEP NEPHROSTOMY CATHETER MALECOT	ONE STEP NEPHROSTOMY CATHETER MALECOT HYDROPHILIC COATED
NEP-06-30-J-OS	NEP-06-30-J-OS-H	NEP-06-30-M-OS	NEP-06-30-M-OS-H
NEP-08-30-J-OS	NEP-08-30-J-OS-H	NEP-08-30-M-OS	NEP-08-30-M-OS-H
NEP-10-30-J-OS	NEP-10-30-J-OS-H	NEP-10-30-M-OS	NEP-10-30-M-OS-H
NEP-12-30-J-OS	NEP-12-30-J-OS-H	NEP-12-30-M-OS	NEP-12-30-M-OS-H
NEP-14-30-J-OS	NEP-14-30-J-OS-H	NEP-14-30-M-OS	NEP-14-30-M-OS-H
NEP-16-30-J-OS	NEP-16-30-J-OS-H	NEP-16-30-M-OS	NEP-16-30-M-OS-H

*Nephrostomy catheter J type or Malecot with lock*

**Code: Add (L) at the end of any code above.**

*Re entry Nephrostomy catheter Malecot*

RE ENTRY NEPHROSTOMY CATHETER MALECOT	RE ENTRY NEPHROSTOMY CATHETER MALECOT HYDROPHILIC COATING
NEP-4/10-30-M	NEP-4/10-30-M-H
NEP-5/12-30-M	NEP-5/12-30-M-H
NEP-6/14-30-M	NEP-6/14-30-M-H
NEP-7/16-30-M	NEP-7/16-30-M-H
NEP-8/18-30-M	NEP-8/18-30-M-H
NEP-8/20-30-M	NEP-8/20-30-M-H
NEP-8/22-30-M	NEP-8/22-30-M-H
NEP-8/24-30-M	NEP-8/24-30-M-H

O  
R  
D  
E  
R  
I  
N  
G  
  
I  
N  
F  
O  
R  
M  
A  
T  
I  
O  
N



O  
R  
D  
E  
R  
I  
N  
G  
  
I  
N  
F  
O  
R  
M  
A  
T  
I  
O  
N

*Single Lumen*

**RECTAL URODYNAMIC  
CATHETER**

**NON LATEX**

UD-R1-04-N

UD-R1-05-N

UD-R1-04.5-N

*Double Lumen*

**URODYNAMIC CATHETER**

**CYSTOMETRY**

UD-2-06

UD-2-07

UD-2-08

UD-2-09

UD-2-10

**RECTAL URODYNAMIC CATHETER**

**NON LATEX**

UD-R2-08-N

UD-R2-09-N

UD-R2-10-N

UD-R2-11-N

UD-R2-12-N

*Triple Lumen*

**URODYNAMIC CATHETER**

**PROFILOMETRY**

UD-3-06

UD-3-08

UD-3-09

UD-3-10

UD-3-12



*Supra-pubic cystostomy catheter with metal cannula*

SUPRAPUBIC KIT WITH J CATHETEER	SUPRAPUBIC KIT WITH MALECOT CATHETER	SUPRAPUBIC KIT WITH SILICON 2 WAY CATHETER	SUPRAPUBIC KIT WITH LATEX 2 WAY CATHETER
SUP-08-J-K	SUP-08-M-K	SUP-08-S-K	SUP-08-L-K
SUP-10-J-K	SUP-10-M-K	SUP-10-S-K	SUP-10-L-K
SUP-12-J-K	SUP-12-M-K	SUP-12-S-K	SUP-12-L-K
SUP-14-J-K	SUP-14-M-K	SUP-14-S-K	SUP-14-L-K

*Supra-pubic cystostomy catheter with plastic cannula*

CYSTOCATH CANNULA KIT WITH J CATHETEER	CYSTOCATH CANNULA KIT WITH MALECOT CATHETER	CYSTOCATH CANNULA KIT WITH SILICON 2 WAY CATHETER	CYSTOCATH CANNULA KIT WITH LATEX 2 WAY CATHETER
CYST-08-J-K	CYST-08-M-K	CYST-08-S-K	CYST-08-L-K
CYST-10-J-K	CYST-10-M-K	CYST-10-S-K	CYST-10-L-K
CYST-12-J-K	CYST-12-M-K	CYST-12-S-K	CYST-12-L-K
CYST-14-J-K	CYST-14-M-K	CYST-14-S-K	CYST-14-L-K
CYST-16-J-K	CYST-16-M-K	CYST-16-S-K	CYST-16-L-K
CYST-18-J-K	CYST-18-M-K	CYST-18-S-K	CYST-18-L-K
CYST-20-J-K	CYST-20-M-K	CYST-20-S-K	CYST-20-L-K
CYST-22-J-K	CYST-22-M-K	CYST-22-S-K	CYST-22-L-K
CYST-24-J-K	CYST-24-M-K	CYST-24-S-K	CYST-24-L-K

ORDERING INFORMATION



O  
R  
D  
E  
R  
I  
N  
G  
I  
N  
F  
O  
R  
M  
A  
T  
I  
O  
N

*Latex Silicon Coated Foley Catheter*

<b>TWO WAY LATEX SILICON COATED FOLEY CATHETER</b>	<b>THREE WAY LATEX SILICON COATED FOLEY CATHETER</b>
F-SC-06-2	F-SC-18-3
F-SC-08-2	F-SC-20-3
F-SC-10-2	F-SC-22-3
F-SC-12-2	F-SC-24-3
F-SC-14-2	
F-SC-16-2	
F-SC-18-2	
F-SC-20-2	
F-SC-22-2	
F-SC-24-2	

*Total Silicon Foley Catheter*

<b>TWO WAY TOTAL SILICON FOLEY CATHETER</b>	<b>THREE WAY TOTAL SILICON FOLEY CATHETER</b>
F-TS-06-2	F-TS-18-3
F-TS-08-2	F-TS-20-3
F-TS-10-2	F-TS-22-3
F-TS-12-2	F-TS-24-3
F-TS-14-2	
F-TS-16-2	
F-TS-18-2	
F-TS-20-2	
F-TS-22-2	
F-TS-24-2	



*Nelation Catheter*

NELATON CATHETER	ADAPTOR COLOR
NEL-06	GREEN LIGHT
NEL-08	BLUE
NEL-10	BLACK
NEL-12	WHITE
NEL-14	DARK GREEN
NEL-16	ORANGE
NEL-18	DARK RED
NEL-20	YELLOW
NEL-22	PURPLE
NEL-24	DARK BLUE

O  
R  
D  
E  
R  
I  
N  
G  
  
I  
N  
F  
O  
R  
M  
A  
T  
I  
O  
N



O  
R  
D  
E  
R  
I  
N  
G  
  
I  
N  
F  
O  
R  
M  
A  
T  
I  
O  
N

*Automatic Biopsy Needle*

**BIOPSY NEEDLE FOR  
AUTOMATIC GUN**

AUTOCUT-14-10

AUTOCUT-14-15

AUTOCUT-14-20

AUTOCUT-14-25

AUTOCUT-16-10

AUTOCUT-16-15

AUTOCUT-16-20

AUTOCUT-16-25

AUTOCUT-18-10

AUTOCUT-18-15

AUTOCUT-18-20

AUTOCUT-18-25

AUTOCUT-18-30

*Semi-Automatic Biopsy Needle*

**BIOPSY NEEDLE FOR  
SEMIAUTOMATIC**

SEMICUT-14-10

SEMICUT-14-15

SEMICUT-14-20

SEMICUT-14-25

SEMICUT-16-10

SEMICUT-16-15

SEMICUT-16-20

SEMICUT-16-25

SEMICUT-18-10

SEMICUT-18-15

SEMICUT-18-20

SEMICUT-18-25



*Bladder and prostatic injection needle*

BLADDER INJECTION NEEDLE	PROSTATIC INJECTION NEEDLE
IN-04-H	IN-04-N
IN-05-H	IN-05-N
IN-06-H	IN-06-N
IN-07-H	IN-07-N

**PUNCTURE AND CHIBA NEEDLE**

*Puncture and chiba needle*

INTIAL PUNCTURE NEEDLE	CHIBA NEEDLE
PUN-14-20	CHN-18-16
PUN-14-25	CHN-18-20
PUN-14-30	CHN-18-25
PUN-16-20	CHN-20-20
PUN-16-25	CHN-22-20
PUN-16-30	
PUN-16-35	
PUN-18-20	
PUN-18-25	
PUN-18-30	

O  
R  
D  
E  
R  
I  
N  
G  
  
I  
N  
F  
O  
R  
M  
A  
T  
I  
O  
N



O  
R  
D  
E  
R  
I  
N  
G  
  
I  
N  
F  
O  
R  
M  
A  
T  
I  
O  
N

*Nephrostomy fascial dilator set*

Uncoated	Hydrophillic
DIL-0620	DIL-0620-H
DIL-0820	DIL-0820 H
DIL-1020	DIL-1020 H
DIL-1220	DIL-1220 H
DIL-1420	DIL-1420 H
DIL-1620	DIL-1620 H

*Nephrostomy fascial dilator*

Uncoated	Hydrophillic
DIL-0420	DIL-0420-H
DIL-0520	DIL-0520-H
DIL-0620	DIL-0620 H
DIL-0820	DIL-0820 H
DIL-1020	DIL-1020 H
DIL-1220	DIL-1220 H
DIL-1420	DIL-1420 H
DIL-1620	DIL-1620 H
DIL-1820	DIL-1820 H
DIL-2020	DIL-2020 H
DIL-2220	DIL-2220 H
DIL-2420	DIL-2420 H
DIL-2620	DIL-2620 H



Guide Wire PTFE coated

STRAIGHT GUIDE WIRE

CODE	DIMENSION	CORE MATERIAL
SGW-15018-S-C	0.018"X 150CM	STAINLESS STEEL
SGW-15021-S-C	0.021"X 150CM	STAINLESS STEEL
SGW-15028-S-C	0.028"X 150CM	STAINLESS STEEL
SGW-15032-S-C	0.032"X 150CM	STAINLESS STEEL
SGW-15035-S-C	0.035"X 150CM	STAINLESS STEEL
SGW-15038-S-C	0.038"X 150CM	STAINLESS STEEL

CURVED GUIDE WIRE

CODE	DIMENSION	CORE MATERIAL
JGW-15035-S-C	0.035"X 150CM	STAINLESS STEEL
JGW-15038-S-C	0.038"X 150CM	STAINLESS STEEL
JGW-10028-N-C	0.028"X 100CM	NITINOL
JGW-10035-N-C	0.035"X 100CM	NITINOL

Guide Wire Hydrophilic coated

STRAIGHT GUIDE WIRE

CODE	DIMENSION	CORE MATERIAL
SGW-15035-S-H	0.035"X 150CM	STAINLESS STEEL
SGW-15038-S-H	0.038"X 150CM	STAINLESS STEEL
SGW-15035-N-H	0.035"X 150CM	NITINOL
SGW-15038-N-H	0.038"X 150CM	NITINOL

ORDERING INFORMATION



O  
R  
D  
E  
R  
I  
N  
G  
I  
N  
F  
O  
R  
M  
A  
T  
I  
O  
N

*Nitinol Guide Wires*

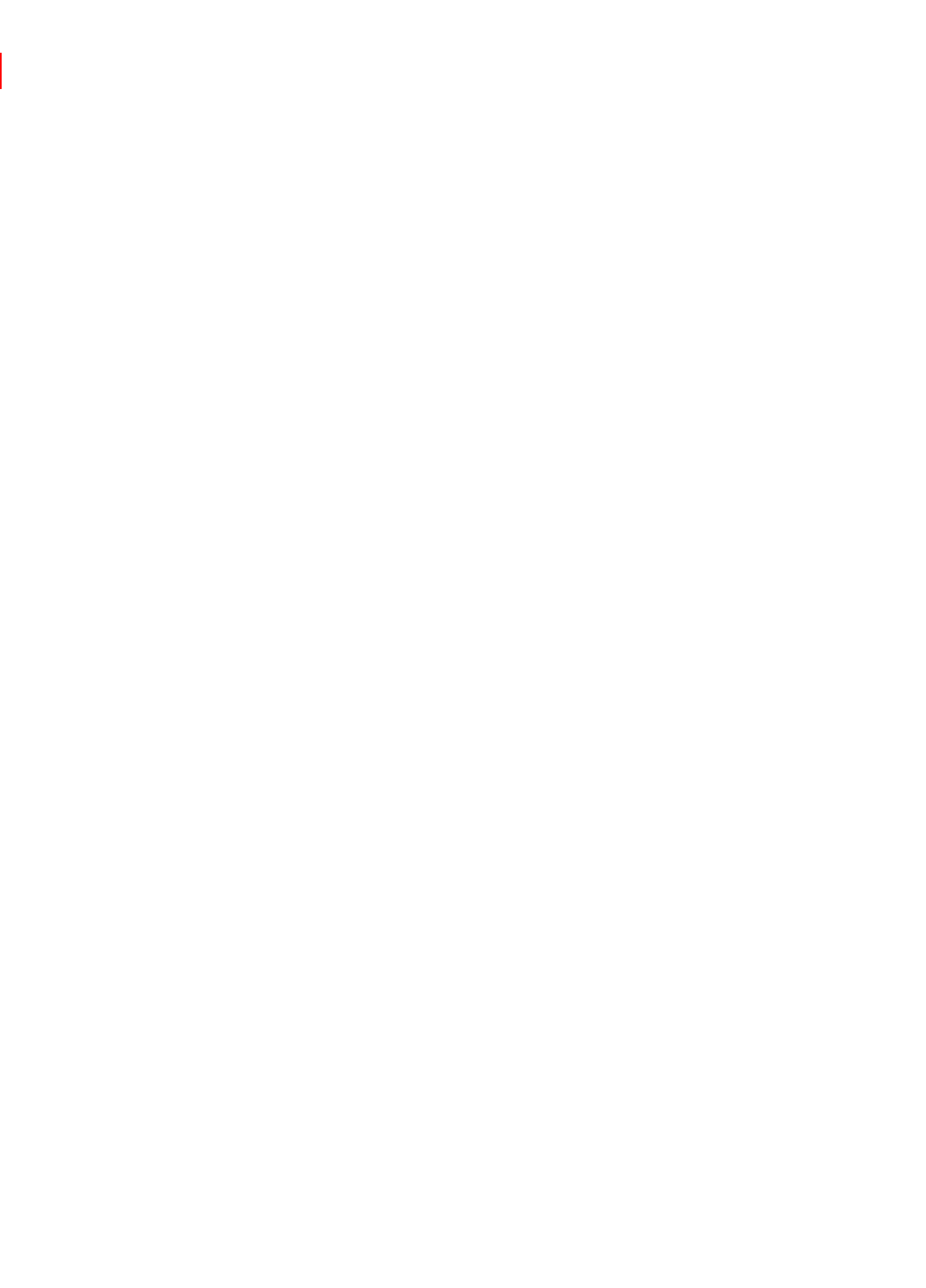
CODE	DIMENSION	TYPE OF COATING
JGW-10028-N-C	0.028"X 100CM	PTFE
JGW-10035-N-C	0.035"X 100CM	PTFE
SGW-15035-N-H	0.035"X 150CM	HYDROPHILIC
SGW-15038-N-H	0.038"X 150CM	HYDROPHILIC
	FLEXIBLE GUIDE	
SGW-15035-N-H-FG	0.035"X 150CM	HYDROPHILIC

*Zebra Guide Wires*

CODE	DIMENSION	CORE MATERIAL
SGW-15035-N-Z	0.035"X 150CM	NITINOL

*Lunderquist Guide Wire*

CODE	DIMENSION	CORE MATERIAL
JGW-08035-LQ	0.035"X 80CM	STAINLESS STEEL



***Contact us*****Dr. Samy Hamboly****Chairman/CEO**

Email: dr.samy@amecath.com

Mobile: +20 1222117057

**Dr. M. Bahr****General Manager**

Email: Dr.bahr@amecath.com

Mobile: +20 1222320158

**Eric Prunier****Amecath Europe**

Email: eprunier@club-internet.fr

Mobile: +33 6 212 50778

**Yasser Fouda****Supply Chain Manager**

Email: Yfouda@amecath.com

Mobile: +20 1009568978

**Dr. M. Kaffas****Sales and Business Development Manager**

Email: dr.kaffas@amecath.com

Mobile: +20 1152887840

**Dr. Eng. Ahmed Ali****Design and development Manager**

Email: dr.a.m.aly@amecath.com

Mobile: +20 1223405608

**Hany Abdallah****Urology Regulatory Affair Manager**

Email: habdallah@amecath.com

Mobile: +20 1157334188

**Noura Hamboly****Brand Manager**

Email: noura.hamboly@amecath.com

Mobile: +20 1148414705

**Eng. Sherif M. W. Ghaly****Account Project Manager**

Email: shwagdy@amecath.com

Mobile: +20 1223293221

**Hassan El Sayed****Area Manager**

Email: hassan.elsayed@amecath.com

Mobile: +20 1223445535



# Amecath

AMECO MEDICAL INDUSTRIES

- Established at 2001 for design, development and production of sterile dialysis catheter kits and accessories, Central venous kits and accessories, Urological catheters kits, stents, needles and accessories.
- 250 people are currently working at Ameco among them 5 doctors, 8 engineers, high caliber administrative, logistic and production .
- All manufacturing processes are under one roof. Extrusion, molding, over molding, tipping, punching, assembly, coating packaging and sterilization.
- Many Success stories for contact manufacturing and private labeling with major international companies.
- In 2002, Amecath received ISO13485 certificate in scope of design, development and production of catheter and kits, entailing that Amecath is applying full product quality assurance and Quality management system from design, production to service provision.
- In 2002, Amecath received EC mark (EC certificate) for all products, entailing that Amecath products can be freely placed in the market of 25 European countries and other countries with recognition of the European directives
- In 2005, Amecath received EC-Design examination for class III products (Central Venous Haemodialysis catheters for long term use), entailing that the device has passed the examination for safety and performance.
- In 2011, Amecath received Health Canada approval for central venous catheters, short term haemodialysis catheter and sheath introducer and urology double loop stents.
- In 2011, Amecath received Russian registration for central venous catheter and hemodialysis catheter, other products are under the registration process
- In 2012, Amecath received FDA approval for central venous catheter and short term hemodialysis catheter other products are currently under fda review.
- In 2013, Amecath received FDA approval for Dual lumen implantable long term haemodialysis catheters, sheath introducers and other products are currently under FDA review.
- In 2013, Amecath received EC-Design examination for class III products (Central Venous and peripherally inserted central catheters), entailing that the device has passed the examination for safety and performance
- In 2013, Amecath received health Canada Approval for long term implantable hemodialysis catheters



*Manufactured By:*

**Ameco Medical Industries**

Industrial zone B4 Plot 119 east, 10th of Ramadan city - Egypt

Phone +20.15.383.066/7 | Fax +20.15.383.068

email: [info@amecath.com](mailto:info@amecath.com) . [www.amecath.com](http://www.amecath.com)

**Authoized European Representative**

**Prumenet S.A.R.L**

Route du Pont Coloré. 13550 PALUDS de NOVES - France

Tel : +33 4 909 54 253 | Fax : +33 4 909 50 291

Email: [eprunier@club-internet.fr](mailto:eprunier@club-internet.fr)