



Fit it & Forget it
Higher energy rating.
Longer warranties.



WHY PEOPLE PREFER AN A. O. SMITH WATER HEATER...

- ADVANCED TECHNOLOGY**
Double coated glass-lined tank. Maximum protection against hard water and corrosion.
- SUPERIOR QUALITY**
Get the best quality that ensures, you have a water heater that works in Indian water conditions.
- LONGER WARRANTIES**
7 years warranty on inner tank, 4 years extended warranty* on glass coated heating element & 2 years comprehensive.
- ENERGY SAVING**
BEE 4 star rating. One of the most energy efficient water heaters you can buy.
- MORE FEATURES & USER CONTROLS**
Remote control*, temperature settings, power ON/OFF, timer.
- MADE BETTER**
Made in India's most modern and advanced water heater factory.

* Conditions apply, refer to last page | † Only for EWSH PLUS

POWER OF 1 SERVICE**

A. O. Smith is committed to respond to the customer's problem within 1 hour of the call being registered on the toll free number. The problem experienced by the customer is to be rectified within one working day. And the solution will be provided the first time itself.



Toll Free No.: **1800-103-2468** or
SMS us: **+91 99410 32468** or
Email us: **aosmithcs@aosmithindia.com**
Monday to Friday: 9 am to 8 pm.
Saturday & Sunday: 9 am to 6 pm.

A. O. SMITH: THE COMPANY

A. O. Smith has been setting new standards for India's water heater industry.

A. O. Smith India Water Products Private Limited was established in 2006. Since then, the A. O. Smith team has conducted numerous focus group studies and spent endless research hours determining what India wanted in a water heater. Backed by 75 years of proven technological advances, A. O. Smith India has created a stylish design with features demanded by the Indian consumer.

The A. O. Smith plant with manufacturing facilities started with 76,000 sq. ft. is located on 20 acres, just outside Bengaluru, in the KIADB Industrial Area, Harohalli. The India operations is the 16th A. O. Smith manufacturing facility worldwide.

In 2013 additional 150,000 sq.ft. has been added in Bengaluru factory. A. O. Smith's India plant has extensive engineering and technical resources and has the latest technologies incorporated. A. O. Smith is the first manufacturer to invest in and produce glass-lined water heaters in India.

Today, A. O. Smith Corporation is one of the largest water heater manufacturers in the world and is a global leader in innovative technology and energy efficient solutions.



***Extended Warranty**

Registration of Extended Warranty (1 year or 2 years) is valid if customer registers the product within 60 days of purchase. Please call our toll free no. 1800-103-2468 or fill up the details in our website link (<http://www.aosmithindia.com/warranty-form.aspx>) to register.

****Power of 1 Service**

Calls requested with A. O. Smith Customer Care Centre on working days before 4 pm | Within city municipal limits only | Restricted to service requests only | Available only in following cities: Ahmedabad, Bangalore, Chandigarh, Chennai, Cochin, Delhi, Faridabad, Ghaziabad, Goa, Gurgaon, Hyderabad, Kolkata, Noida, Pune | Service may impact due to: natural calamities, public holidays and under unavoidable conditions due to political and regional regulations.

Contact your friendly A. O. Smith dealer today:



REGISTERED OFFICE:

Manufactured by **A. O. Smith India Water Products Private Limited**

(formerly known as A. O. Smith India Water Heating Private Limited)

Plot No. 300, Phase - II, KIADB Industrial Area, Harohalli, Kanakapura Taluk, Ramanagara District, Karnataka – 562 112, India.

CIN: U31909KA2006PTC040282

www.aosmithindia.com



Featured model EWSH / EWSH PLUS is available in 15 & 25 litre capacities.

KEY FEATURES



1 GLASS COATED HEATING ELEMENT



Scale and sediment build-up on the surface of the element can lead to premature failure. A. O. Smith Glass Coating helps to prevent scale formation and extends the life of the heating element.

2 DOUBLE COATED INNER TANK



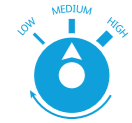
Double coating of the glass-lining increases glass thickness and ensures good glass coverage, thus reducing the risk of tank steel corrosion.

3 REMOTE CONTROL



Displays the water temperature and timer selection which allows you to set the time to start the heater accordingly. A test button is provided for testing current leakage. Temperature can be precisely set between 35°C to 75°C. It is easy to operate the water heater with remote control even if the water heater is placed in an enclosed area. *(Available only in EWSH PLUS series)*

4 TEMPERATURE CONTROL KNOB



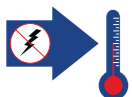
The temperature control knob allows you to set the temperature precisely between 25°C to 75°C. *(Available only in EWSH series)*

5 ANODE ROD



The tank has an anode rod which has stainless steel core that is designed to protect the tank from corrosive elements. The anode rod uses a special cathodic action to fight these elements and thus prolong the life of the water heater.

6 THERMAL CUTOUT



If the water temperature exceeds the highest preset level, the thermal cutout cuts off the power supply to assure safety.

7 SAFETY VALVE



The safety valve is designed to automatically relieve and discharge water, in case the pressure overshoots the preset limits.

8 FOUR YEARS EXTENDED WARRANTY



The tank carries a 7 years warranty. The heating element has a 2 years warranty that can be extended to 4 years if registered within the first 60 days of purchase. All other parts carry a 2 years warranty. *(Warranty applies only if the water heater is purchased from our authorised dealer)*

The EWSH / EWSH PLUS range comes in 15 and 25 litre capacities. Ergonomically and aesthetically designed with floor and wall mounting option, our water heaters go well where your bathroom ceiling is low or you have a false ceiling or an attic, to meet your complete bathroom needs.

EWSH & EWSH PLUS 15 & 25 Litres



SPECIFICATIONS

MODEL	EWSH-15	EWSH-25	EWSH PLUS-15	EWSH PLUS-25
Volume [L]	15	25	15	25
Power [W]	2000	2000	2000	2000
Voltage/Frequency [V/Hz]	230~/50	230~/50	230~/50	230~/50
Temperature range [°C]	25-75	25-75	35-75	35-75
Rated water pressure [Bar]	8	8	8	8
Reheating Time for 35°C rise [in min.]	20	35	20	35
Actual stdg. loss [kWh/24h/45°C diff.]	0.525	0.672	0.525	0.672
Net Weight [kg]	12	18	12	18

DIMENSIONS

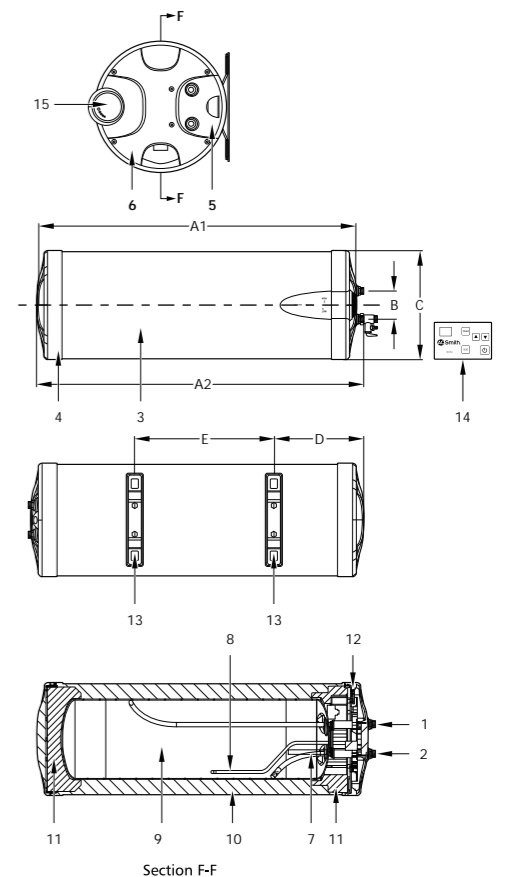
MODEL	EWSH-15	EWSH-25	EWSH PLUS-15	EWSH PLUS-25
A1 [mm]	628	908	628	908
A2 [mm]	641	921	641	921
B [mm]	80	80	80	80
C [mm]	310	310	310	310
D [mm]	167	247	167	247
E [mm]	260	380	260	380

PART DESCRIPTORS

1 Outlet	9 Tank
2 Inlet	10 PU Insulation
3 Jacket	11 EPS Insulation
4 Left Cover	12 Thermal Cutout
5 Right Cover	13 Installation Bracket
6 Service Cover	14 Remote Control†
7 Anode	15 Temperature Control Knob††
8 Heating Element	

† Only for EWSH PLUS Series

†† Only for EWSH Series



Note: A. O. Smith reserves the right to amend or modify the specifications and features at any time, as and when required without any prior notification. EWSH / EWSH PLUS is available with right-hand side inlet outlet configuration. It is also available with left-hand side inlet outlet configuration.