

100%
Swadeshi

ACE FX 150

Nextgen Hydraulic Crane Capacity: 15 tonnes

Rough terrain and rugged
articulated nextgen pick n move crane.

ACE INDIA'S NO. 1
CRANE BRAND

- Front mounted ergonomically designed Cabin
- Improved kinematics with low Center of Gravity
- Slotted boom
- Self Adjusting hook block
- Fail safe air brakes
- Better creep speed

BEST IN CLASS STABILITY
Full rated
lifting capacity
available in
articulated / steered
condition



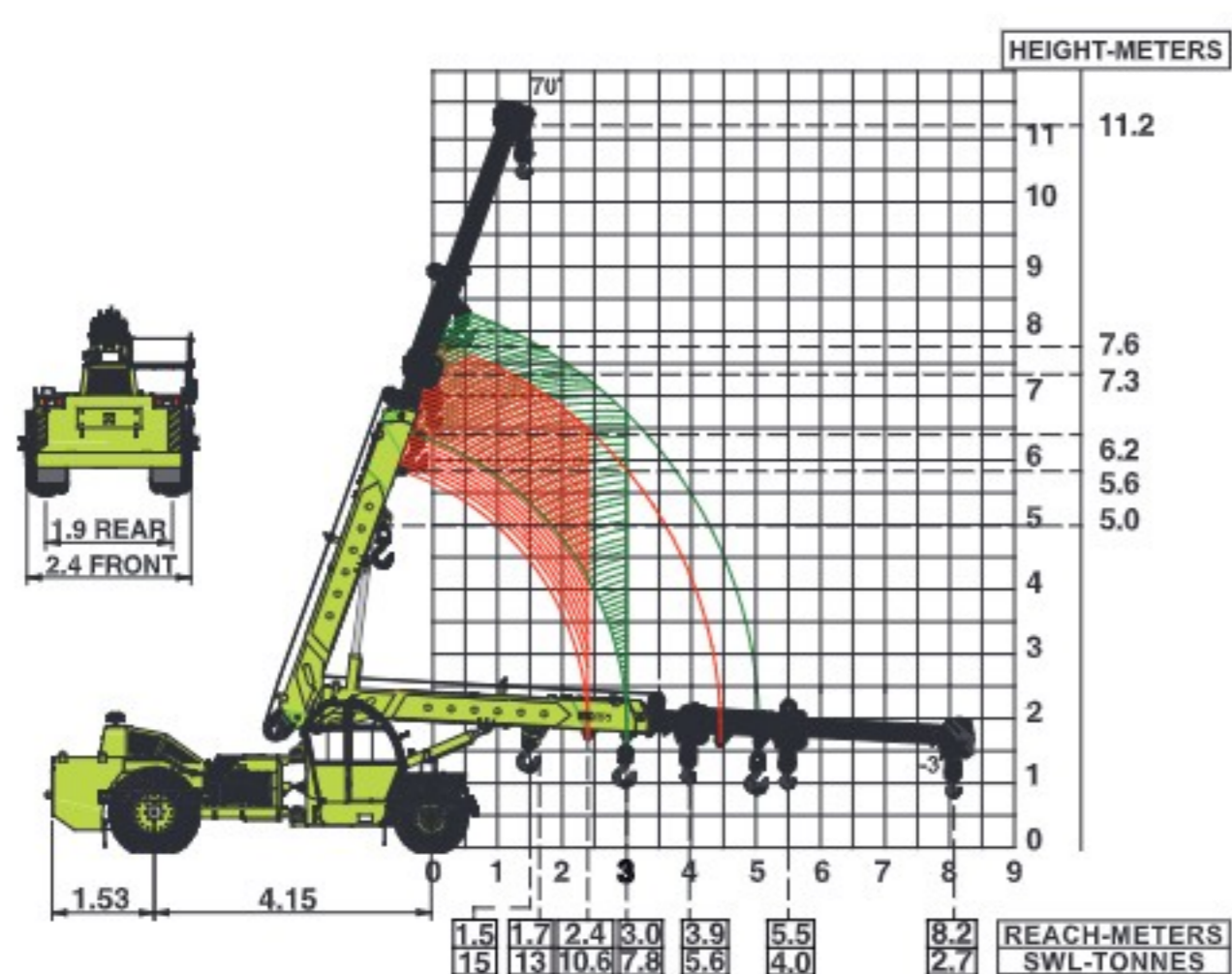
Specifications

FX150

LIFTING CAPACITY (Free on wheels)	15 Tonnes
ENGINE	Tata 4 cylinder, water cooled diesel engine or equivalent engine
Rated Power	49 hp (36 Kw) at 2000 RPM
STEERING	Full power orbitrol with twin hydraulic double acting cylinders and 40° articulation on either side
Turning Radius	7 mtrs (approx)
TRANSMISSION	Heavy duty TATA synchromesh transmission with 8 forward and 2 reverse speeds and hi-low drive selector for creep speed
	Front axle is rigidly welded on the chassis and rear drive axle is mounted with leaf springs
	Heavy duty hydraulic clutch
Top Speed	32 KMPH on even metaled road (without load)
Gradeability	40% (unladen)
HYDRAULIC SYSTEM	<ul style="list-style-type: none"> ● Gear/Intra Vane type Main Pump ● Three spools control valve with built in Relief valve ● Suction line has 100 mesh size strainer while return line is fitted with 25 micron filter ● Two double acting lift cylinders, two double acting steering cylinders and one double acting extension cylinder
BRAKES	<ul style="list-style-type: none"> ● Dual Circuit Brakes ● Fully air actuated brakes on rear wheels and pneumatically assisted hydraulic brakes are provided on front wheels ● Parking brake is pneumatically operated, fail safe type
ELECTRICAL SYSTEM	12V. Negative earth with 35 amp. Alternator & 75 amp. hr. battery
TELESCOPIC BOOM	Three part slotted boom with hydraulically operated synchronized extensions
TYRES	11.00 x 20 (4 Nos.) 14.00 x 25 (2 Nos.)

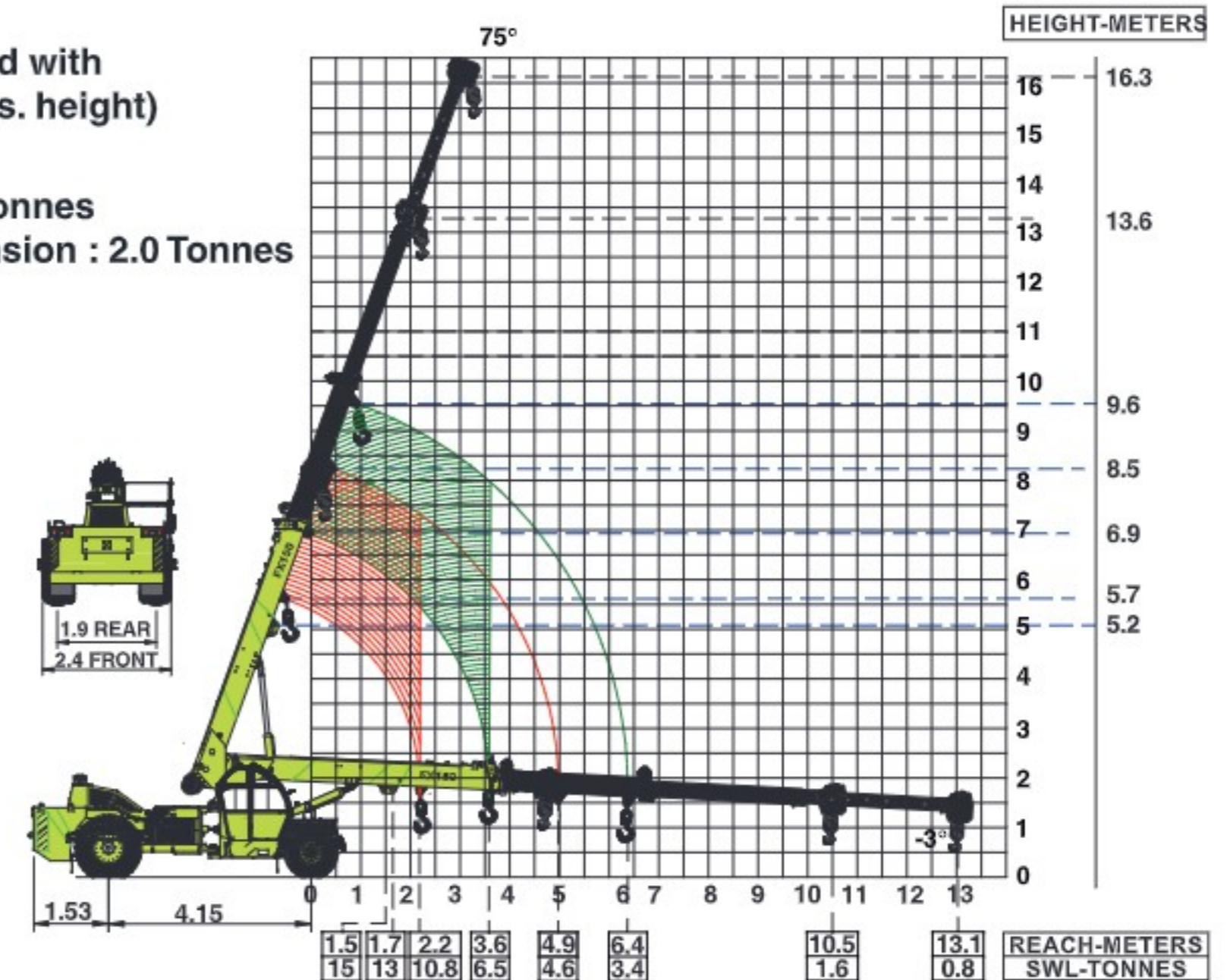
Wheel base	4150 mm
Wheel track	Front 1900 mm Rear 1800 mm
HOIST	Winch is driven by hydraulic motor and fitted with rope tensioner. Hoisting is provided through self adjusting hook block employing 4 falls of 13 mm dia rope
Hoist Speed	50 Mtrs./Min. (Line speed)
BOOM LUFFING	
Range	-3° to + 75°
SAFETY	<ul style="list-style-type: none"> ● Hose failure protection ● Audio over hoisting indication ● Safety brakes on hoist ● Self adjusting hook block ● Front and rear wheel guards
STANDARD EQUIPMENT	<ul style="list-style-type: none"> ● Front mounted fully enclosed wide view cabin ● Rear View Camera ● Front work lights ● Beacon rotating light ● Reflectors & Rear View Mirrors ● Took Kit ● Cabin Fan ● Instrument Cluster : <ol style="list-style-type: none"> a) Water temperature b) Engine oil pressure c) Fuel Gauge d) RPM meter cum hour recorder e) Air Pressure Gauge ● Speedometer
OPTIONAL EQUIPMENT	<ul style="list-style-type: none"> ● Fly jib : 2.7 Mtrs., 1.25 Tonnes Capacity ● Spark arrestor ● Safe load indicator/ LMI ● Over Hoist hydraulic cutoff ● Fire extinguisher ● Front outriggers ● Front and side Proximity Sensors ● Cabin front glass protector ● Helper/Slinger seat ● 4 part slotted boom (16.3 m) ● 4 part slotted boom (18.9 m) ● Variant Model : Tata 74 bhp BSIV Engine
OPERATING WEIGHT	
Total Weight	15220 Kgs.

ACE FX150 Model Crane fitted with 3 part slotted boom (11.2 Mtrs. height)



ACE FX150 Model Crane fitted with 4 part slotted boom (16.3 Mtrs. height) (4th part power extended)

- Max. capacity flyjib : 1.25 tonnes
- Max capacity manual extension : 2.0 Tonnes



Full rated lifting capacity available in articulated / steered condition.

NOTE: • All above specifications are pertaining to FX150 model fitted with 11.2 Mtrs. boom.
• Rated loads are on the basis of operation on firm and level surface.

Full rated lifting capacity available in articulated / steered condition.