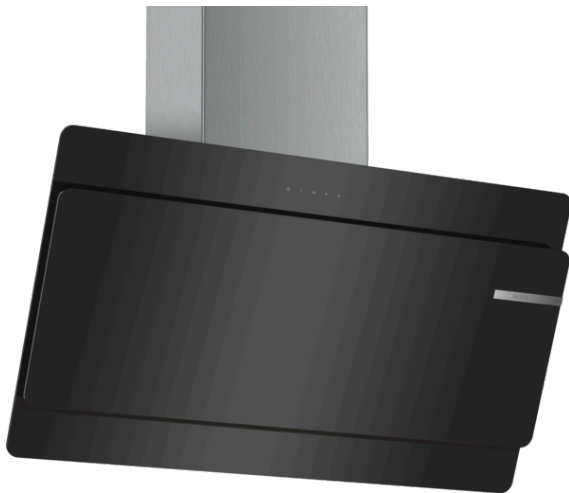


**Serie | 4, Wall mounted hoods, 90 cm,
Black
DWK098G60I**



Black, stylish and sophisticated – this hood exudes robust performance, and adds a contemporary and professional vibe to any kitchen.

- Standard hood that fits seamlessly into all home designs and cooking needs
- **Extraction rate:** Impressive power with 840 qmh ensures effective air extraction.
- **Illumination:** LED lighting is highly energy efficient and provides attractive, white and even lighting for the hob area.
- **Inclined design:** Non-obstructive shape with easy to clean glass surfaces.

Technical Data

Typology :	Chimney
Height of product, without chimney (mm) :	340
Net weight (kg) :	18.548
Type of control :	Electronic
Boost position output recirculating (m3/h) :	395.0
Boost position air extraction (m ³ /h) :	840
Number of lights :	2
Diameter of air outlet (mm) :	120 / 150
Grease filter material :	Washable aluminium
Odour filter :	No
Operating Mode :	Convertible
Optional accessories :	DHZ5466, DHZ5478, DHZ5650
Type of lamps used :	LED
Total power of the lamps (W) :	1
Grease filter type :	Multilayer
Voltage (V) :	230
Frequency (Hz) :	50
Installation typology :	Wall-mounted
Material body :	Glass
Dimensions of the product, with chimney (if exists) (in) :	/ x x
Dimensions of the packed product (in) :	17.51 x 21.96 x 39.44
Net weight (lbs) :	41
Gross weight (lbs) :	51
Motor location :	Integrated motor in hood chimney
No-return airflow flap :	No
Dimensions of the product, with chimney (if exists) (mm) :	500 x 900.0 x 480.0
Dimensions of the packed product (HxWxD) (mm) :	445 x 558 x 1002
Net weight (kg) :	18.548
Gross weight (kg) :	23.0



Serie | 4, Wall mounted hoods, 90 cm, Black DWK098G60I

Black, stylish and sophisticated – this hood exudes robust performance, and adds a contemporary and professional vibe to any kitchen.

Design

- Straight glass and stainless steel chimney for wall mounting
- Black Glass surfaces
- Electronic touch control
- Chromed logo on the screen

Key Functions

- Maximum blower performance: 905 m³/h (freeblowing)
- Noise level from 55 dB to 77 dB
- 4 fan speed settings (three plus intense)

Comfort

- 2 x 2 W LED lighting
- Multi-layer aluminium grease filters

Technical information

- For wall mounting only
- Suitable for ducted or recirculating operation only
- Dimensions of the product, with chimney (if exists)
(HxWxD mm): 500 x 900 x 480
- Minimum clearance to gas/electric cook top: 750 mm
- Length electrical supply cord: 150 cm
- Ducting connection: 150mm/120mm diameter

** In accordance with the EU-Regulation No 65/2014*