



# Technical Specifications



Models		KCG60LW	KCG50LW	KCG40LW/H
Color		White	White	- W (white), - H (charcoal gray)
Humidifying	Humidifying system	Natural vaporization	Natural vaporization	Natural vaporization
	Tank capacity	3.0 L	2.5 L	2.5 L
	Humidifying capacity <sup>*2</sup>	630 mL/hour	450 mL/hour	400 mL/hour
Recommended area	Air purifying <sup>*1</sup>	50 m <sup>2</sup>	38 m <sup>2</sup>	28 m <sup>2</sup>
	Humidifying <sup>*2</sup>	30 m <sup>2</sup>	21 m <sup>2</sup>	18 m <sup>2</sup>
Recommended area for high-density Plasmacluster ions <sup>*3</sup>		35 m <sup>2</sup>	28 m <sup>2</sup>	21 m <sup>2</sup>
Operation modes		Max / Med / Low / Pollen / Sleep	Max / Med / Low / Pollen / Sleep	Max / Med / Low / Pollen / Sleep
Voltage/frequency (V, Hz)		220-240, 50-60	220-240, 50-60	220-240, 50-60
Power input (W) (Max / Med / Low)	Without humidifying	72 / 38 / 5.0	53 / 26 / 5.0	31 / 12 / 5.0
	With humidifying	55 / 40 / 6.5	33 / 14 / 6.5	24 / 14 / 6.5
Standby power (W)		1.2	1.2	1.2
Inverter operation		Yes	Yes	Yes
Airflow (Max / Med / Low) (m <sup>3</sup> /hour)	Without humidifying	408 / 240 / 72	306 / 180 / 60	240 / 120 / 60
	With humidifying	342 / 240 / 72	240 / 120 / 60	210 / 120 / 60
Noise level (Max / Med / Low) (dB)	Without humidifying	53 / 48 / 24	52 / 47 / 19	46 / 41 / 19
	With humidifying	49 / 48 / 24	46 / 40 / 20	43 / 40 / 20
Special program mode		Intelligent, Haze (E) / Anti-dust (Y) / Clean ion shower (TA) / Sand (SA)	Intelligent, Haze (E) / Anti-dust (Y) / Clean ion shower (TA) / Sand (SA)	Auto, Haze (E) / Anti-dust (Y) / Clean ion shower (TA) / Sand (SA)
Auto restart		Yes <sup>*4</sup>	Yes <sup>*4</sup>	Yes <sup>*4</sup>
Child lock		Yes <sup>*5</sup>	Yes <sup>*5</sup>	Yes <sup>*5</sup>
Timer		Yes (on / off)	Yes (on / off)	Yes (on / off)
Filter type	Dust collection	HEPA <sup>*6</sup>	HEPA <sup>*6</sup>	HEPA <sup>*6</sup>
	Deodorization	Double deodorization	Double deodorization	Double deodorization
	Pre-filter	fine-meshed	fine-meshed	fine-meshed
	Humidifying	Yes	Yes	Yes
Filter life	Dust collection	Up to 10 years <sup>*7</sup>	Up to 10 years <sup>*7</sup>	Up to 10 years <sup>*7</sup>
	Deodorizing filter	Up to 10 years <sup>*7</sup>	Up to 10 years <sup>*7</sup>	Up to 10 years <sup>*7</sup>
	Humidifying filter	Up to 10 years	Up to 10 years	Up to 10 years
Sensor	Odor	Yes	Yes	No
	Dust	Yes	Yes	Yes
	Temperature and humidity	Yes	Yes	Yes
	Light	Yes	Yes	Yes
	Motion	Yes	Yes	No
Clean sign indicator		Yes (7 steps)	Yes (7 steps)	Yes (7 steps)
Light control button		Yes (bright / dim / off)	Yes (bright / dim / off)	Yes (bright / dim / off)
Dimensions (W x H x D) (mm)		370 x 660 x 293	345 x 631 x 262	345 x 631 x 262
Net weight (kg)		10.5	9.2	9.2
Replacement filter	HEPA filter	FZD60HFE	FZD40HFE	FZD40HFE
	Deodorizing filter	FZG60DFE	FZG40DFE	FZG40DFE
	Humidifying filter	FZG60MFE	FZG60MFE	FZG60MFE
Replacement unit		—	—	—

Plasmacluster ion purification	Airborne microbes	Airborne mold	Airborne microbes	Airborne viruses	Dust mite allergens	Dust mite feces allergens	Ammonia odor
	Clinging odors	Cigarette odor	Body odor				
Filter purification	Capture and reduction of growth	Airborne microbes	Viruses	Tree pollen	Dust mite remains	Dust mite feces	
	Deodorizing	Cigarette odor	Pet odor	Body odor	Mold odor	Ammonia odor	Cooking odor
	Capture	Airborne mold	Plant pollen	Tree pollen	Pet dander	Pet hair	Dust

<sup>\*1</sup> Recommended room size: Measured based on the JEM1467 standard of the Japan Electrical Manufacturers' Association. <sup>\*2</sup> Measurement conditions: 20°C, 30% humidity (JEM1426) <sup>\*3</sup> Size of a room in which approximately 7,000 ions can be measured per cm<sup>3</sup> in the center of the room (at a height of approximately 1.2 meters from the floor) when the product is placed next to a wall and operated at the maximum operation position. <sup>\*4</sup> The air purifier automatically resumes operation when power returns, even after a sudden power interruption, such as due to a circuit breaker. <sup>\*5</sup> By pressing the Child Lock button for more than three seconds, the operation buttons are locked to help prevent inadvertent operation by children or pets. <sup>\*6</sup> HEPA is defined by the JEM1467 standard of the Japan Electrical Manufacturers' Association Standard. The filter removes more than 99.97% of 0.3-micron dust particles. <sup>\*7</sup> At a smoking rate of five cigarettes per day. <sup>\*8</sup> Volatile organic compound (VOC), Nitrous oxides (NOx), Sulfur oxides (SOx). The effectiveness of reducing three volatile organic compounds (formaldehyde, toluene, and ethyl acetate) was tested by Sharp. <sup>\*9</sup> Toluene, Ethylbenzene, xylene etc. The deodorizing performance for a single component odors substance in a 1m<sup>3</sup> test container may be different than the deodorizing performance in actual use.

<sup>\*</sup> The number in this technology mark indicates the approximate number of ions supplied into 1 cm<sup>3</sup> of air, which is measured around the center of a room (at a height of 1.2 m above the floor) with the applicable floor area at the maximum airflow, when a Plasmacluster ion generator using a high-density Plasmacluster ion-generating device is placed close to a wall.

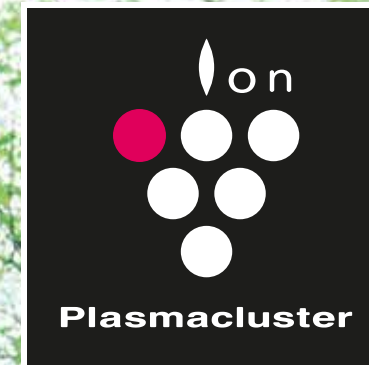
- The filter itself may produce an odor and need to be replaced after several months if the air purifier is used to reduce strong odors, such as cigarette smoke or grilled meat. ● Use the air purifier in combination with room ventilation if it is used for strong odors. ● Not all harmful substances in cigarette smoke (e.g., carbon monoxide) can be removed. ● Not all commonly occurring odors (e.g., pet odors) can be removed. ● Heat from air drawn in is lost when water evaporates from the humidifier filter, so the temperature of the outgoing airflow is lower than the room temperature. ● Use tap water to fill the water tank.

Design and specifications are current as of July, 2017, but are subject to change without prior notice. Actual colors may differ slightly from the colors shown in this brochure.

# SHARP

## AIR PURIFIER 2017

### Be Original.



# Naturally Fresh and Safe Air



SHARP-ROXY SALES & SERVICE COMPANY (M) SDN.BHD. (8394-W)  
No.1A, Persiaran Kuala Langat, Section 27,  
40400 Shah Alam, Selangor Darul Ehsan.  
www.sharp.com.my Email:productinfo@my.sharp-world.com

Product Enquiry: Tel: 03-5102 5369  
Service Enquiry: Tel: 1800 888 678 (Toll Free)  
Fax: 03-5102 5329  
SharpMalaysia

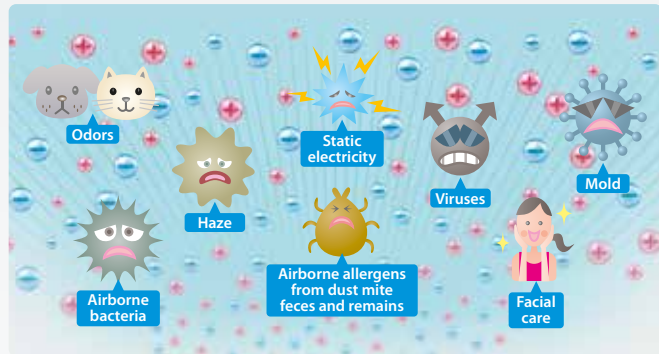




# Plasmacluster Air Purifier Three-step Dust Collection System

## 1 REMOVE

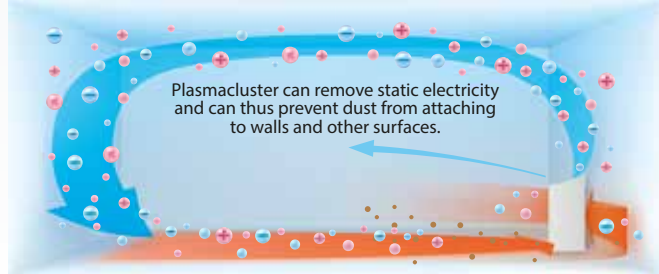
Plasmacluster Ions Can Remove Mold\*1, Viruses\*2, Allergens\*3, Odors\*4, and Static Electricity



## 2 COLLECT

Powerful Air Suction and Unique Airflow Quickly and Efficiently Collect Dust and Other Particles

Faster airflow at a 20° angle collects dust at lower levels in the room for more effective cleaning.



## 3 Three Filters Reliably Capture Dust, Gas, and Odors.

### Electrostatic HEPA filter

Traps 99.97% of microscopic particles (as small as 0.3 micron) in the air.

10.0µm

Allergens & Microscopic dust

PM2.5

### Double Deodorizing filter

Absorbs cigarette odor, harmful gases in HAZE\*5 and many other common household odors.

Harmful Gases

- VOC (volatile organic compounds)
- NOx (nitrous oxides)
- SOx (sulfur oxides)

Cigarette odor/General odor in house/ Harmful gases in HAZE.\*5

### New Pre-filter

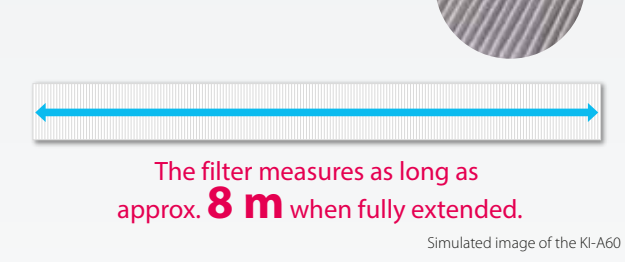
Captures larger than approx. 240 micron dust particles, washable.

240µm

Pet hair/Large dust particle

## HEPA Filter\*6

**Enlargement of HEPA Filter\*6**  
The larger the surface area of the filter, the more dust and other harmful particles are captured.



## What the HEPA Filter\*6 Captures

**99.97%\*7 capture and removal of 0.3-micron dust particles**

- Tree pollen**: Cedar, cypress, birch, alder, beech, red cedar, oak, pine
- Grass pollen**: Ragweed, wormwood, hop, orchard grass, vernal grass, timothy grass
- Allergens**: Dust mite feces, dust mite remains, dog dander, cat dander, hamster dander, mold
- Viruses**
- Airborne microbes**
- Airborne mold**: Black mold, Stachybotrys, Aspergillus niger, Penicillium
- Dust**: Dust, pet hair, pet dander, cigarette smoke, cooking fumes, mite dust, diesel exhaust particles, Asian dust
- Odors**: Cigarette odor, pet odor, cooking odor, kitchen food waste odor, toilet odor, body odor, mold odor, ammonia odor

\*1 99% of airborne mold was removed in a test space of 31 m<sup>3</sup> after 195 min. of use. (tested by Ishikawa Health Services Association)  
 \*2 99% of airborne viruses were removed in a closed test space of 25 m<sup>3</sup> after 18 min. of use. (tested by Pasteur Institute, Ho Chi Minh City)  
 \*3 Effectiveness in a test space of 31 m<sup>3</sup> after four weeks of use (one day: 24 hours). (tested by Hiroshima University Graduate School of Advanced Sciences of Matter)  
 \*4 Effectiveness in a test space of 41 m<sup>3</sup> after 80 min. of use. The effectiveness depends on the odor type, odor intensity, and material of object measured. (tested by Sharp)  
 \*5 Toluene, Ethylbenzene, xylene etc. The deodorizing performance for a single component odors substance in a 1m<sup>3</sup> test container may be different than the deodorizing performance in actual use.  
 \*6 The filter captures more than 99.97% of 0.3-micron dust particles.  
 \*7 This value applies to filter removal performance, not to removal for the entire room.

**Dust removing and deodorizing performance of air purifiers**

- Not all harmful substances in cigarette smoke, e.g., carbon monoxide, can be removed.
- Not all commonly occurring odors, e.g., building material odors and pet odors, can be removed.

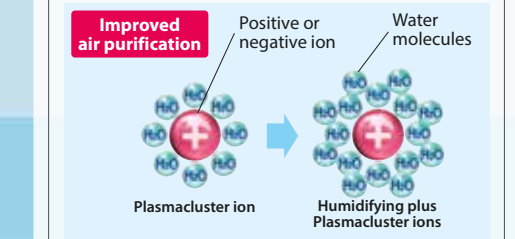
\* The filter itself may produce an odor and need to be replaced after several months if the air purifier is used to reduce strong odors, such as cigarette smoke or grilled meat. Use the air purifier in combination with room ventilation if it is used for strong odors.

# Automatically Rotating Humidifying Structure Creates Clean Humidity Conditions

## Comfortable Humidity Indoors Keeps Your Skin and Throat Moisturized and Healthy

Minute water molecules from moisture delivered by vapor humidifying prevent nose and throat dryness.

## Humidifying doubles the Plasmacluster ion endurance and air purifying speed.\*



\* Tested by Japan Food Research Laboratories. Test method: Plasmacluster ions were discharged into a test chamber with a floor area of about 8 m<sup>2</sup>; airborne mold was measured with an air sampler, and the approximate values for the condition with humidifying and the condition without humidifying were compared.

Water molecule Approx. 0.4 nm

Vapor water molecule (steam) 3,000 to 15,000 nm

Plasmacluster ion Approx. 2 to 9 nm

**Rotating humidifying mechanism structure**

When humidifying is not performed, the filter disc rotation stops and remains free of water immersion and dries with ventilation, thus keeping the filter disc clean and preventing mold growth.

**Anti-microbial\*1, anti-mold\*2, humidifying filter**

**No need of replacement for 10 years\*3**

\*3 Time for the humidifying performance to decrease by 50% relative to the rated humidifying performance assuming eight hours of operation per day. The filter service life depends on the room conditions and usage. Periodic cleaning is required.

Simulated image

## Intelligent Mode with 7 Types of Detection in Effect (KC-G60/G50)

Once you press the button, everything operates automatically. Humidifying and air purification are controlled according to the impurities, odors, temperature, and humidity of the air in the room. Also, a motion sensor detects whether people are present, working in coordination with a light sensor to automatically switch to energy-saving operation.

## 7 DETECTION INTELLIGENT AUTOMATIC OPERATION

INTELLIGENT MODE

- PM2.5
- USUAL DUST
- ODOR (KC-G60/G50)
- TEMPERATURE
- HUMIDITY
- LIGHT
- MOTION (KC-G60/G50)

## Simple Operation for Easy Everyday Use

### Plasmacluster Spot Mode

A high-density concentration of Plasmacluster ions are discharged forward. This is effective in removing odors, bacteria, and viruses clinging in remote areas of the room.

**Ion density**

Approx. **10 times** or higher

(compared with airflow at the Medium setting)

### Effect of Plasmacluster Spot Mode Deodorization and Bacteria Removal

Removal of Clinging Odors					Removal of clinging bacteria
Cigarette odor	Pet odor	Odor of wet clothes drying indoors	Sweat odor	Cooking odor	Clinging bacteria
Approx. 30 minutes	Approx. 6 hours	Approx. 3 hours	Approx. 6 hours	Approx. 2 hours	Approx. 8 hours

\* Effect after the above times at a position approx. 70 cm from the floor and 50 cm from the front discharge outlet.

### Approved by the British Allergy Foundation

The British Allergy Foundation has tested KI, KC, and FU-series Sharp Plasmacluster air purifiers and verified that airborne allergens including dust mite feces and remains, as well as pollen, are removed.



\*1 Tested by the Boken Quality Evaluation Institute. Test method: JIX Z2801 standard test. Anti-microbial method: Infusing filter with anti-bacterial agents. Test result: 99% removal.  
 \*2 Tested by the Boken Quality Evaluation Institute. Test method: Mold resistance test according to the JIS Z 2911 standard. Mold prevention method: Infusing filter with anti-mold agents. Test result: No mold growth.  
 \* The number in this technology mark indicates the approximate number of ions supplied into 1 cm<sup>3</sup> of air, which is measured around the center of a room (at a height of 1.2 m above the floor) with the applicable floor area at the maximum airflow, when a Plasmacluster ion-generating device is placed close to a wall.